

INVENTIONLAND®
EDUCATION



Innovation Labs® Products and Services Catalog





We want to
make an
impact in
education.

Table of Contents

Welcome

- 06 About Inventionland Education
- 08 Meet George Davison (**founder and CEO**)

Curriculum

- 12 Introduction to Innovation Curriculum and Courseware
- 14 STEM/STEAM for K-12
- 16 Our 9-Step Method
- 20 ABCs of Storytelling
- 23 3, 2, 1 Production!
- 25 Maker Technology
- 28 Learning for the 21st Century

Professional Development

- 32 Introduction to Professional Development
- 34 Taking Professional Development to New Heights

Teacher Resources

- 38 Introduction to Teacher Resources
- 40 Resources and Manipulatives Details

Invention Contests

- 44 Introduction to Invention Contests
- 46 Contest Types and Descriptions

Lab Design Services

- 50 Introduction to Innovation Labs® Design Services
- 52 Transform your Classroom (**the process**)
- 54 Witness the Transformation (**before-and-after examples**)
- 57 Innovation Delivered.® (**awards and recognition**)

Spaces to Innovate

- 60 Large Spaces
- 62 Informal Spaces
- 64 Emerging Spaces

Themed Centerpieces

- 68 Inventalot™ Castle
- 70 Chipper's™ Treehouse
- 72 Discovery™ Pirate Ship
- 74 Inventron™ Robot
- 76 Storybook Forest™
- 78 Bright Ideaz™ Dry-Erase Light Panels

Walls, Halls, Entryways and Accents

82-84	Digital Wall Art
85-87	Creative Power Wall Art
88-91	Space Wall Art
92-95	Shipwreck Wall Art
96,97	Inventionland® Wall Art
98	Inventionland® Trees (entryway)
99	Inventalot™ Castle (entryway)
100	Castle Knights (accents)
101	Dancing Robots (accents)
102	Tiki Tech Bar
103	Robot Tech Bar
104	Creativity Cabin Locker Cubby
105	Custom Artwork

Innovation Labs® Starter Kits

110-125	Mini and Deluxe Starter Kits
---------	------------------------------

Post-Hiders, Corners and Clouds

128	Inventionland® Tree Pillar Wrap (with seating)
130	Inventionland® Wall Tree (against wall)
132	Inventionland® Corner Tree (inside and out)
134	Island Palm Tree (against wall)
136	Ceiling Clouds (hanging / 3 sizes)
138	Dry-Erase Light Panel (2-sided)
140	Dry-Erase Light Panel (1-sided)
142	“Inventing” Light Panel (2-sided)
144	“Making” Light Panel (2-sided)
146	“Storytelling” Light Panel (2-sided)

Get Started and Tours / Field Trips

148	Our Promise to You (how to get started)
150	Tour Details

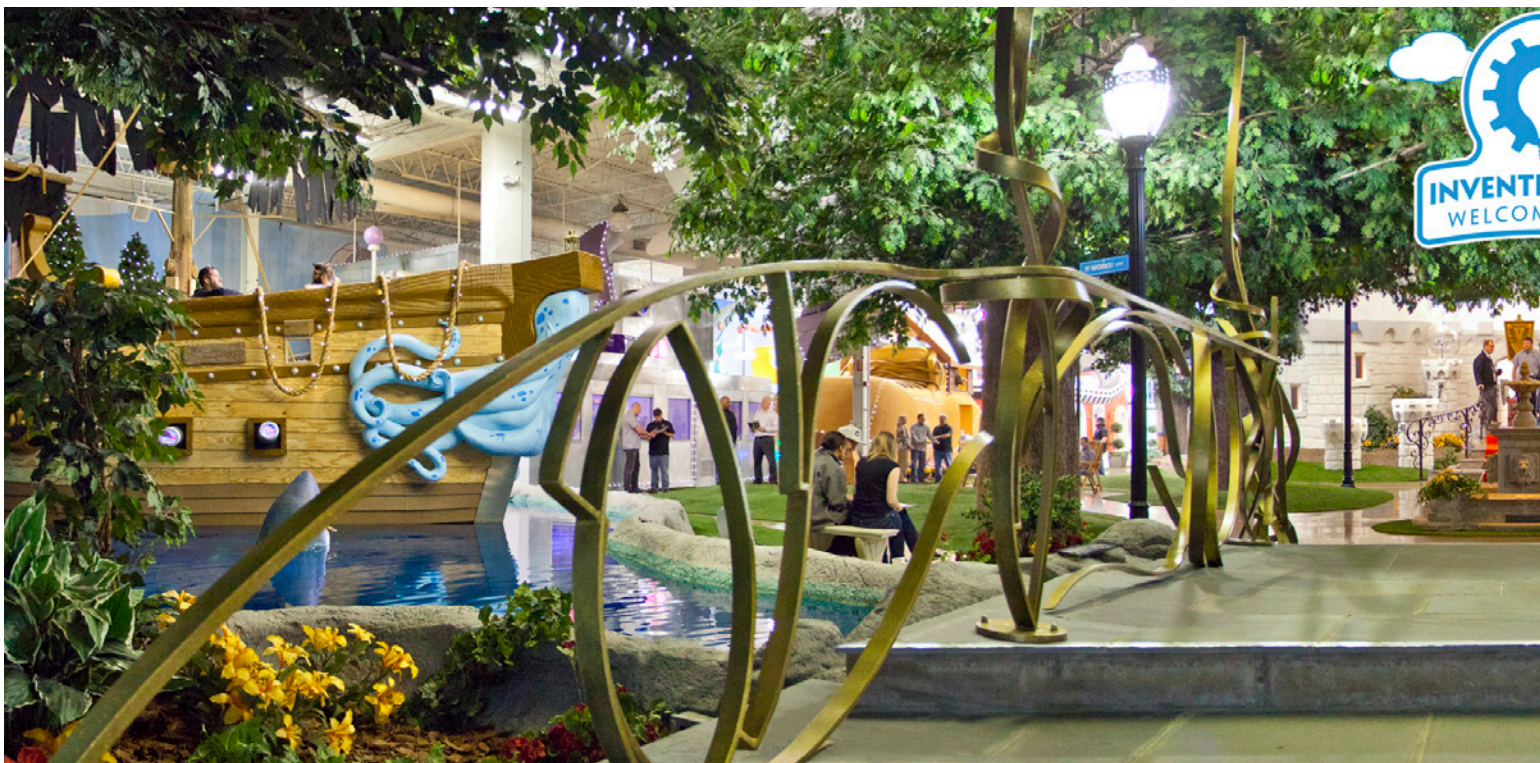
Specifications and Warranty

152	Specifications Exhibit
153	Inventionland® Warranty



Follow us on social media

About Inventionland® Education



At Inventionland® Education, we believe the world is full of **incredibly creative, intelligent, and innovative people...** even if some of them don't know it yet.

Every person is born with the potential to be brilliant; they just need the right tools to succeed. While people may be naturally creative, the method of how innovation occurs must be taught. That's what we strive to do here every single day.

Inventionland began as a for-hire innovation company and we're now the world's largest private invention factory. Over the years, hundreds of our original products have gone to market, each one using the 9-Step Method found in our courseware.



As a product development company, we've driven new products to the market to be sold by countless major retailers such as Amazon, Target and Walmart, just to name a few. We established Inventionland Education by creating a curriculum for schools across the country that reflects real-world experience in the field of innovation. Our goal is to prepare people for a life of innovation in entrepreneurship, corporations and government institutions as better ideas are discovered and put to use in the real world. Our students become skilled in how to use their mind and hands in collaborative environments so they can help to lead conversations on how to make things better.



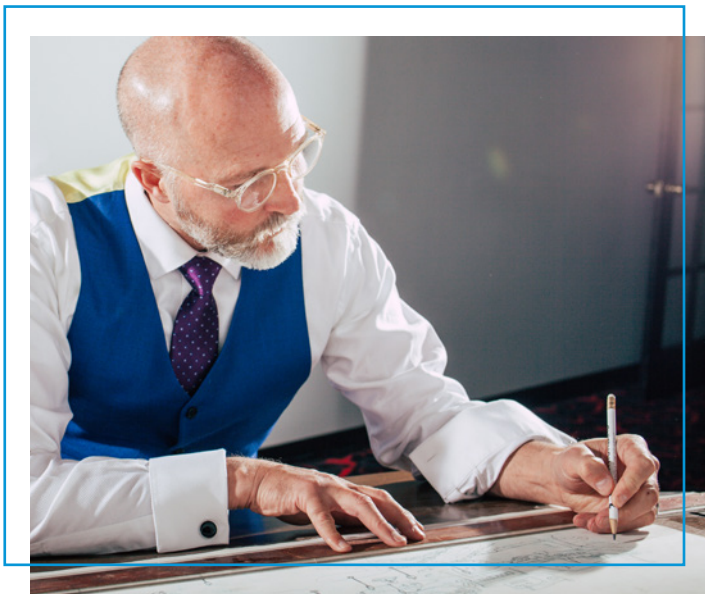
Meet George Davison

Founder & CEO of Inventionland®

George, like anyone who eventually succeeds, had to fail his way forward. In doing so, he created an idea-to-market process that our courseware describes as the 9-Step Method.



In 2006, George designed and created Inventionland, an immersive work environment where his creative team found inspiration as they designed products of the future. Occupying more than 60,000 square feet, Inventionland consists of 16 themed sets, which include the pirate ship “Discovery,” a giant robot, and a fully functional race track.



In 2015, Davison’s community outreach activity expanded to the educational sphere as he began to develop coursework preparing young innovators with STEM (science, technology, engineering and math) skills. Inventionland’s curricula have been adopted by schools across the country, helping to inspire

the next generation of creative entrepreneurs.



Today, George hosts an Emmy nominated television show called Tomorrow's World Today on the Discovery Channel and the Science Channel. It features stories from corporate and government innovation labs showing the products and jobs of the future.

George used his 30-plus years of real-world experience in innovation to create a course that helps students to flourish in the world of tomorrow.

- Host of the Emmy-nominated TV show featured on the Discovery and Science Channels called "Tomorrow's World Today."
- Designed an Innovation Lab® that won the first-ever Edison Award in education and was featured in the *Wall Street Journal*.
- Host of "The Innovators" podcast designed for high school audiences, where he interviews executives in government and business about what they did in their youth to become successful.
- Holder of over 40 patents and trademarks, his innovations have been in thousands of retail and online stores for over 30 years.
- Author of several books including *The Adventures of Chipper Cloud*, *The World's First Inventionland*, and *The Inventsons* comic books.
- Keynote speaker for Carnegie Mellon University and other institutions.
- Designed and built Inventionland, recognized globally as the world's most creative workplace.

Curriculum





BagStation
Stores and stores
Plastic Grocery Bags

Use Anywhere

- Kitchen
- Entry
- Garage
- Workshop
- Center
- Bar

Photo of Product in Use

AT COMPAN
ED HERE

Innovation Curriculum & Courseware

Inventionland Education is powered by our more than 30-year history of creating innovative solutions for industry and helping corporations turn ideas into actual products. Our student-directed curriculum follows a real-world proven 9-Step Method that takes student ideas from concept to working model to the business pitch.

Teachers can easily use the curriculum in an in-class or remote environment and they don't need to have previous innovation experience. All that's needed is an inquiring mind, observational skills, and a desire to help students prepare for the jobs of the future.

Our courses are designed for cross-disciplinary, interactive learning to inspire and build confidence in students from diverse backgrounds and abilities. They are aligned to state and national standards and are highly flexible to meet various grades, schedules, and delivery models. We offer support for teachers with professional development, email and live chat.

Students often see problems in need of better solutions. The challenge for them is learning how to navigate from observation of the problem to configuring a solution that works and communicates to others. This skill is widely sought after in today's working world.



**One of the core passions
of Inventionland Education
is to give everyone the
opportunity to reach their
full potential.**



Our Innovation Curriculum and Courseware for K-12 are the perfect cross-discipline STEM/STEAM toolbox.

With Inventionland's real-world 9-Step Method, its innovative professional development program, and live customer support, educators now have the tools to feel confident about preparing the innovators and inventors of the future.

Elementary School

At the K-5 grade level, educators will be able to:

- Deliver teacher-directed, developmentally appropriate lessons and activities
- Easily customize lesson plans and activities based on classroom interests and supplies available
- Align each lesson plan and activity to real-world careers
- Introduce and practice the inquiry process as well as observation and presentation skills, using Inventionland's proprietary 9-Step Method
- Tap into young students' natural instinct to tinker and solve problems
- Keep students encouraged with the help of Chipper Cloud, our courseware mascot

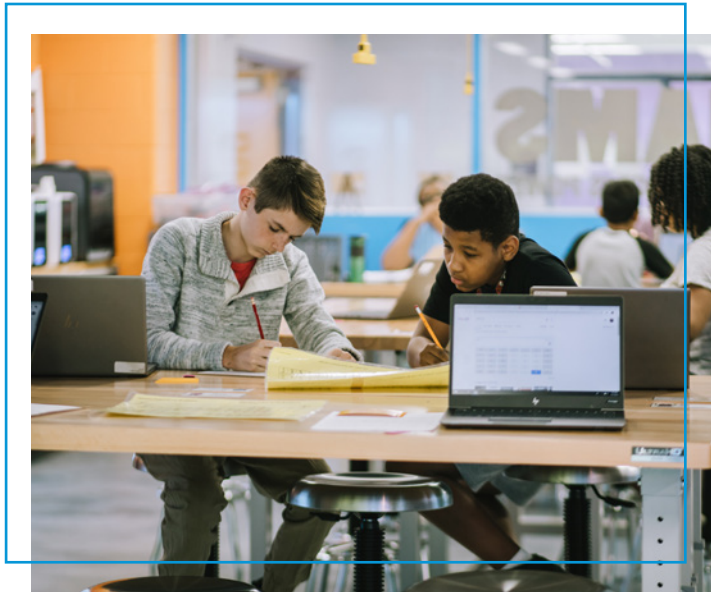


Start by starting to make something small, better.

Middle school

At the 6-8 grade level, educators will be able to:

- Easily flex between teacher-directed and self-directed lessons depending on student and class needs
- Easily customize lesson plans and activities based on individual or small group interests
- Follow the same 9-Step Method with multiple simultaneous project teams
- Prepare students for the real world with a focus on career readiness
- Deliver the course as core curriculum, an elective, or a club activity

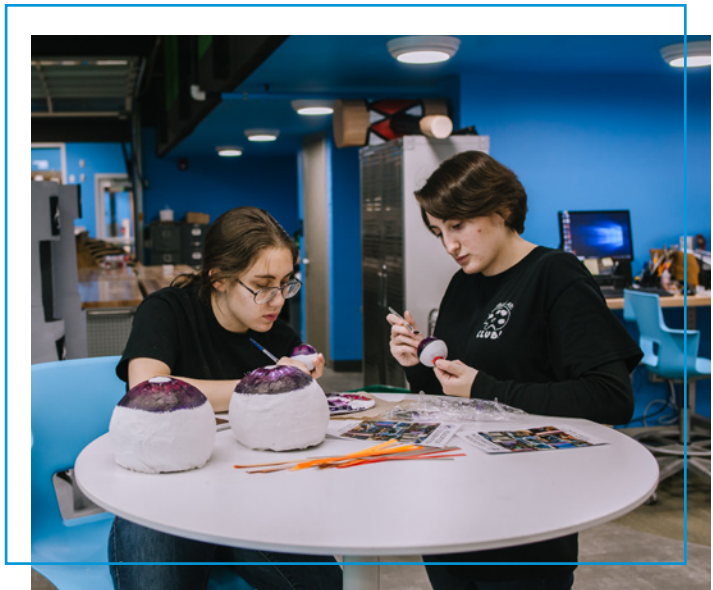


A fun, hands-on approach to inspire creativity, teamwork and a growth mindset in both in-class and remote learning environments.

High School

At the 9-12 grade level, educators will be able to:

- Deliver the courseware as self-directed lessons and easily switch back to teacher-directed as needed
- Easily customize lesson plans and activities based on individual or class interests
- Follow the same 9-Step Method with multiple simultaneous project teams
- Prepare students for the real world with a focus on career readiness
- Deliver the course as core curriculum, an elective, or a club activity
- Deliver the curriculum within the instructional core over a semester or academic year



Inventionland's proven, real-world 9-Step Method guides students through the product innovation journey.

At the core of this unique curriculum is our proprietary 9-Step Method based on the fundamentals of real-world inventing. Students use this process to develop their idea into a fully formed product, learning and applying key STEM/STEAM and career skills along the way.

Our 9-Step Method

By the end of the 9-Step Method, students will not only understand how to bring ideas to market but will also have gained confidence in their own abilities. They will have developed new skills that will be valuable to them well beyond the classroom and into their adult lives.

Inventing

In the first three steps of our 9-Step Method, students find a problem and create an invention to solve it. As they invent, students learn many skills including how to conduct research, follow precisely a multistep procedure, reason abstractly and quantitatively, model with mathematics, and employ the design process to solve analysis and design problems.



Create & Protect

Much like a real-life business scenario, inventors must first define the core problem and their proposed invention. Students will even sign the appropriate documentation to maintain confidentiality between the involved parties/teammates.



Research Your Idea

Students will conduct a thorough patent and product search. If there is a similar product on the market, the team considers how that product can be improved upon. The students also research target corporations to gear their pitch towards.



Brainstorm

Students are encouraged to find as many ways to solve their problem as possible. In this step, they'll create a few rough sketches of their potential invention to find the most efficient design.



Making

In steps 4, 5 and 6, students actively work on modeling and engineering their solution to the problem. As they do so, students learn how to make inferences and justify conclusions from sample surveys, experiments, and observational studies. They also learn how to apply geometric and density concepts in modeling situations and how to compare and contrast the information gained from experiments, simulations, video, or multimedia sources.



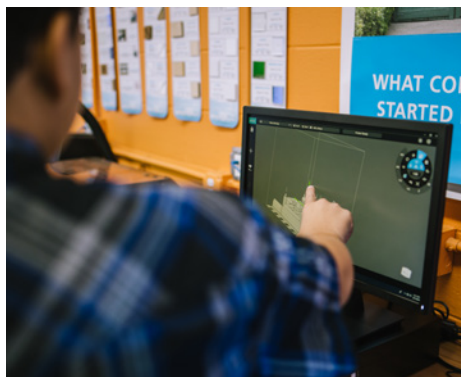
Sketch

At this stage, students will create a final sketch of their design. They are encouraged to use vivid colors, white space, and text to make their design look both exciting and appealing to consumers.



Model

Students will create a concept model or mockup of their product. This gives them an idea of what the product will look like and how it will work. Though it mainly involves hot glue and cardboard, this step will help the group spot potential design flaws and allow them to anticipate their engineering needs.



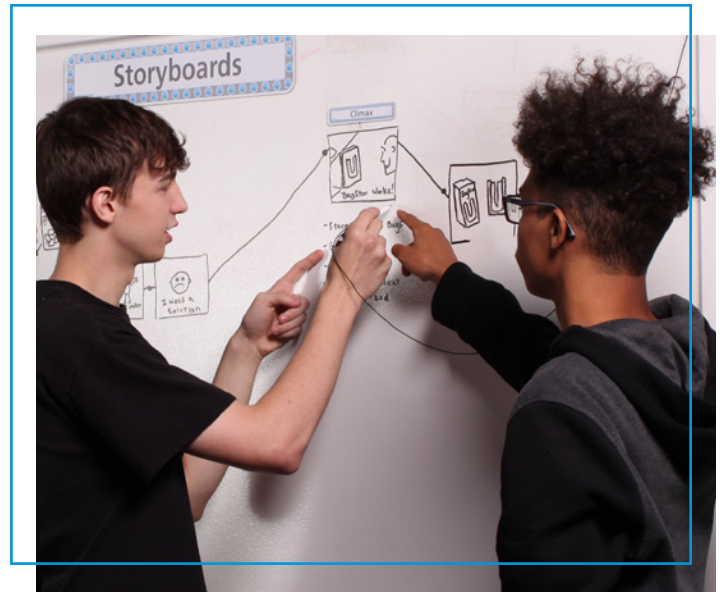
Draft

In this step, students will actually engineer the parts necessary for their inventions. This involves patience, efficient use of materials and learning the specific processes behind building parts.



Storytelling

In the final three steps of our 9-Step Method, students focus on communicating the benefits of their solution from package design to pitching the invention. In these final steps, students will gain experience designing, proposing, and evaluating artistic ideas, writing informative/explanatory texts, and planning and presenting a narrative.



Package

Students will design the packages that will hold their products. This step involves learning how graphic design and secure packaging must work together.



Communicate

This step emphasizes the importance of the visual appeal of the product. Students focus on the more creative aspects of package design, such as incorporating fonts and colors that will appeal to their target market.

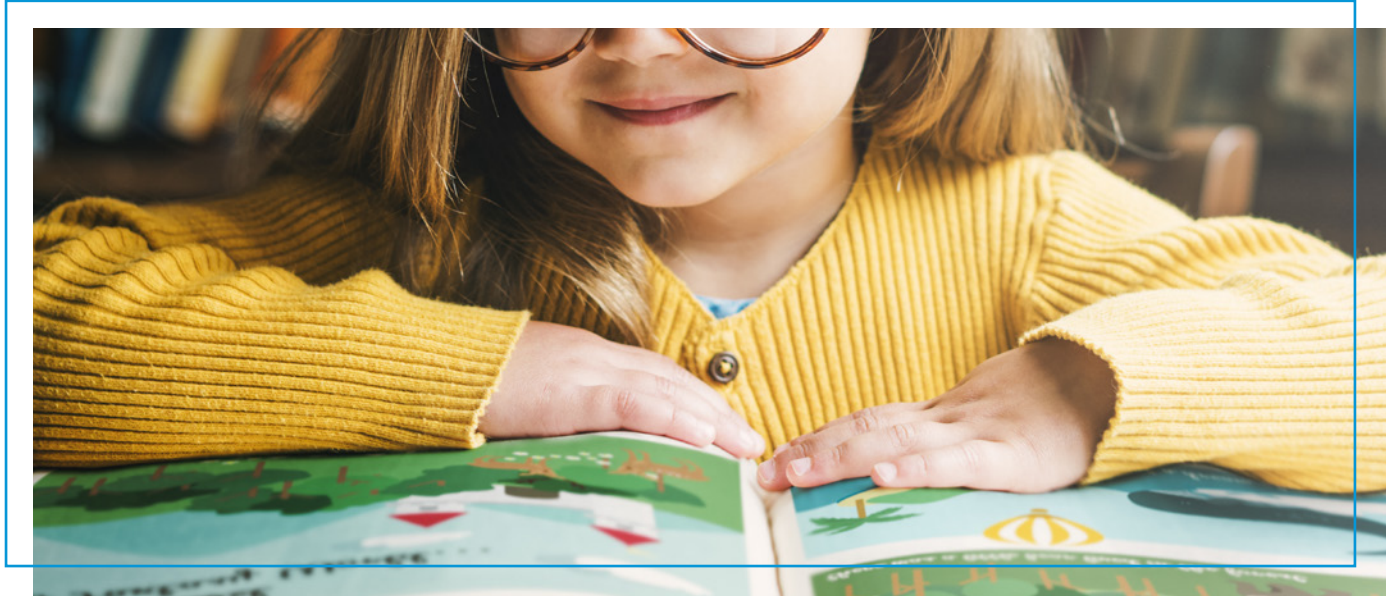


Put It All Together

Students complete the working model of their product. Now we have a prototype that can be used in a business pitch!



ABCs of Storytelling



A story is a POWERFUL thing!! Stories are used everywhere to motivate people to take action or make changes. Politicians use stories to convince people to vote for them and give them money. News organizations use stories to inform people of important events. Businesses use stories to try to make consumers want to use their products or services.

Telling a good story isn't easy, but it can be a lot of fun! Before you can tell a story, you first have to know what a story is. In the same way that all words are made up of letters, all stories are made up of some basic elements.



A. Setting

Every story takes place somewhere. So, before you start telling WHAT happened and WHOM it happened to, stop and think about WHERE your story takes place and WHEN. When your story makes someone “feel like they are there,” it becomes more personal and powerful. This step takes you through the wonderful world of establishing your SETTING.



B. Character

Characters drive stories! Think about your favorite book, movie, or TV show. What do you like about it? Chances are, you're thinking of the characters! In a good story, characters become real to the audience. The audience bonds with them and feels what they feel. In this step you will learn how to define your own characters and how they affect the story they're in.



C. Conflict & Resolution

Every story needs conflict. Without it, there's no reason to tell the story. Conflict is the challenge that characters go through and resolution is how that conflict ends. Conflict and resolution are what happens when the characters want something and must overcome obstacles to get it. It's that struggle to overcome that makes a story interesting. This step introduces the concepts of conflict and resolution and why you need them in your story.



D. Plot

The plot is the framework that holds the story together and keeps everything in its proper place. It's like the bread of a sandwich. You could have a pile of ingredients in front of you, but it's not a “story sandwich” until your “peanut butter setting,” “characters jelly,” and “conflict/resolution sliced banana” are all spread between two fresh baked slices of warm “plot bread”!



E. Telling Your Story

Now that you know what goes into a good story, how do you use that in your presentation? This step explains how a great story becomes a great presentation.



F. Presentation Pointers

Giving a presentation can be scary. There are always so many questions you have going in. Fortunately, there's no reason to fear. All those questions and more get answered in this section. Follow this guide and be confident and your presentation will be great!



G. Class Presentations

The time is now! You will combine all the lessons that you have learned in this section in order to present your product to the judges. Whether your judges are teachers in your school or professionals from local businesses, you now know how to prepare well and make an excellent, professional impression.

Next you will learn how to produce your video and/or slideshow presentation pitch for the invention contest.

3, 2, 1 Production!



Creating videos and slideshow presentations can be a lot of fun, but it requires a lot of work if you want to do it well. In this module, we count down the points that you should know in order to make an amazing, professional quality video. Even though we're going to show you the things that professionals do, you don't have to be a professional in order to do them! Most of these things can be done with just a video camera, or the camera on a cell phone, and a computer.



1. Script-Storming

You will brainstorm ideas on how to market your product, select the best ones, and turn them into a written script with accompanying visuals for an advertisement.



2. Pre-Production

You will develop a storyboard: aligning text with visuals and breaking down how to record the shots needed. That will make the video shoot smooth and efficient. You will scout and secure recording locations and assemble any additional people (for example, actors or a spokesperson) needed for the video.



3. Production

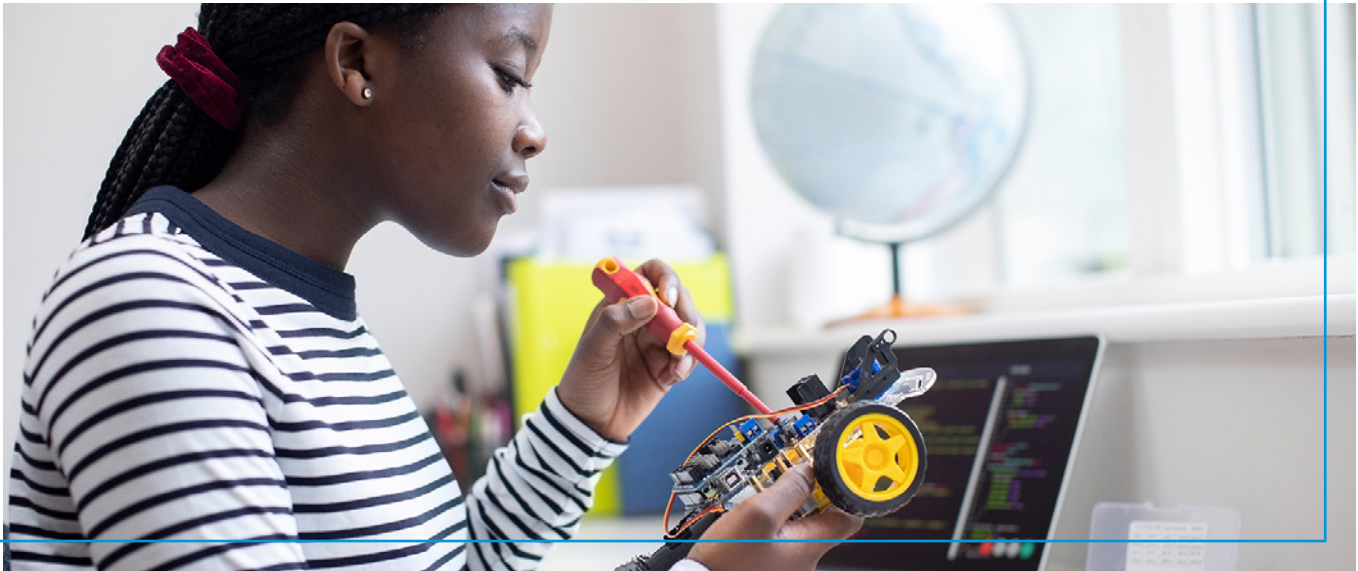
Using lights, camera, and audio equipment, you will bring your script to life through video production.



4. Post-Production

This is the step where you go through your video footage and edit the best pieces together to create a finished advertisement. You may also add a narrator's voice track or music background to make the story as dynamic and compelling as possible.

Maker Technology



“Maker Technology” has swept through the educational world over the last decade. Spaces once dedicated to libraries and study halls have been converted into modern high-tech Innovation Labs®. Classrooms have been invaded by 3D printers and vinyl cutters. Teachers all over the world have found themselves trying to curate expansive stores of maker supplies, kits and other paraphernalia.

While all this can be fun and exciting, in many schools, teachers have little background with the new devices they’re expected to use. The pressure to integrate new technology into their existing classes can seem daunting or intimidating, especially for those who don’t really know what “maker technology” means.



1. Laser Cutting

Laser cutters are one of the most useful pieces of maker equipment available and can be found in many schools, shops, and maker spaces. This section provides a brief history of laser cutting and an understanding of some of the different types of lasers available. You'll also get an overview of what kinds of work can be done with a laser as well as tips on how to set up a laser to operate safely and how to avoid wasting materials.



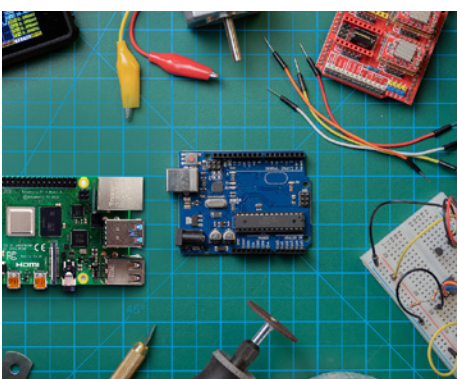
2. 3D Printing

3D printers are everywhere—in schools, in homes, in industry. This section will give you a brief history of 3D printing, show some of its capabilities, and give you tips on how to use 3D printers successfully. Best of all, there is a section all about troubleshooting, to help you master the process.



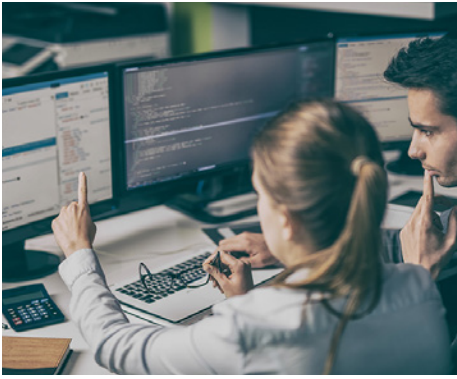
3. Vinyl Cutting

When it comes to merging creativity with technology and fun, it's hard to beat vinyl cutting. Vinyl cutters are one of the most common pieces of maker technology you can find in schools, homes, shops and maker spaces. This section will teach you about the history of vinyl cutting, different types of vinyl cutters on the market, what kinds of projects you can create with vinyl cutters, and tips on how to use this technology effectively.



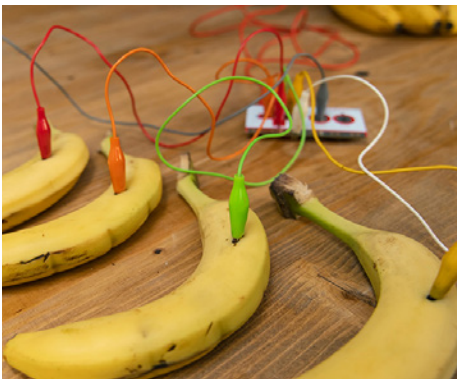
4. Raspberry Pi and Arduino

Adding electronics to a project used to require knowledge and skill that were beyond most people. But now single-board computers like the Raspberry Pi and microcontrollers like the Arduino have made the process easy and affordable. In this section, we'll compare both and explain what they are and what they do.



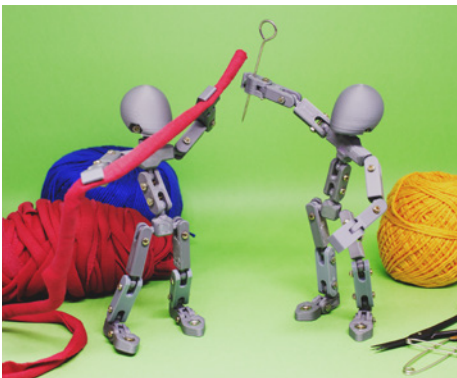
5. Coding

Computers and controllers, like those discussed above, are powerful resources, but they don't do anything without the right programming. Programs are sets of instructions that electronic devices use to perform tasks, and coding is the process of writing those instructions. In this section, we'll explain the basics of what coding is and resources you can use to learn how to do it.



6. Electronics Kits

There are countless kits available to educators that teach different concepts of electronics, but what's the difference between them, and which ones are right for you or your students? In this section, we provide an overview of some of the most popular kits and what those kits offer.



7. Stop-Motion Animation

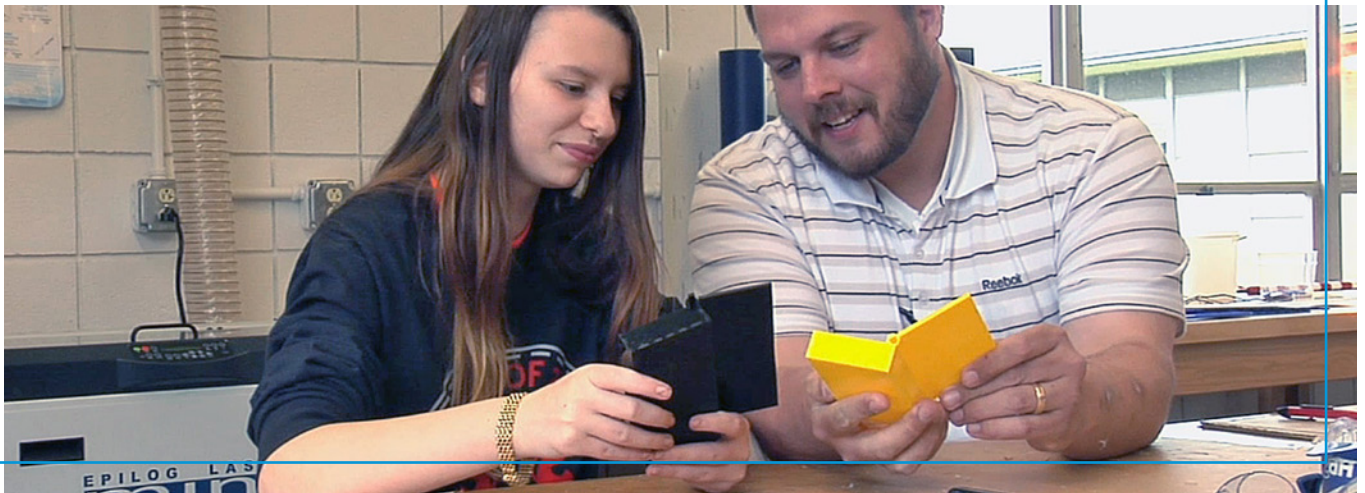
Shooting an informative video about your product is a great way to create a valuable video asset that can promote and explain your idea, but it's not the only method. Stop-motion animation is a fun, creative method of video production that allows students to create unique and entertaining content that they can use during a presentation. In this section, we outline the basic process of creating stop-motion animation sequences using a mobile device, such as a smartphone, tablet or chrome book, and a simple app which is free to download for the basic version.

Now you have all the tools and knowledge needed to present your product idea in a clear and professional manner!

Learning for the 21st Century

Real-world inventing with real-world student outcomes

Inventionland Education's Innovation Curriculum provides students with hands-on, immersive learning experiences that engage and entertain while teaching valuable critical thinking and problem-solving skills. We're here to encourage and cultivate the next generation of scientists, entrepreneurs, and creators so that we can continue to innovate, learn, and grow.



STEM, STEAM and Project-Based Learning

Students in grades K-12 apply STEM and STEAM knowledge to collaborate, identify and solve problems through the long-term development of their original inventions. Using our 9-Step Method, students learn about the processes of patenting, research, product design, prototype engineering, and marketing communications.

The course culminates in the Invention Contest, in which students pitch their ideas and receive constructive feedback from a panel of entrepreneurs and experts. Educators are finding that their students are gaining valuable skills, cross-curricular knowledge, and the confidence and self-esteem that lead to increased attendance, attitude and overall achievement.

We believe every person is born with the potential to be brilliant.

We know this because we've helped thousands of inventors from all walks of life bring their product ideas to market.

At Inventionland Education, we believe the world is full of incredibly creative, intelligent, and innovative people... even if many of them don't know it yet. We exist to provide the next generation with the right tools to succeed as innovators and inventors. We help teachers prepare the next generation of innovators and inventors.



Professional Development





IS A BLANKET
WITH SLEEVES A
DUMB IDEA?

IS A 3D PUZZLE
A DUMB IDEA?

IS THIS A D...

Professional Development

Confident teachers foster confidence in students. Our professional learning programs are designed to give teachers the tools they need to empower both students and themselves.

From single and multi-day intensive professional development courses to half-day workshops, teachers can earn state teacher continuing education credits, and even become trainers for their district and state Educational Services Agency.

Let us show you how our professional development courses can help teachers become inspirational leaders for a new generation of inventors and innovators!

From your classroom, you can help innovate the future.

Using our curriculum often causes teachers to think of their own product ideas or ways to solve real-life problems.



Our professional development courses and workshops offer teachers a safe space to explore Inventionland's proven 9-Step Method, turning their own ideas into innovations and inventions, so they can in turn encourage their own students to do the same.

**Providing
knowledge**

to ensure

your

success

in the

classroom



At Inventionland® Education, We Take Professional Development to New Heights!

How to do innovation education in your schools.

From our immersive, 3-day professional development program to topical workshops to custom training, our goal is to empower teachers with the hands-on knowledge, experience and confidence they need to prepare the innovators and inventors of the future.

Immersive PD

This intensive, 3-day professional development course allows teachers to experience the innovation courseware from a student's perspective.

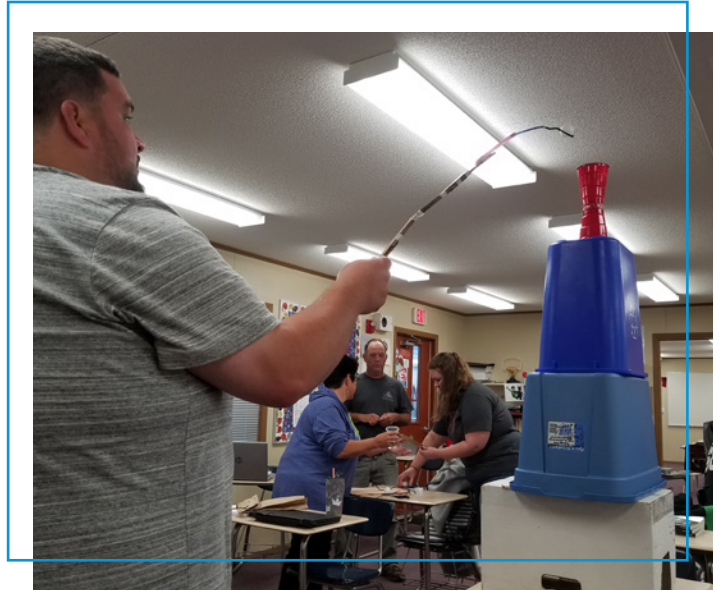
- Journey through the course as a student, including coming up with your own problem, solution, product pitch and invention
- Gain hands-on experience and confidence with the 9-Step Method and ABC's of Storytelling
- Receive training on the Inventionland education curriculum and courseware, online portal and student progress tracking
- Opportunities for instituting a train-the-trainer model within your district



Topical Workshops

We're proud to offer a wide variety of workshops to help teachers gain hands-on experience and confidence with maker space tools.

- 3D printers, laser cutters, CNC milling machines, vinyl cutters and more
- Prototyping with cardboard
- Prototyping with blue foam
- Mold with silicone
- Logo / package design
- Video production
- Stop motion
- Molding and casting



Just as we do for students, we offer fun, hands-on experiences to inspire creativity, teamwork and a growth mindset in teachers.

Custom Training

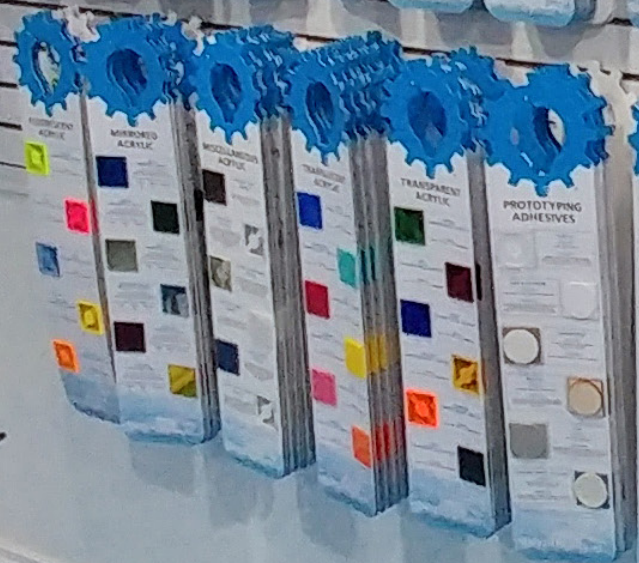
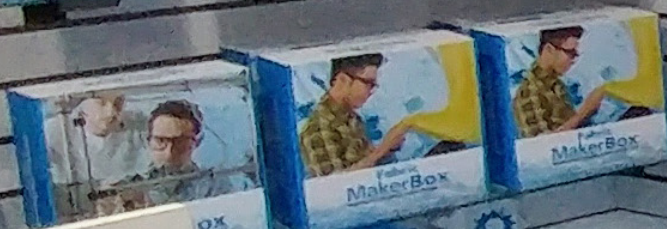
Thinking outside the box? Call us to discuss your needs and we look forward to making it happen.

- On-site training at Inventionland Education
- Virtual training
- Half-day, full-day options
- Back-to-school refresher trainings
- And so much more!



Teacher Resources

MAKER



CHARTS

CUTTING BOARD

LASER CUTTING TYPAR

LASER CUTTING WOOD

LASER CUTTING TIPS

LASER ENGRAVING & MATERIALS

LASER ENGRAVING
GUIDE TO APPROXIMATE PARAMETERS

LASER SETTINGS RECORDER

MOLDING
CASTING YOUR PART

COLOR VINYL

FLUORESCENT VINYL

HOLOGRAPHIC & MIRRORED VINYL

METALLIC GLITTER VINYL

WHAT THIS P...

HOW TO MATCH IDEAS

HOW TO SELECT A DESIGN



Teacher Resources

We have numerous unique and affordable products available that help create a transformative classroom environment. We specialize in designing products that give children an active and sensory-driven classroom experience.

These tactile activities allow students to see, touch and learn by doing, which completely alters engagement within the classroom.

Teacher resources and manipulatives can be used to guide students through the art of inventing, making and storytelling.

The products we feature here are the same ones our “Creationers” use at Inventionland on a daily basis to develop and promote innovative products that have been used by millions worldwide. Whether you’re creating a science lab, a technology ed class, an engineering facility, an art room, or inspiring math instruction, let us provide you with the tools and inspiration for a STEAM classroom. To see all of our Teacher Resources, visit our online store at store.inventionlandeducation.com

Our educational products are designed to allow students to see, touch and learn by doing, completely altering engagement within the classroom or maker space.



Providing

project-based

learning

that

helps

build

“Self-A-STEAM”



Teacher resources and manipulatives to guide students through the art of inventing, making and storytelling.

Our materials have been aligned with the relevant standards of each of the disciplines included in STEM and STEAM education.

Let Inventionland give you the tools that will help you prompt engagement and collaboration in the classroom today while building skills that will make your classroom a transformative lifelong memory for your students.

VISIT OUR ONLINE STORE

@ store.inventionlandeducation.com

MakerCharts®

MakerCharts break down complex concepts like 3D printing, vinyl cutting, laser cutting and prototyping into simple terms students and teachers can apply. Designed to hang on classroom walls, they are reliable reference points for teachers to continue the learning experience for students.



Peek-A-Boo® Posters

We've designed a series of posters that aren't always what they appear. Each poster shows a person or business in their early years; when the flap is lifted, it reveals what they became. Peek-A-Boo posters demonstrate to students that they can achieve their goal in life, regardless of where they started from.



MakerKits®

You receive cardboard 2D materials that are pre-cut using a laser cutter. Students assemble the materials from 2D flat shapes into a 3D functional object such as a pencil holder, clock or locker mirror. When you are teaching concepts in engineering or design, MakerKits are budget-friendly visual reminders of our course fundamentals.



MakerBoxes®

Students get an in-depth, step-by-step look at the manufacturing process of four different materials. Each kit is accompanied by interactive QR codes that link to videos so students can watch each metal, fabric, wood and plastic manufacturing process unfold before their eyes. MakerBoxes also promote active cross-curriculum learning and career readiness.



Invention Contests





Invention Contests

We believe in preparing students for real-world experiences. At the end of the course, we hold an Invention Contest that encourages students to develop confidence in presenting their ideas by pitching the product to a potential investor.

Students first compete within their schools in front of three judges who evaluate their inventions and presentations. We recommend including district superintendents, local business leaders, politicians, principals, and board members.

The winning group is sent to the national contest, which is held at our offices in Inventionland. Students visit our creative work space while also getting the opportunity to present their inventions before a panel of state and national experts.

The competing students leave not only feeling more confident, but also possessing new knowledge and expertise on both pitching and marketing strategies.

Following our ABCs of Storytelling steps, students script, shoot, and edit a pitch for their product.

Their public speaking, research, marketing, and presentation skills are put to the test when they present to a panel of judges.



**Student
presentations
with
winning
outcomes!**



Invention contests are the perfect way to demonstrate — and celebrate — student progress.

Pitching their product ideas and business plans to a panel of experts allows students to show what they've learned throughout the course. As students progress through the competition, they gain confidence, demonstrate their presentation skills, improve their public speaking and develop ever stronger critical thinking skills along the way.

Local Contests

With the guidance of our Partner Services team, you can easily run your own Invention Contests and give your students the opportunity to shine!

- Host your own school- or district-wide contest, where students present in front of a panel of school, community and business leaders
- Students gain real-life experience pitching ideas and their inventions and innovations
- Get turnkey instructions for how to set up and conduct a local contest, including questions and scoring rubrics for the judging panel
- Celebrate the accomplishments of the budding inventors and innovators
- Increase parent and community engagement in a fun and creative way



National Contests

Winners of local Invention Contests are invited to participate in Inventionland Education's annual National Contest, hosted in-person at Inventionland or virtually.

- Students present in front of a panel of national experts and business leaders
- Students gain real-life experience pitching ideas and their inventions and innovations
- Students and chaperones receive a special, behind-the-scenes tour of Inventionland
- Gain recognition for your students' achievements



A fun and engaging way to combine academic and cross-disciplinary skills.



Check out one of our Invention Contests!

Invention Contests give parents, school administrators and community leaders a chance to hear from budding innovators in their communities. Students follow our ABCs of Storytelling steps, which teach them how to script, shoot, and edit a pitch for their product.

Lab Design Services





Innovation Labs® Design Services

Inspire student creativity and engagement when you transform classrooms into imaginative, stimulating spaces with our award-winning Innovation Labs® Design Services.

With a full line of Innovation Labs, schools can choose from various design elements to turn spaces into immersive educational environments. From treehouses to pirate ships, we help you reinvent your space to foster creativity and teamwork. We can work directly with your staff to redesign your own available space in the most efficient way.

Let us show you how you can transform old classrooms and underutilized spaces into themed immersive learning environments.

“Once students are in there, they focus on their innovation.”

- George Davison

Working in close partnership with district and classroom staff, our Innovation Labs® Design Services team can help you reinvent your space and ensure that your needs are met every step of the way. We provide the resources and expertise to convert any existing space into an immersive environment.



Providing

immersive

learning

environments

that

inspire

creativity



Transform classrooms and underutilized spaces into immersive learning environments that inspire creativity.

Our Innovation Labs® Design Services team at Inventionland Education works with you to reimagine and bring to life imaginative and stimulating spaces. We always strive to design the most original learning environments to help promote creativity within the classroom. It's all about collaboration and perfect for immersive learning .

Discovery Process

During the Discovery Process, we work with you to investigate the needs and goals of the proposed space(s). Through interviews with administration and teachers who will be utilizing the space, we learn important information about space size, school requirements and budgets, as well as what's important to your teachers and students.



Innovation Labs® Design Services

With a full line of Innovation Labs, the Innovation Labs Design Services team will create mood boards, themes, features and custom sketches for the space based on findings during the Discovery Process. The proposals will also include furniture and equipment suggestions along with 3D renderings of what the final Innovation Lab would look like.

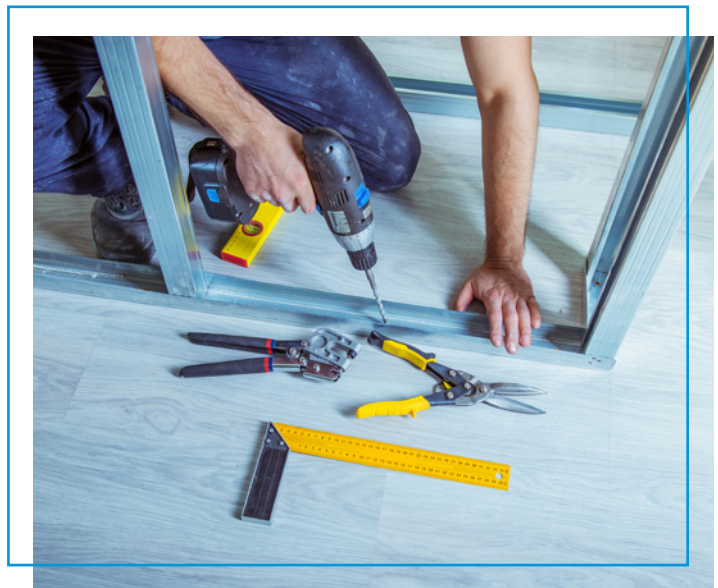
In the 2017-18 academic year we were awarded the prestigious Edison Design Award as the first-ever educational space considered in the competition. We believe that creating an environment that brings technology, innovation, and inspiration together allows student engagement and imagination to soar.



Customized design plans and services based on your unique needs and budget.

Construction and Installation Services

Inventionland Education will be there every step of the way to ensure that the plan comes to life. During the Construction and Installation Services phase, we work directly with design architects and construction teams and help oversee the project from beginning to the end. We will also work with them to build all the custom features.



Support & Professional Development

At Inventionland Education, we believe that confident teachers foster confidence in students. In partnership with the administration, we can put together a professional development plan for your teachers on how to best use the new space to inspire innovation, Imagination and student learning.



We can create a customized design plan based on your budget and the age range of your students.

We can also work with your desired architects and construction teams upon request. Even if you're simply adding small elements of color and inspiration, it can vastly improve the classroom environment.

Witness the Transformation

Get a glimpse of some of our amazing before-and-after classroom and multi-purpose space transformations.

K-5 Elementary



before-and-after

Middle School



before-and-after

High School



before-and-after

Business



before-and-after



International awards agencies and news media continue to notice the districts that are turning their learning spaces into destinations.



The *Wall Street Journal* wrote about “The Classroom of Tomorrow,” describing a library space renovated with Inventionland furnishings. Then, for the first time in history, a school (Seneca Valley School District in Pittsburgh) won an Edison Award. What might happen if you collaborate with Inventionland on classroom redesign?

Spaces

to

Innovate

Make a great first
impression that will not
only attract and inspire
but bring students and
teachers together.



Large

As the number of students in a space grows, so does the need for scalable furnishings that can create a theme. Our innovative furnishings can be designed with a centerpiece that draws learners into the space, combined into a wide range of configurations, or installed as individual components. From building spaces of 60,000+ square feet to large libraries, Inventionland furnishings have made possible uniquely inspiring yet cost-effective renovations.



Spaces

Renovate:

Libraries
Auditoriums
Rec Centers
...and more

Themes:

Clouds
Forests
Robots
Treehouse
Shipwreck Island
Inventalot Castle
...and more

(you can combine themes in large spaces)



Informal

Hallways, corridors, foyers and entryways are valuable spaces that attract learners' attention and set the stage before they enter a space.



Spaces

Renovate:

Walls
Halls
Doorways
Ceilings
...and more

Components:

Clouds
Trees (Maple and Palm)
Robots
Wall Art
Knights
...and more



Emerging

As education continues to push into the future, our furnishings help to unleash learners' energy and creativity in Innovation Labs®, maker spaces, electronics labs, media labs and more. Get rid of the old easels and innovate how ideas are shared with others by using the rotational dry erase light panels. They can also be used to divide up large spaces and create new zones for learning.



after

Spaces

Renovate:

Innovation Labs®
Makerspaces
Classrooms
Lounges
Conference Rooms
...and more

Components:

Light Panels (dry erase)
Light Columns
Wall Art
...and more

Themed Centerpieces

We knew we could make an impact in learning if we could figure out a way to make space “pull” students in to learn instead of “pushing” students into a space to learn.



Berkshire School's base model with upgrades (photo)



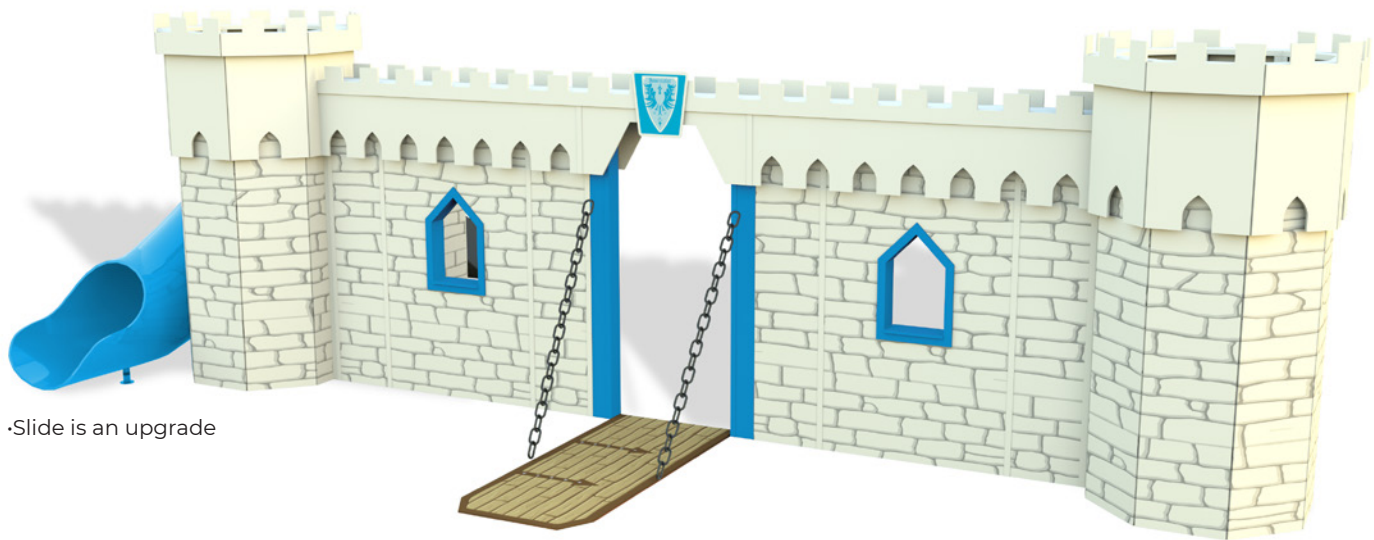
Leechburg School's base model (photo)

Inventalot™ Castle



Berkshire School's castle inside (photo)

Inventalot™ Castle (with accent colors)



•Slide is an upgrade

We've lowered the drawbridge of Inventalot® Castle, to welcome students into the kingdom of learning.

This depicts the base model of Inventalot™ Castle. You can customize this castle by adding upgrades and make it as big as you like by adding more wall panels and turrets.

Base model includes:

- 2 turrets
- 2 front walls with windows
- 1 door arch wall
- 1 drawbridge with chains
- 2 castle knights

Note: the base model of the castle is 22' wide. For additional size details, please give us a call and we will send you detailed drawings on the specs..

Upgrades:

- additional walls (48" and 18")
- additional turrets
- slide with steps
- ceiling clouds (page 119)
- Inventionland trees (pages 111-115)
- Inventionland wall art (page 98)
- castle knights (page 102)
- maker tables and more..

School color options (slide, window and door openings):



Chipper's Treehouse can be customized to your school's mascot as shown in this photo



Berkshire School's base model with upgrades (photo)



Haine School's custom tunnel treehouse model (photo)

Chipper's™ Treehouse



Berkshire School's treehouse inside (photo)

Chipper's™ Treehouse (with accent colors)



•Slide is an upgrade

Come on up! Students of all ages are attracted to treehouses and Chipper's Treehouse inspires all to learn.

This depicts the base model of Chipper's™ Treehouse. You can customize this treehouse by adding upgrades and make it as big as you like by adding more wall panels and tree branches.

Base model includes:

- 2 window wall panels with tree trunk
 - 2 tree branches
 - 1 doorway panel with tree trunk
 - 1 Chipper™ Cloud (cloud)
- * Slatwall inside to hang tools and resources

Upgrades:

- additional walls
- additional branches
- slide with steps
- ceiling clouds (page 119)
- Inventionland trees (pages 111-115)
- Inventionland wall art (page 98)
- maker tables and more...

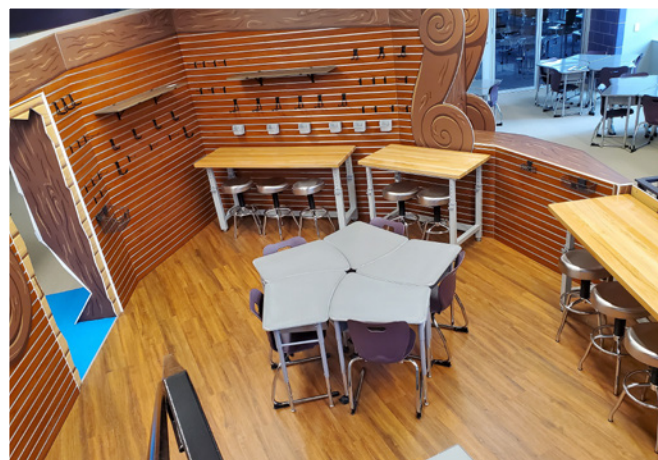
School color options (slide, window and door openings):





Rowan School Discovery Pirate Ship theme showing Tiki Tech Bar with awnings, wall art and clouds (photo)

Berkshire School's base model with upgrades (photo)



Berkshire School's pirate ship inside (photo)

Discovery™ Pirate Ship

Discovery™ Pirate Ship (with accent colors)



Avast, ye landlubbers! Open your minds, and come aboard the Discovery. Arrrrgh!

This depicts the base model of Discovery™ Pirate Ship. You can customize this pirate ship by adding upgrades and making it as big as you like by adding more ship wall panels.

Base model includes:

- 2 front bow panels with water graphics
 - 2 octopus halves
 - 1 doorway panel
- * Slatwall inside to hang tools and

Upgrades:

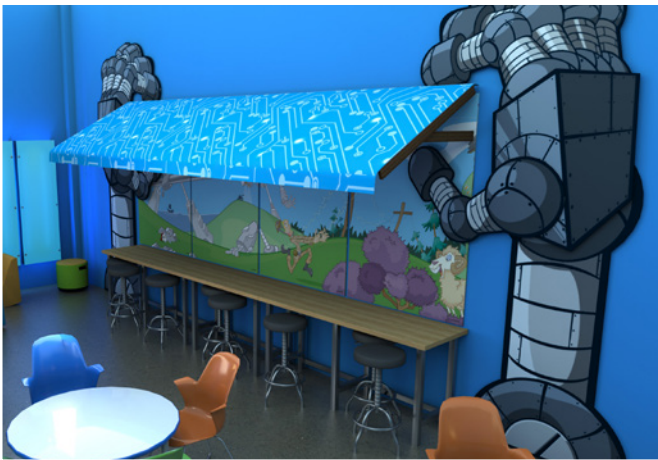
- additional ship walls
- slide with steps
- ceiling clouds (page 119)
- Inventionland trees (pages 111-115)
- Inventionland wall art (page 98)
- shipwreck wall art (pages 94-97)
- Tiki Tech Bar (page 104)
- octopus halves (color customizable)
- maker tables and more...

School color options (slide, octopus spots and sail):





Berkshire School's base model with upgrades (photo)



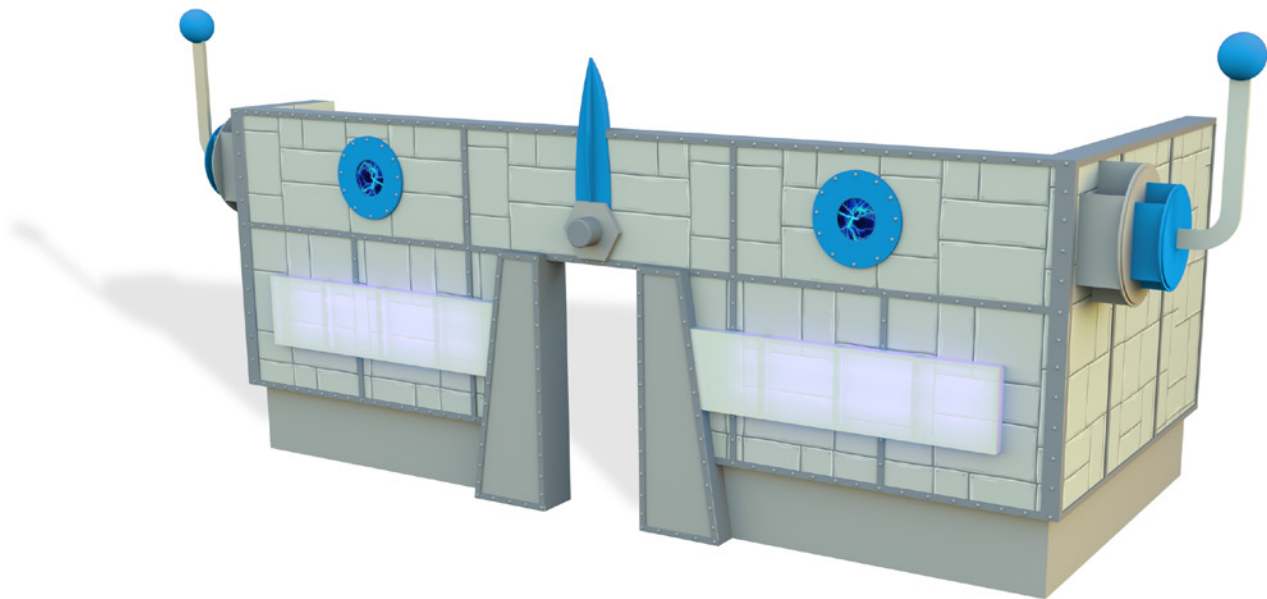
Berkshire School's robot hands with awning (rendering)

Inventron™ Robot



Connoquenessing Valley School's wall art (photo)

Inventron™ Robot (with accent colors)



There is always a flash of inspiration inside Inventron the robot. This ensures that every day will be an electrifying experience!

This depicts the base model of Inventron™ Robot. You can customize this robot by adding upgrades and making it as big as you like by adding more wall panels.

Base model includes:

- 1 entryway panel
- 2 front panels
- 2 side panels
- 2 dancing robots
- 2 dry-erase panels

* Slatwall inside to hang tools and resources

Upgrades:

- dry-erase light panels
- plasma disc light-up eyes
- ceiling clouds (page 119)
- Inventionland trees (pages 111-115)
- Inventionland “robot” wall art (page 99)
- digital wall art (pages 84-86)
- Robot Tech Bar (page 105)
- dancing robots (page 103)
- maker tables and more...

School color options (slide, octopus spots and sail):





Haine School's maker space (photo)



Haine School's entryway (photo)

Storybook Forest™



Connoquenessing Valley School's wall art (photo)

Storybook Forest™



You get 20 of
"The Adventures of Chipper Cloud"
books with this centerpiece



It's always bright and cheery in Storybook Forest. Come on in and let your mind soar to new heights.

This depicts the base model of Storybook Forest™. You can customize this forest by adding upgrades and making it as big as you like by adding more trees, wall panels and clouds.

Base model includes:

- 4 pillar trees
- 2 wall trees
- 2 corner trees
- 2 entryway trees
- 1 Chipper™ Cloud (cloud)
- 54 ceiling clouds
- 40 themed wall panels
- 20 *The Adventures of Chipper Cloud* book

Upgrades:

- ceiling clouds (page 119)
- Inventionland wall art (pages 98, 99)
- creative power wall art (pages 87-89)
- maker tables and more...



Berkshire School's double Stonehenge used for space division and brainstorming (photo)



Hannah Ashton Stonehenge (photo)

Bright Ideaz™ Dry-Erase Light Panels



Kenton High School (rendering)

Bright Ideaz™ Dry-Erase Light Panels



It's a mystery where human creativity comes from... these light-up dry-erase panels are designed to capture and celebrate ideas during brainstorming.

This depicts the base model of Bright Ideaz™ Dry-Erase Light Panels. You can add as many light panels for your space as you desire. They are designed to be easily installed and plugged into existing electrical receptacles, or you can have them hard-wired into the electrical system to be switched on at the wall.

Base model includes:

- 7 dry-erase light panels
- 7 multi-colored LED light strips
- 1 IR controller with remote

Upgrades:

- additional dry-erase light panels
- creative power wall art (pages 87-89)
- space wall art (pages 90-93)
- digital wall art (pages 84-86)
- maker tables and more...

Walls, Halls,

Entryways

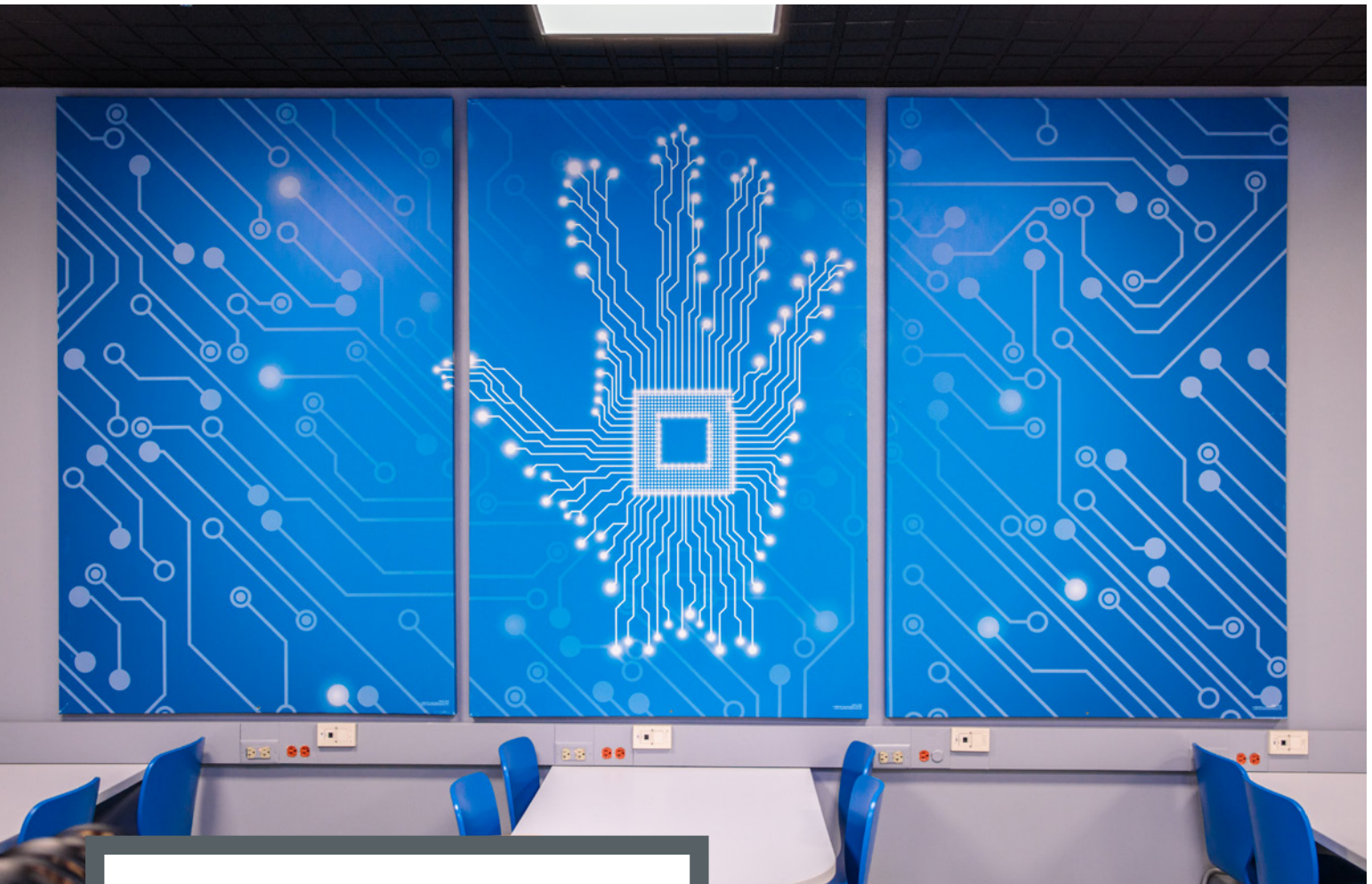
and

Accents

(into the school or into the learning space)

There is no better way than
Inventionland's distinctive
design flourishes to set
the mood and to prepare
students for what they
are about to experience in
themed learning spaces
and entire facilities.

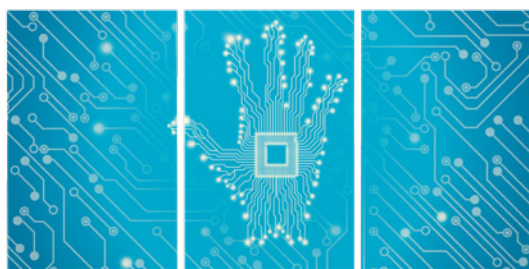
Digital Hand Wall Art



Connoquenessing Valley School's wall panels (photo)

You can inspire everyone from basic computer learners to advanced computer students with wall art that conveys the digital world. Creating an immersive environment makes the exciting world of computer science more welcoming.

These durable 4'x6' printed panels come with mounting brackets and safety screws. The brackets make them easy to install and the safety screws prevent tampering.



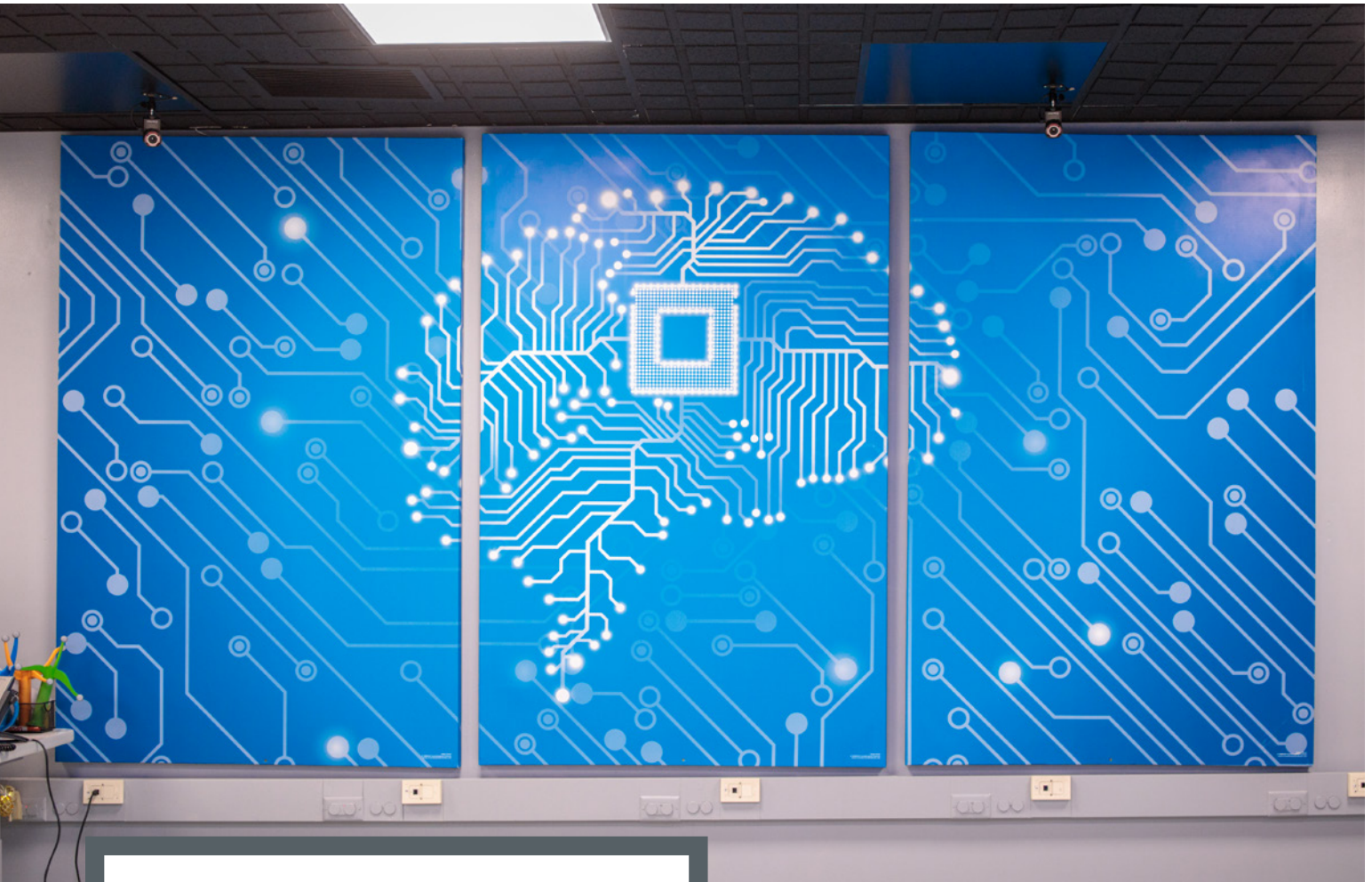
Digital Hand wall art, set of 3 flat panels displayed

Note: We sell these as a group of 3 panels as shown above.
Upgrade: Add the right wall art panels to create a theme on an entire wall.

Model	Description	D"	W"	H"
DHWA-3	3 digital hand wall art panels	.5	48	72
DHWA-R	1 right wall art panel (upgrade)	.5	48	72

* For intellectual property information on patents, trademarks and copyrights contact Inventionland's legal department

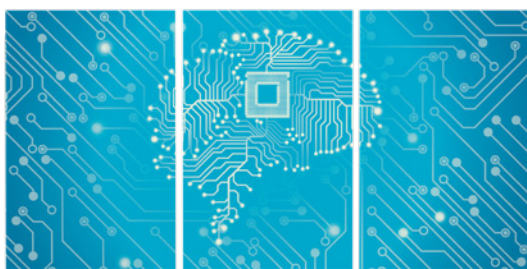
Digital Brain Wall Art



Connoquenessing Valley School's wall panels (photo)

You can inspire everyone from basic computer learners to advanced computer students with wall art that conveys the digital world. Creating an immersive environment makes the exciting world of computer science more welcoming.

These durable 4'x6' printed panels come with mounting brackets and safety screws. The brackets make them easy to install and the safety screws prevent tampering.



Digital Brain wall art, set of 3 flat panels displayed

Note: We sell these as a group of 3 panels as shown above.
Upgrade: Add the right wall art panels to create a theme on an entire wall.

Model	Description	D"	W"	H"
DBWA-3	3 digital brain wall art panels	.5	48	72

* For intellectual property information on patents, trademarks and copyrights contact Inventionland's legal department

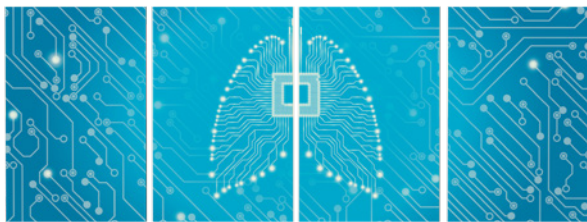
Digital Lungs Wall Art



Connoquenessing Valley School's wall panels (photo)

You can inspire everyone from basic computer learners to advanced computer students with wall art that conveys the digital world. Creating an immersive environment makes the exciting world of computer science more welcoming.

These durable 4'x6' printed panels come with mounting brackets and safety screws. The brackets make them easy to install and the safety screws prevent tampering.



Digital Lungs wall art, set of 4 flat panels displayed

Note: We sell these as a group of 4 panels as shown above.
Upgrade: Add the right and or left wall art panels to create a theme on an entire wall.

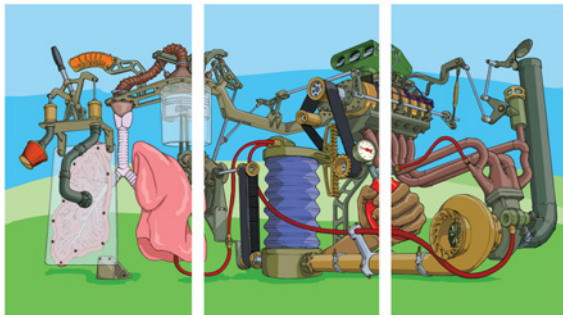
Model	Description	D"	W"	H"
DLWA-4	4 digital lungs wall art panels	.5	48	72
DLWA-R	1 right wall art panel (upgrade)	.5	48	72
DLWA-L	1 left wall art panel (upgrade)	.5	48	72

* For intellectual property information on patents, trademarks and copyrights contact Inventionland's legal department

Air Power Wall Art



Leechburg Area School's wall panels (photo)



Air Power wall art, set of 3 flat panels displayed

Imagination puts science to work to make things that improve your life. Strange ideas, invisible atoms, sounds you can't hear and light you can't see—science and imagination put these curiosities to good use, to create new products and improve existing ones.

These durable 4'x6' printed panels come with mounting brackets and safety screws. The brackets make them easy to install and the safety screws prevent tampering.

Note: We sell these as a group of 3 panels as shown above.

Model	Description	D"	W"	H"
APWA-3	3 air power wall art panels	.5	48	72

* For intellectual property information on patents, trademarks and copyrights contact Inventionland's legal department

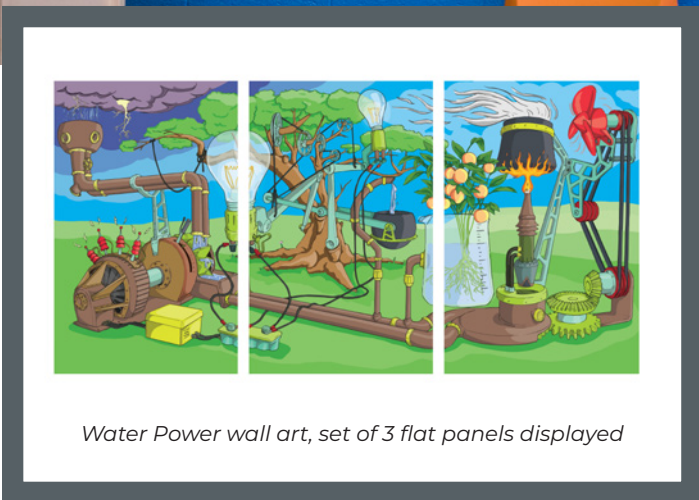
Water Power Wall Art



Leechburg Area School's wall panels (photo)

Imagination puts science to work to make things that improve your life. Strange ideas, invisible atoms, sounds you can't hear and light you can't see—science and imagination put these curiosities to good use, to create new products and improve existing ones.

These durable 4'x6' printed panels come with mounting brackets and safety screws. The brackets make them easy to install and the safety screws prevent tampering.



Water Power wall art, set of 3 flat panels displayed

Note: We sell these as a group of 3 panels as shown above.

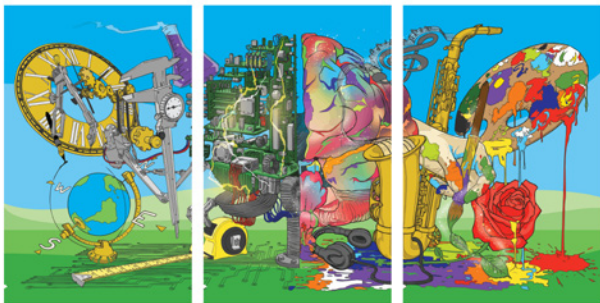
Model	Description	D"	W"	H"
WPWA-3	3 water power wall art panels	.5	48	72

* For intellectual property information on patents, trademarks and copyrights contact Inventionland's legal department

Creativity Construct Wall Art



Leechburg Area School's wall panels (photo)



Creativity Construct wall art, set of 3 flat panels displayed

Note: We sell these as a group of 3 panels as shown above.

Imagination puts science to work to make things that improve your life. Strange ideas, invisible atoms, sounds you can't hear and light you can't see—science and imagination put these curiosities to good use, to create new products and improve existing ones.

These durable 4'x6' printed panels come with mounting brackets and safety screws. The brackets make them easy to install and the safety screws prevent tampering.

Model	Description	D"	W"	H"
CCWA-3	3 creativity construct wall art panels	.5	48	72

* For intellectual property information on patents, trademarks and copyrights contact Inventionland's legal department

Space Hero City Wall Art



Berkshire High School's wall panels (photo)

The future will bring miraculous innovations and bold exploration. These science fiction fantasy-themed art panels are uniquely designed to create a “view of the future” as if seen through the windows of a space cruiser or future-city tower. May the force inspire you!

These durable 4'x6' printed panels come with mounting brackets and safety screws. The brackets make them easy to install and the safety screws prevent tampering.



Space Hero City wall art, set of 3 flat panels displayed

Note: We sell these as a group of 3 panels as shown above.

Model	Description	D"	W"	H"
SHCWA-3	3 space hero city wall art panels	.5	48	72

* For intellectual property information on patents, trademarks and copyrights contact Inventionland's legal department

Space Hero Ships Wall Art



Berkshire High School's wall panels (photo)

The future will bring miraculous innovations and bold exploration. These science fiction fantasy-themed art panels are uniquely designed to create a "view of the future" as if seen through the windows of a space cruiser or future-city tower. May the force inspire you!

These durable 4'x6' printed panels come with mounting brackets and safety screws. The brackets make them easy to install and the safety screws prevent tampering.



Space Hero Ships wall art, set of 3 flat panels displayed

Note: We sell these as a group of 3 panels as shown above.

Model	Description	D"	W"	H"
SHSWA-3	3 space hero ships wall art panels	.5	48	72

* For intellectual property information on patents, trademarks and copyrights contact Inventionland's legal department

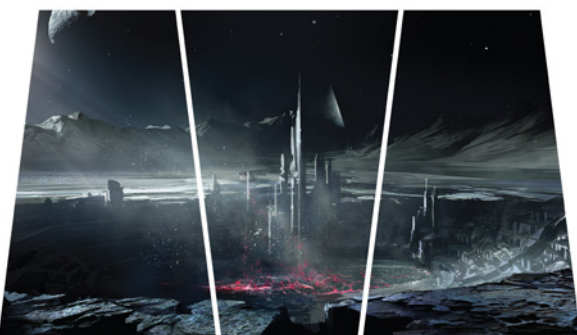
Dark Space City Wall Art



Berkshire High School's wall panels (photo)

The future will bring miraculous innovations and bold exploration. These science fiction fantasy-themed art panels are uniquely designed to create a “view of the future” as if seen through the windows of a space cruiser or future-city tower. May the force inspire you!

These durable 4'x6' printed panels come with mounting brackets and safety screws. The brackets make them easy to install and the safety screws prevent tampering.



Dark Space City wall art, set of 3 flat panels displayed

Note: We sell these as a group of 3 panels as shown above.

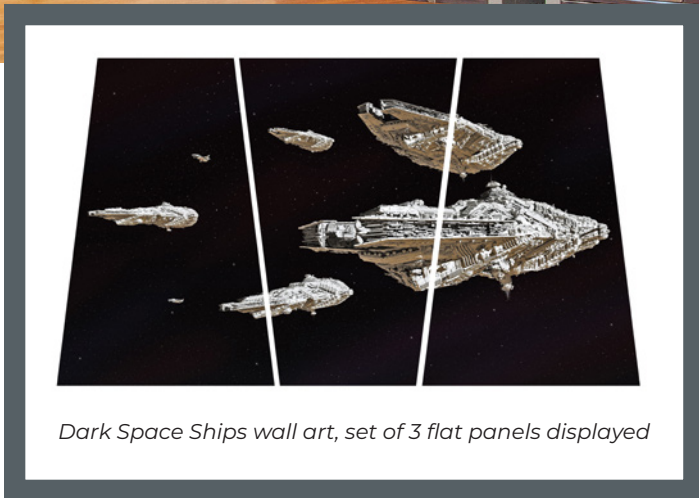
Model	Description	D"	W"	H"
DSCWA-3	3 dark space city wall art panels	.5	48	72

* For intellectual property information on patents, trademarks and copyrights contact Inventionland's legal department

Dark Space Ships Wall Art



Berkshire High School's wall panels (photo)



Dark Space Ships wall art, set of 3 flat panels displayed

Note: We sell these as a group of 3 panels as shown above.

The future will bring miraculous innovations and bold exploration. These science fiction fantasy-themed art panels are uniquely designed to create a “view of the future” as if seen through the windows of a space cruiser or future-city tower. May the force inspire you!

These durable 4'x6' printed panels come with mounting brackets and safety screws. The brackets make them easy to install and the safety screws prevent tampering.

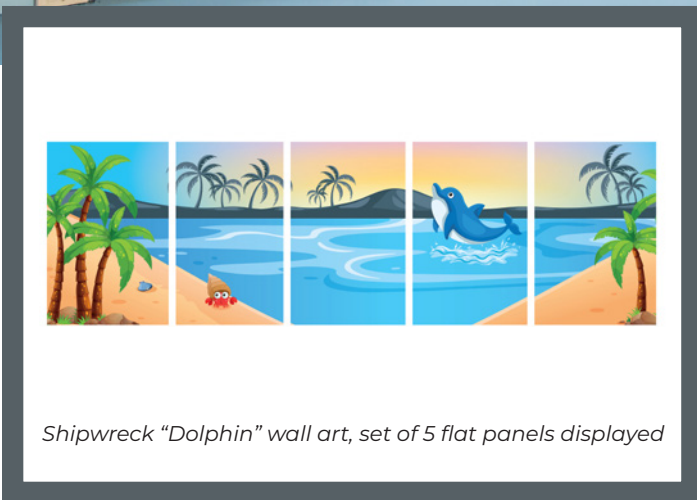
Model	Description	D"	W"	H"
DSSWA-3	3 dark space ships wall art panels	.5	48	72

* For intellectual property information on patents, trademarks and copyrights contact Inventionland's legal department

Shipwreck “Dolphin” Wall Art



Rowan School's wall panels (photo)



Shipwreck “Dolphin” wall art, set of 5 flat panels displayed

Note: We sell these as a group of 5 panels as shown above.

Students can benefit from this space, because it grabs their attention, engages them, and encourages them to use their imagination while learning. These panels are a great choice, because they create a bright and positive theme for a space. They were created to accompany the Discovery™ Pirate Ship centerpiece theme.

These durable 4'x6' printed panels come with mounting brackets and safety screws. The brackets make them easy to install and the safety screws prevent tampering.

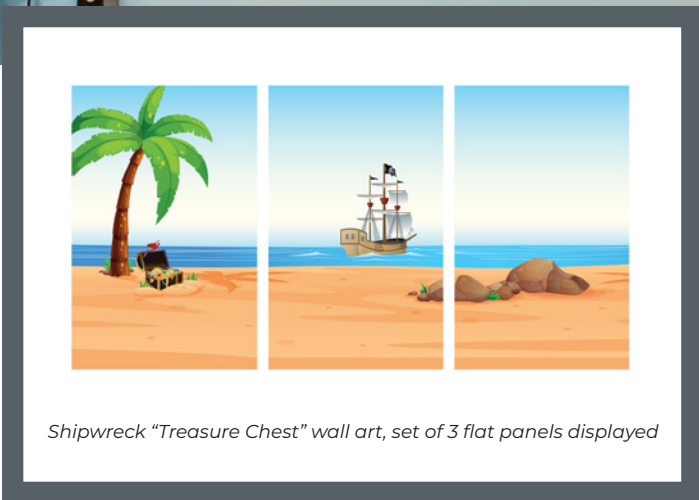
Model	Description	D"	W"	H"
SWDWA-5	5 shipwreck “dolphin” wall art panels	.5	48	72

* For intellectual property information on patents, trademarks and copyrights contact Inventionland's legal department

Shipwreck “Treasure Chest” Wall Art



Rowan School's wall panels (photo)



Shipwreck “Treasure Chest” wall art, set of 3 flat panels displayed

Note: We sell these as a group of 3 panels as shown above.

Students can benefit from this space, because it grabs their attention, engages them, and encourages them to use their imagination while learning. These panels are a great choice, because they create a bright and positive theme for a space. They were created to accompany the Discovery™ Pirate Ship centerpiece theme.

These durable 4'x6' printed panels come with mounting brackets and safety screws. The brackets make them easy to install and the safety screws prevent tampering.

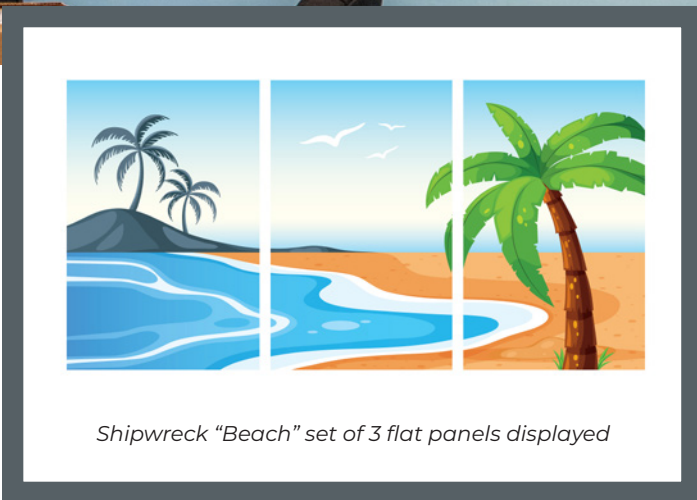
Model	Description	D"	W"	H"
SWTCWA-3	3 shipwreck “treasure chest” wall art panels	.5	48	72

* For intellectual property information on patents, trademarks and copyrights contact Inventionland's legal department

Shipwreck “Beach” Wall Art



Rowan School's wall panels (photo)



Shipwreck “Beach” set of 3 flat panels displayed

Note: We sell these as a group of 3 panels as shown above.

Students can benefit from this space, because it grabs their attention, engages them, and encourages them to use their imagination while learning. These panels are a great choice, because they create a bright and positive theme for a space. They were created to accompany the Discovery™ Pirate Ship centerpiece theme.

These durable 4'x6' printed panels come with mounting brackets and safety screws. The brackets make them easy to install and the safety screws prevent tampering.

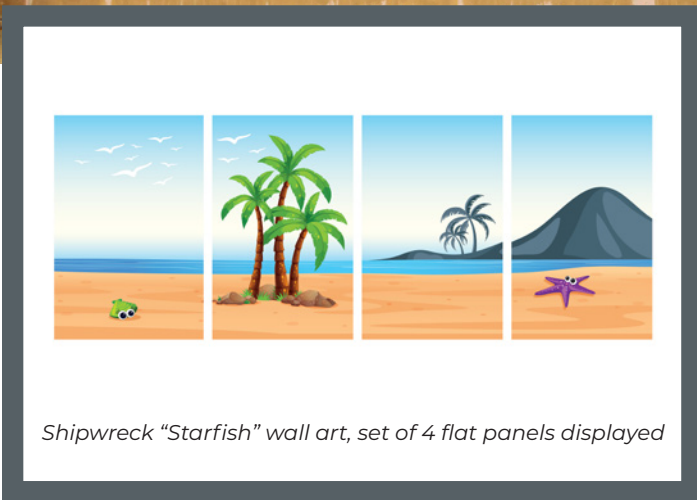
Model	Description	D"	W"	H"
SWBWA-3	3 shipwreck “beach” wall art panels	.5	48	72

* For intellectual property information on patents, trademarks and copyrights contact Inventionland's legal department

Shipwreck “Starfish” Wall Art



Rowan School's wall panels (photo)



Shipwreck “Starfish” wall art, set of 4 flat panels displayed

Note: We sell these as a group of 4 panels as shown above.

Students can benefit from this space, because it grabs their attention, engages them, and encourages them to use their imagination while learning. These panels are a great choice, because they create a bright and positive theme for a space. They were created to accompany the Discovery™ Pirate Ship centerpiece theme.

These durable 4'x6' printed panels come with mounting brackets and safety screws. The brackets make them easy to install and the safety screws prevent tampering.

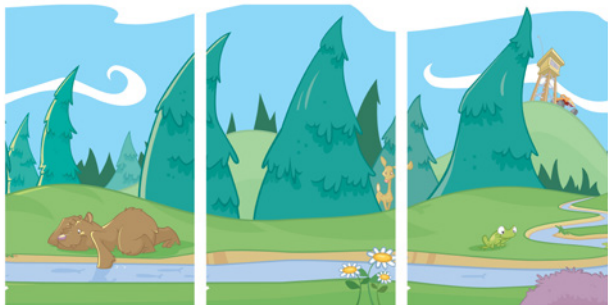
Model	Description	D"	W"	H"
SWSFWA-4	3 shipwreck “starfish” wall art panels	.5	48	72

* For intellectual property information on patents, trademarks and copyrights contact Inventionland's legal department

Inventionland® “Bear” Wall Art



Connoquenessing Valley School's wall panels (photo)



Bear scene wall art, set of 3 flat panels displayed

Note: We sell these as a group of 3 panels as shown above.

Inventionland is a whimsical world of wonder! Its forests are filled with funny, furry friends. The rolling hills are riddled with rebellious, rampaging robots, and the skyline is a stage for secret forgotten fairy tales! Invite your students into a world of imagination without ever leaving the classroom, with Inventionland-themed art panels.

These durable 4'x6' printed panels come with mounting brackets and safety screws. The brackets make them easy to install and the safety screws prevent tampering.

Model	Description	D"	W"	H"
ILBSWA-3	3 bear scene wall art panels	.5	48	72

* For intellectual property information on patents, trademarks and copyrights contact Inventionland's legal department

Inventionland “Robot” Wall Art



Connoquenessing Valley School's wall panels (photo)



Robot scene wall art, set of 5 flat panels displayed

Note: We sell these as a group of 5 panels as shown above.

Inventionland is a whimsical world of wonder! Its forests are filled with funny, furry friends. The rolling hills are riddled with rebellious, rampaging robots, and the skyline is a stage for secret forgotten fairy tales! Invite your students into a world of imagination without ever leaving the classroom, with Inventionland-themed art panels.

These durable 4'x6' printed panels come with mounting brackets and safety screws. The brackets make them easy to install and the safety screws prevent tampering.

Model	Description	D"	W"	H"
ILRSWA-5	5 robot scene wall art panels	.5	48	72

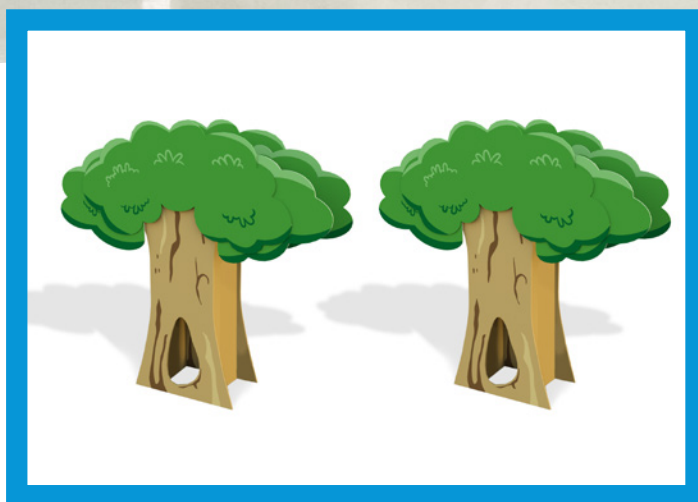
* For intellectual property information on patents, trademarks and copyrights contact Inventionland's legal department

Inventionland® Trees (entryway)



Trees are inviting and comforting, so why not let them lead you to a place of learning? As you can see, the hallway has been utilized to attract learners and prepare them for the environment they are about to enter.

Mounting brackets and safety screws included. The brackets make them easy to install and the safety screws prevent tampering.



Model

Description

ILTE	2 pillar trees
------	----------------

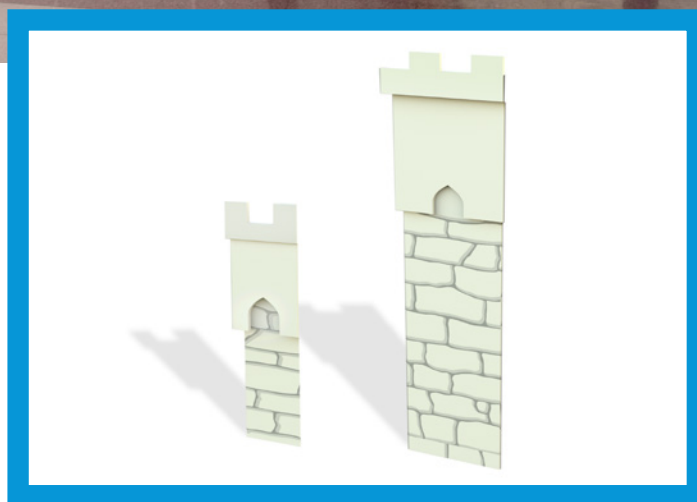
* For intellectual property information on patents, trademarks and copyrights contact Inventionland's legal department

Inventalot™ Castle (entryway)



These castle-themed panels will add a touch of royalty to any entryway. Mix and match the two different sizes to fill your entry space. As you can see, the hallway has been utilized to attract learners and prepare them for the environment they are about to enter.

Mounting brackets and safety screws included. The brackets make them easy to install and the safety screws prevent tampering.



Model

Description

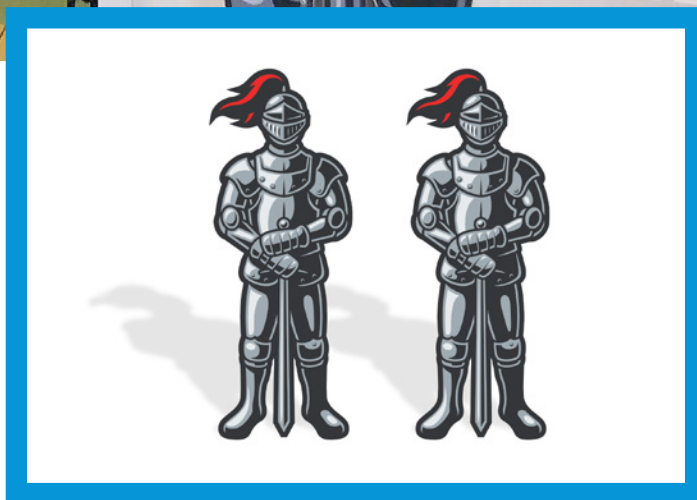
Model	Description
ILCE	2 or more castle wall panels

Castle Knights (accents)



Having a pair of knights guarding your castle is top-notch security and quite royal. These are easily mounted anywhere and really make a statement. As you can see, the hallway has been utilized to attract learners and prepare them for an environment that they are about to enter.

Mounting brackets and safety screws included. The brackets make them easy to install and the safety screws prevent tampering.



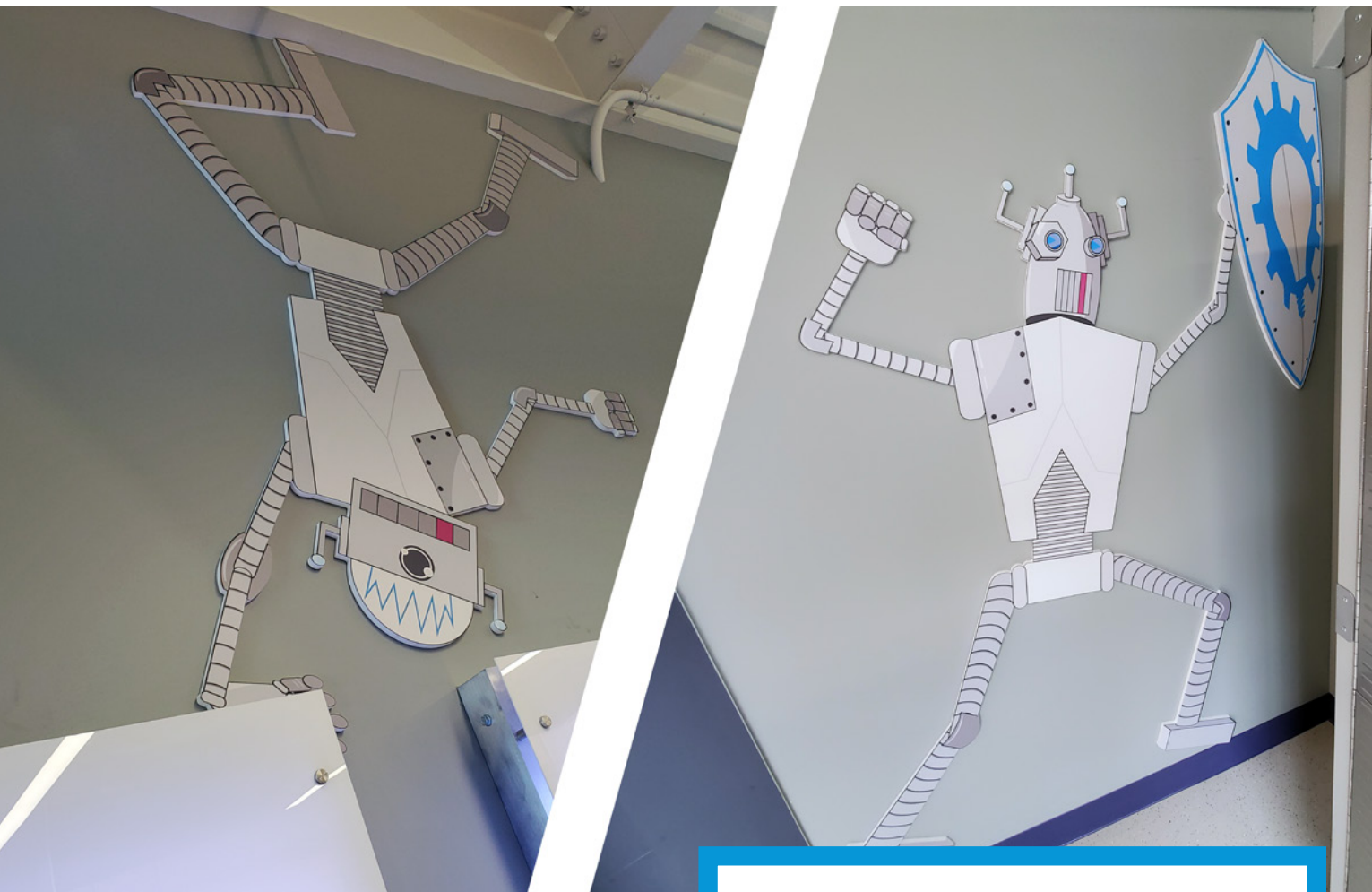
Model

Description

CKA 2 standing castle knight characters

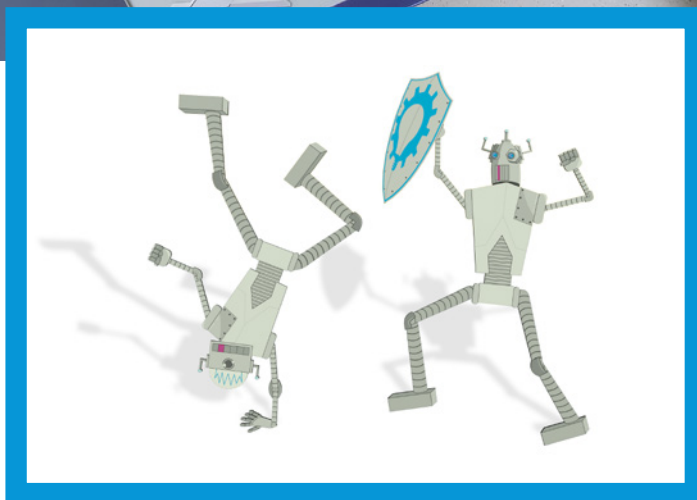
* For intellectual property information on patents, trademarks and copyrights contact Inventionland's legal department

Dancing Robots (accents)



Robots in your classroom are the perfect addition to any computer lab. These are easily mounted anywhere and really make a statement. As you can see, the hallway has been utilized to attract learners and prepare them for an environment that they are about to enter.

Mounting brackets and safety screws included. The brackets make them easy to install and the safety screws prevent tampering.



Model	Description
DRA	2 dancing robot characters

* For intellectual property information on patents, trademarks and copyrights contact Inventionland's legal department

Tiki Tech Bar



Make the most of your workspace while inspiring your students' imaginations with our Tiki Tech Bar. The straw decor awning and work benches with solid wood on top frame a set of tropical-themed art panels, turning any ordinary wall into an imaginative island getaway. The tropical island theme of the Tiki Tech Bar makes it a perfect pairing for the Discovery™ Pirate Ship themed centerpiece.



Mounting brackets and safety screws included. The brackets make them easy to install and the safety screws prevent tampering.

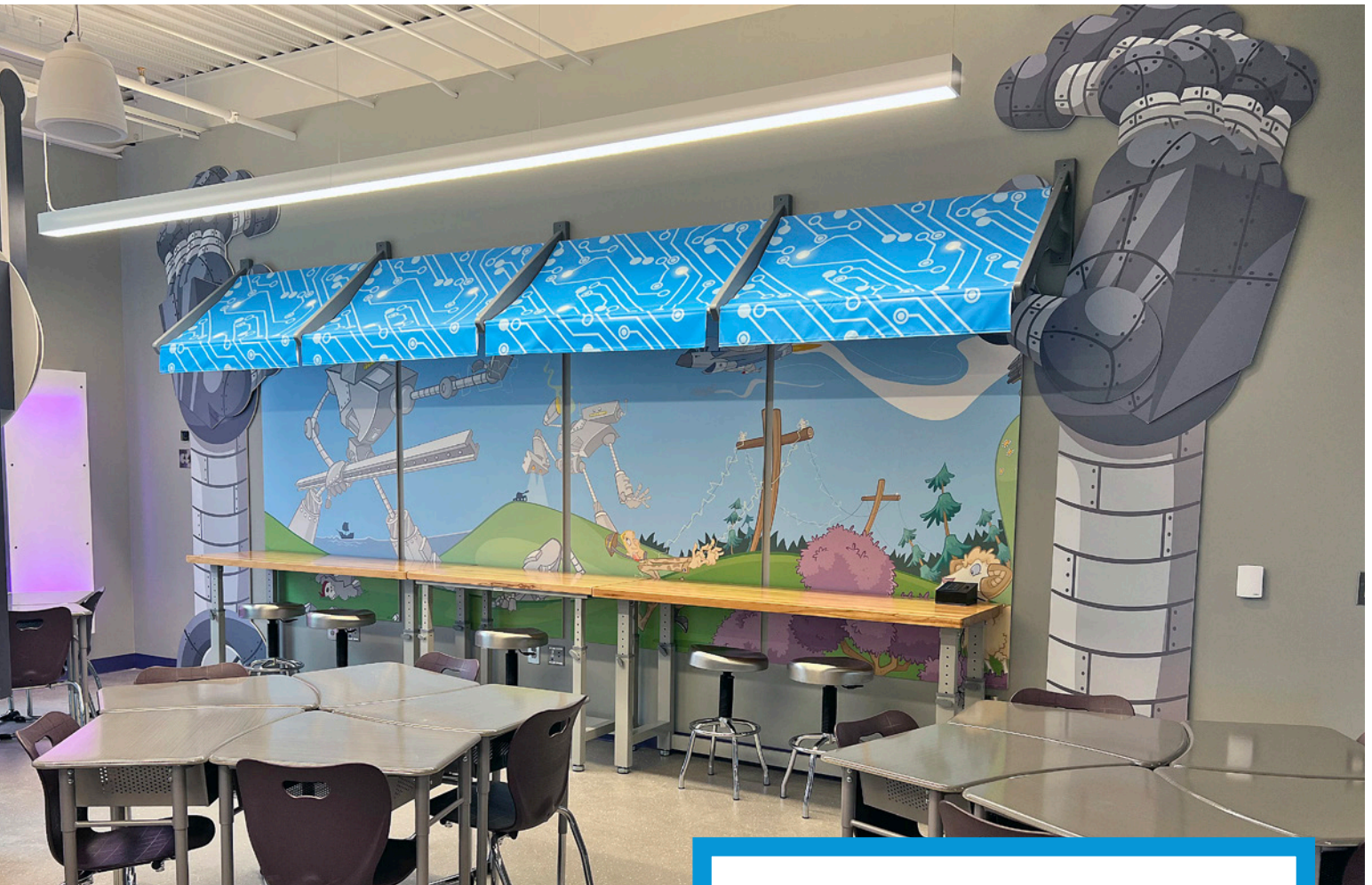
Model

Description

TTB 2 palm trees, awning, counter and seating

* For intellectual property information on patents, trademarks and copyrights contact Inventionland's legal department

Robot Tech Bar



Appearing to be supported by a pair of giant robot arms, the Robot Tech Bar features a circuit-patterned awning, and a row of work benches with solid wood on top frames a set of robot-themed art panels. The end result turns an ordinary wall into a robot adventure scene, inspiring students to imagine the technology of tomorrow. The Robot Tech Bar is designed as the perfect companion for the Inventron™ Robot themed centerpiece.

Mounting brackets and safety screws included. The brackets make them easy to install and the safety screws prevent tampering.

Model	Description
RTB	2 robot hands, awning, counter and seating

* For intellectual property information on patents, trademarks and copyrights contact Inventionland's legal department

Creativity Cabin Locker Cubby



Imagine how excited your youngest students will be when they see the Creativity Cabin Locker Cubby installation. A fantastic addition to any kindergarten classroom or preschool area, this set combines locker cubbies with a whimsical log cabin facade. The log cabin is enhanced with a whiteboard, and the area in front of the cabin is covered by a floor panel that provides a natural stage for student presentations. A set of three Inventionland art panels is included to complete the immersive effect, turning the entire installation into a perfect storytelling spot for your students.

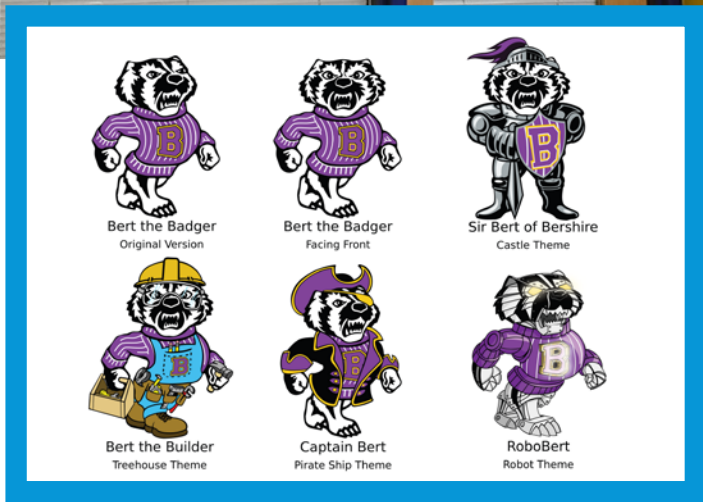


Mounting brackets and safety screws included. The brackets make them easy to install and the safety screws prevent tampering.

Model	Description
CCLC	locker cubby facade

* For intellectual property information on patents, trademarks and copyrights contact Inventionland's legal department

Custom Artwork



Bert the Badger
Original Version

Bert the Badger
Facing Front

Sir Bert of Berkshire
Castle Theme

Bert the Builder
Treehouse Theme

Captain Bert
Pirate Ship Theme

RoboBert
Robot Theme

Would you like your Innovation Lab to be unlike any other? Why not add custom artwork to your environment? We can create designs based on your school's logo, emblem or mascot. These unique images can literally be anything you choose! Anything from simply custom printing your logo or mantra as a large wall medallion to creating new artwork using your school mascot in new outfits and poses to reflect the character of your students, teachers and school, is possible.

Mounting brackets and safety screws included. The brackets make them easy to install and the safety screws prevent tampering.

Model	Description
CSLM	customizing your schools logo or mascot

* For intellectual property information on patents, trademarks and copyrights contact Inventionland's legal department

Innovation

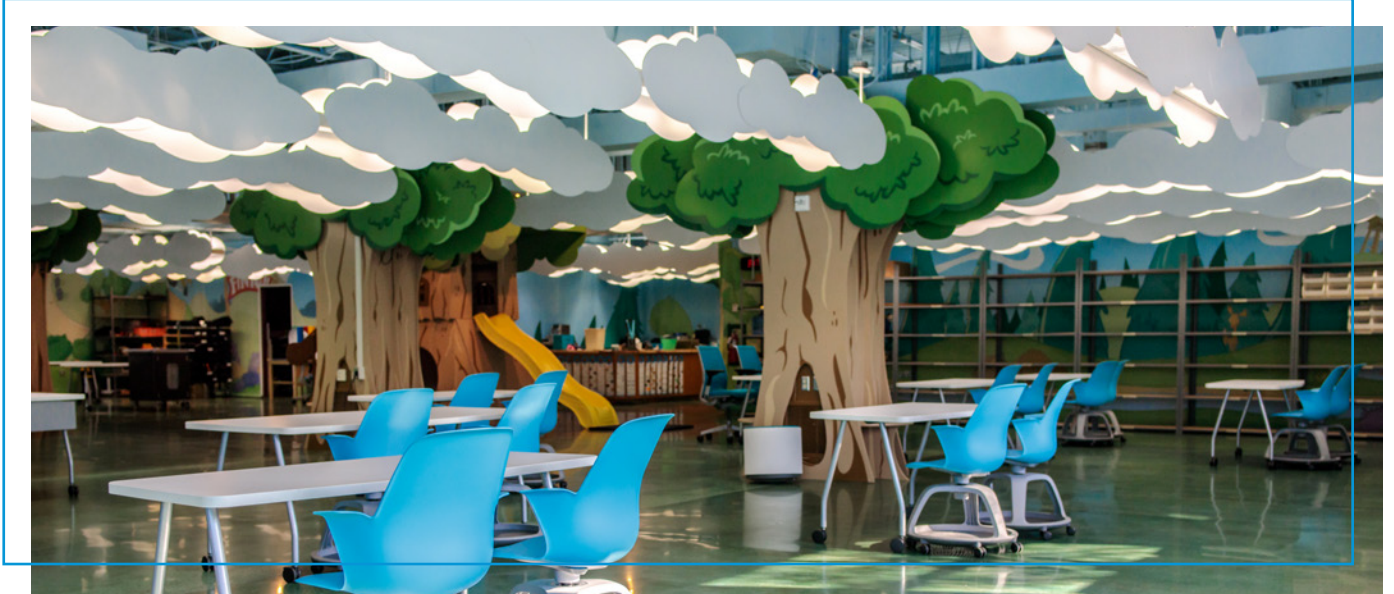
Labs[®]

Starter

Kits

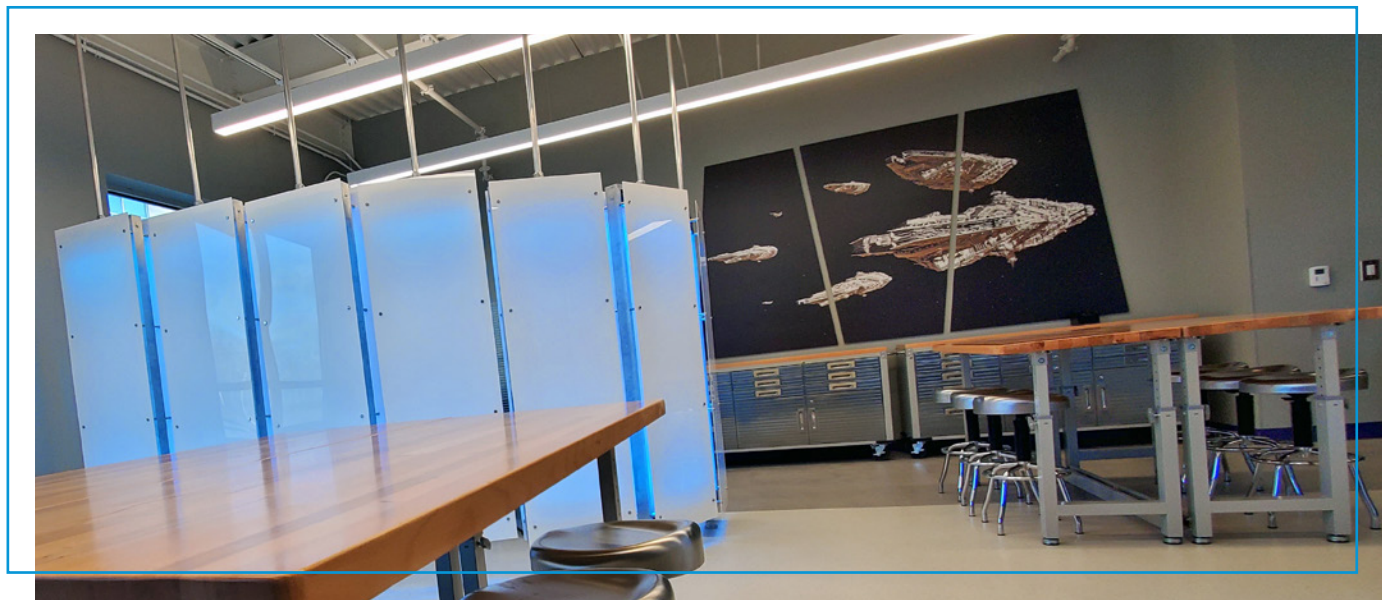
We've developed innovative tools and resources to make it easy for you to guide your students through the art of inventing, making and storytelling. With each student, you will find yourself enthusiastically engaged in meaningful, motivated and creative learning. Let us provide you with the tools and inspiration for a STEAM classroom.

Starter Kits



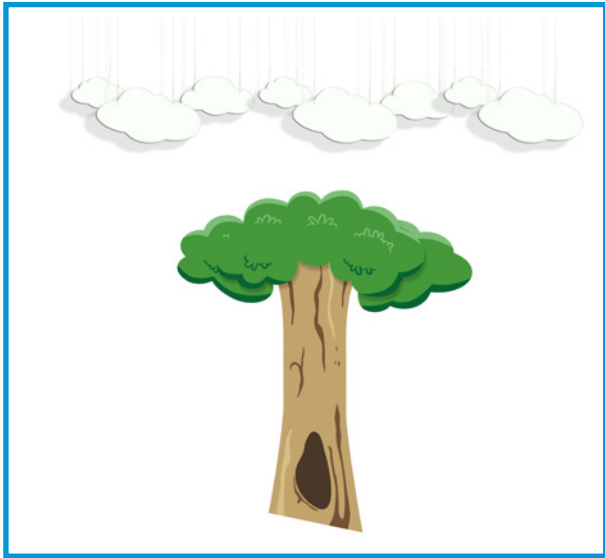
Innovation Labs® Starter Kits are an excellent way to remodel existing spaces and new school spaces. These kits contain everything you need to turn a normal classroom, or library, or hallway into an environment that will attract learners and teachers alike. If you're looking for an easy way to innovate your school, we're here to help.

Innovation Labs® Starter Kits are an excellent way to begin revitalizing your classroom or any existing school space. These kits contain just what you need to turn a normal classroom, or library, or hallway into an environment that will attract students and teachers alike. If you're looking for an easy way to innovate your school, we're here to help.



These kits will get you started and fulfill your unique needs and budget.

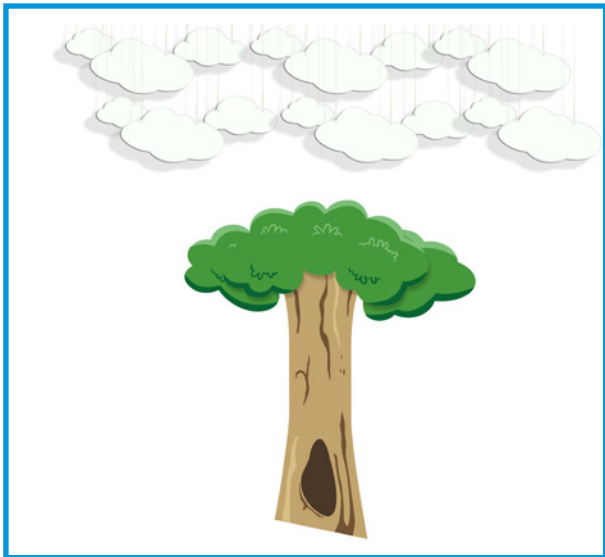
Storybook Forest™ Mini Kits



Level 1 Kit includes:

- 1 wall tree (7 foot)
- 8 ceiling clouds

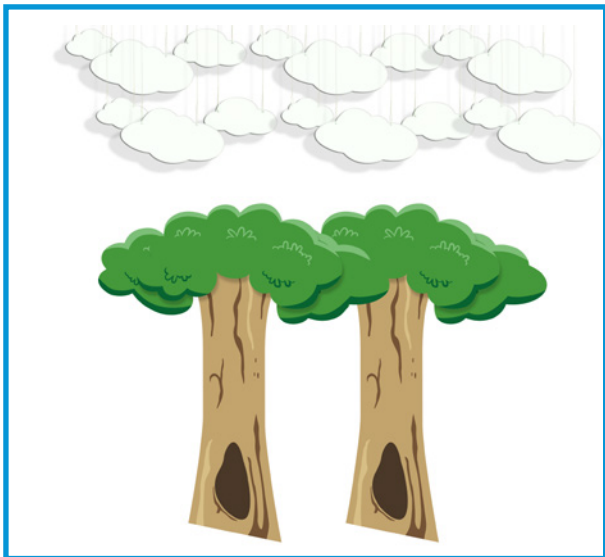
Model	Description
SBMSKL1	one mini starter kit



Level 2 Kit includes:

- 1 wall tree (7 foot)
- 16 ceiling clouds

Model	Description
SBMSKL2	one mini starter kit



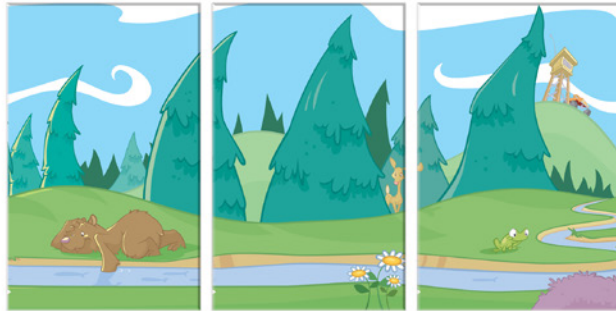
Level 3 Kit includes:

- 2 wall trees (7 foot)
- 16 ceiling clouds

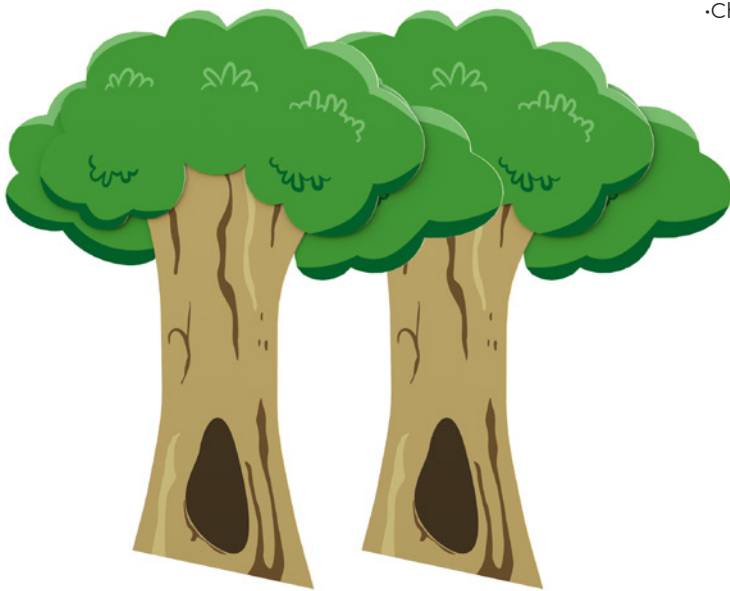
Model	Description
SBMSKL3	one mini starter kit

* For intellectual property information on patents, trademarks and copyrights contact Inventionland's legal department

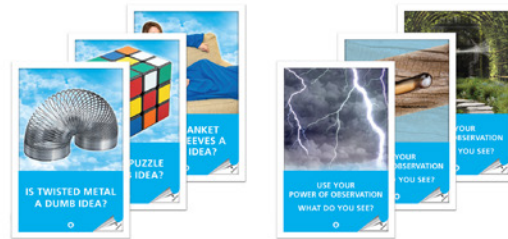
Storybook Forest™ Deluxe Kit Level 1



·Choose any 3 from our wall art collections



·Choose any 2 wall or corner trees



·Choose any 6 from our poster collections



Kit includes:

- 2 wall trees (10 foot)
- 3 themed wall art panels
- 15 ceiling clouds
- 1 Chipper Cloud ceiling cloud

Free with kit:

- 6 Peek-A-Boo® posters
- 1 Inventionland® Viewbook
- 1 Chipper Cloud book

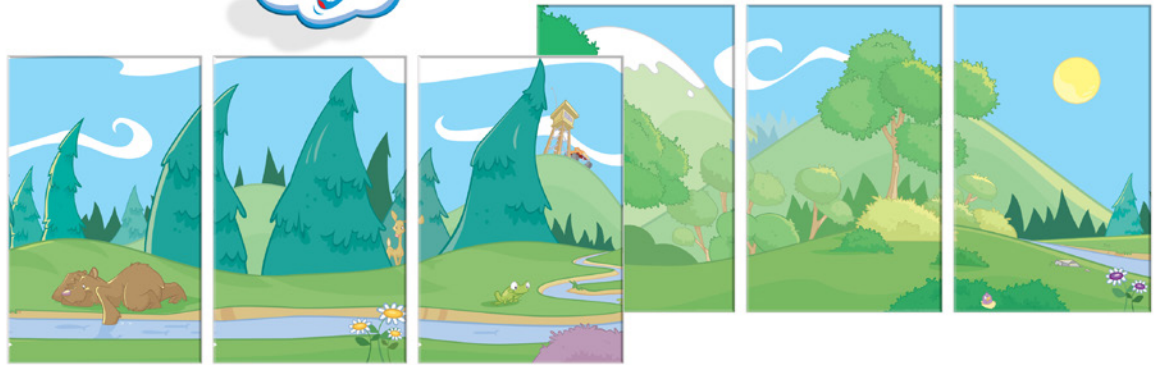
Model

Description

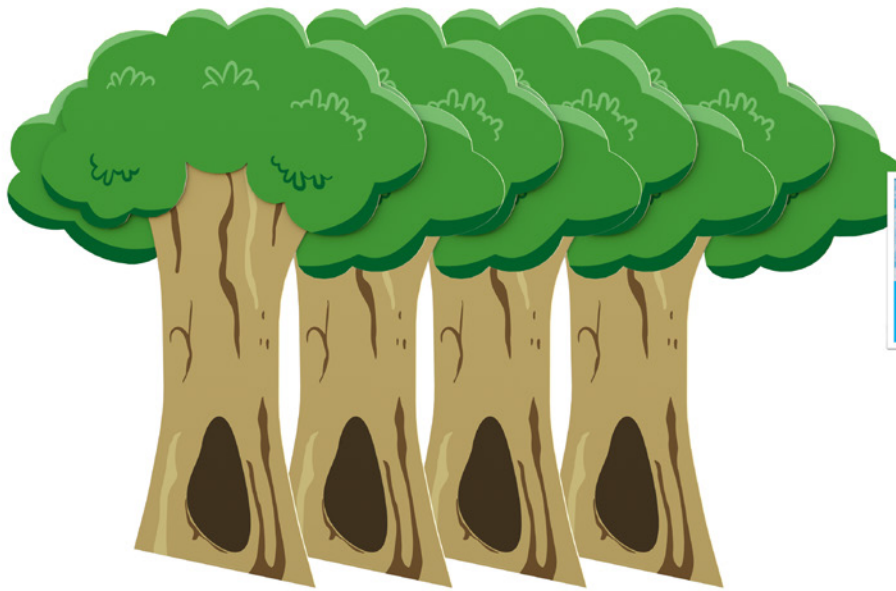
SBSKLI starter kit for one Innovation Lab

* For intellectual property information on patents, trademarks and copyrights contact Inventionland's legal department

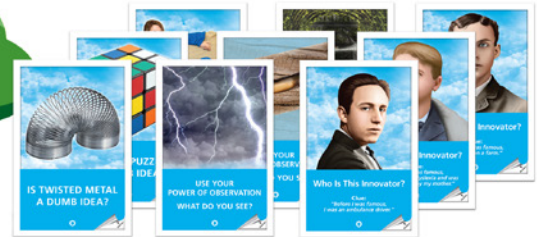
Storybook Forest™ Deluxe Kit Level 2



•Choose any 6 from our wall art collections



•Choose any 4 wall or corner trees



•Choose any 9 from our poster collections



Kit includes:

- 4 wall trees (10 foot)
- 6 themed wall art panels
- 15 ceiling clouds
- 1 Chipper Cloud ceiling cloud

Free with kit:

- 9 Peek-A-Boo® posters
- 1 Inventionland® Viewbook
- 1 Chipper Cloud book

Model

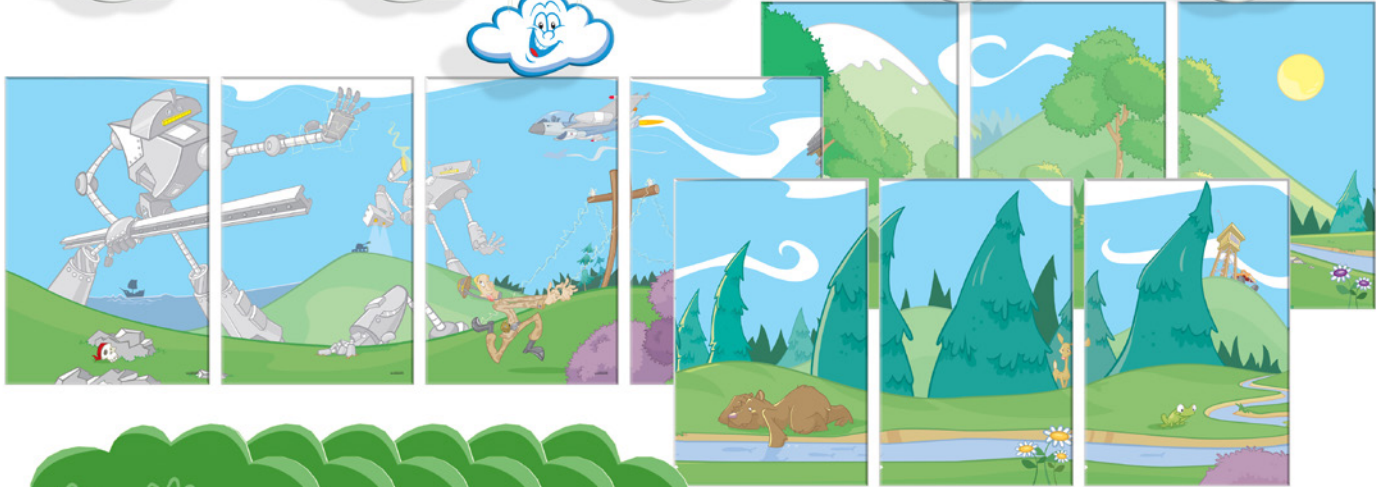
Description

SBSKL2

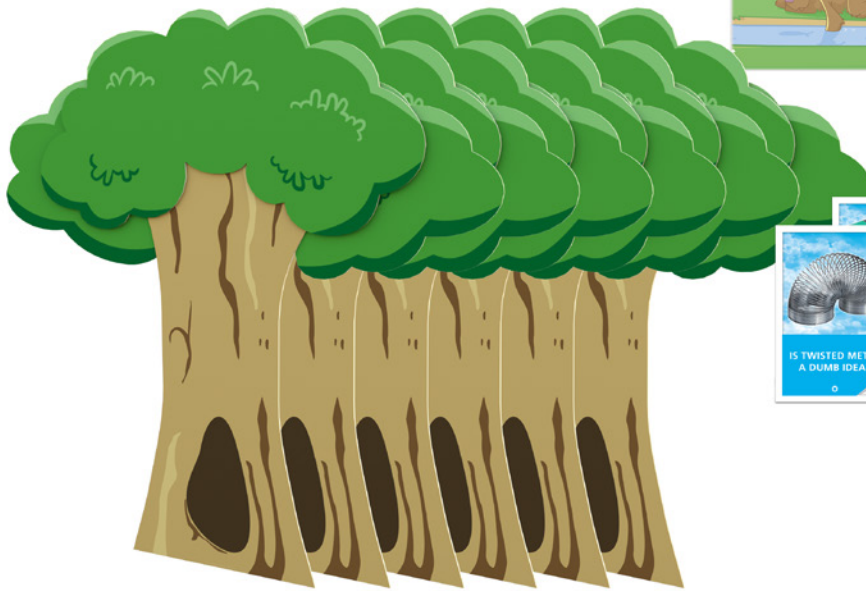
starter kit for one Innovation Lab

* For intellectual property information on patents, trademarks and copyrights contact Inventionland's legal department

Storybook Forest™ Deluxe Kit Level 3



•Choose any 10 from our wall art collections



•Choose any 6 wall or corner trees



•Choose any 12 from our poster collections



Kit includes:

- 6 wall trees (10 foot)
- 10 themed wall art panels
- 30 ceiling clouds
- 1 Chipper Cloud ceiling cloud

Free with kit:

- 12 Peek-A-Boo® posters
- 1 Inventionland® Viewbook
- 1 Chipper Cloud book

Model

Description

SBSKL3 starter kit for one Innovation Lab

* For intellectual property information on patents, trademarks and copyrights contact Inventionland's legal department

Tiki Tech Bar Mini Kits



Level 1 Kit includes:

- 1 palm tree
- 1 section of awning
- 1 themed wall art panels 4'x4'

Model	Description
TTBMSKL1	one mini starter kit



Level 2 Kit includes:

- 1 palm tree
- 2 sections of awning
- 2 themed wall art panels 4'x4'

Model	Description
TTBMSKL2	one mini starter kit



Level 3 Kit includes:

- 2 palm tree
- 2 sections of awning
- 2 themed wall art panels 4'x4'

Model	Description
TTBMSKL3	one mini starter kit

* For intellectual property information on patents, trademarks and copyrights contact Inventionland's legal department

Tiki Tech Bar Deluxe Kit Level 1



•Choose any 3 from our wall art collections

•Table and chairs sold separately



•Choose any 6 from our poster collections



Kit includes:

- 2 palm trees
- 3 themed wall art panels
- 3 sections of awning

Free with kit:

- 6 Peek-A-Boo® posters
- 1 Inventionland® Viewbook
- 1 Chipper Cloud book

Model

Description

TTBSKLI

starter kit for one Innovation Lab

* For intellectual property information on patents, trademarks and copyrights contact Inventionland's legal department

Tiki Tech Bar Deluxe Kit Level 2



•Choose any 6 from our wall art collections

•Table and chairs sold separately



•Choose any 9 from our poster collections



Kit includes:

- 4 palm trees
- 6 themed wall art panels
- 3 sections of awning

Free with kit:

- 9 Peek-A-Boo® posters
- 1 Inventionland® Viewbook
- 1 Chipper Cloud book

Model

Description

TTBSKL2 starter kit for one Innovation Lab

* For intellectual property information on patents, trademarks and copyrights contact Inventionland's legal department

Tiki Tech Bar Deluxe Kit Level 3

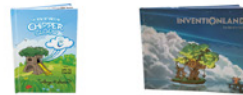


•Choose any 10 from our wall art collections

•Table and chairs sold separately



•Choose any 12 from our poster collections



Kit includes:

- 6 palm trees
- 10 themed wall art panels
- 3 sections of awning

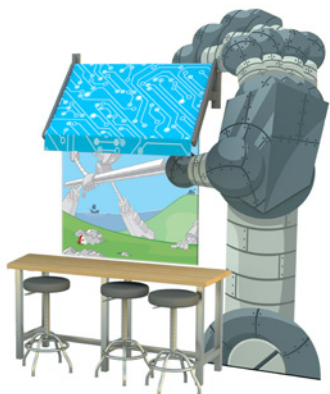
Free with kit:

- 12 Peek-A-Boo® posters
- 1 Inventionland® Viewbook
- 1 Chipper Cloud book

Model	Description
TTBSKL3	starter kit for one Innovation Lab

* For intellectual property information on patents, trademarks and copyrights contact Inventionland's legal department

Robot Tech Bar Mini Kits



•Table and chairs sold separately

Level 1 Kit includes:

- 1 robot hand
- 1 section of awning
- 1 themed wall art panels 4'x4'

Model	Description
RTBMSKL1	one mini starter kit



•Table and chairs sold separately

Level 2 Kit includes:

- 1 robot hand
- 2 sections of awning
- 2 themed wall art panels 4'x4'

Model	Description
RTBMSKL2	one mini starter kit



•Table and chairs sold separately

Level 3 Kit includes:

- 2 robot hand
- 2 sections of awning
- 2 themed wall art panels 4'x4'

Model	Description
RTBMSKL3	one mini starter kit

* For intellectual property information on patents, trademarks and copyrights contact Inventionland's legal department

Robot Tech Bar Deluxe Kit Level 1



•Choose any 3 from our wall art collections

•Table and chairs sold separately



•Choose any 6 from our poster collections



Kit includes:

- 2 robot hands
- 3 themed wall art panels
- 3 sections of awning

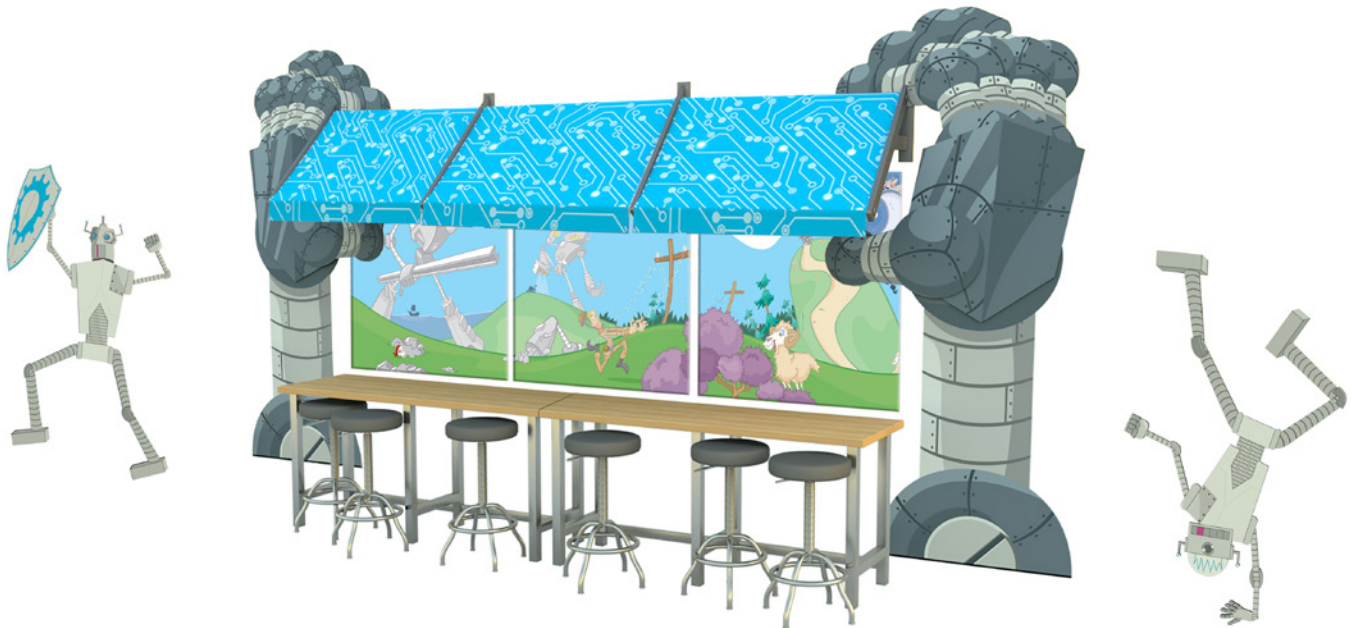
Free with kit:

- 6 Peek-A-Boo® posters
- 1 Inventionland® Viewbook

Model	Description
RTBSKL1	starter kit for one Innovation Lab

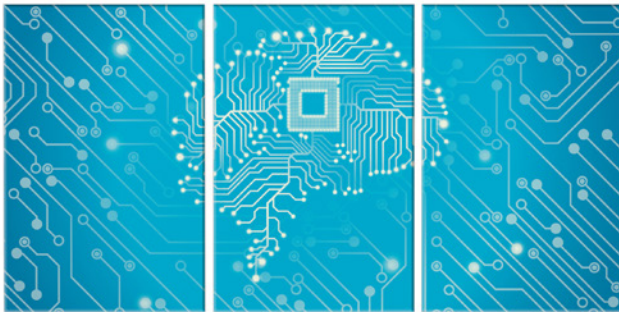
* For intellectual property information on patents, trademarks and copyrights contact Inventionland's legal department

Robot Tech Bar Deluxe Kit Level 2



•Choose any 6 from our wall art collections

•Table and chairs sold separately



•Choose any 9 from our poster collections



Kit includes:

- 2 robot hands
- 6 themed wall art panels
- 3 sections of awning
- 2 dancing robots

Free with kit:

- 9 Peek-A-Boo® posters
- 1 Inventionland® Viewbook

Model

Description

RTBSKL2

starter kit for one Innovation Lab

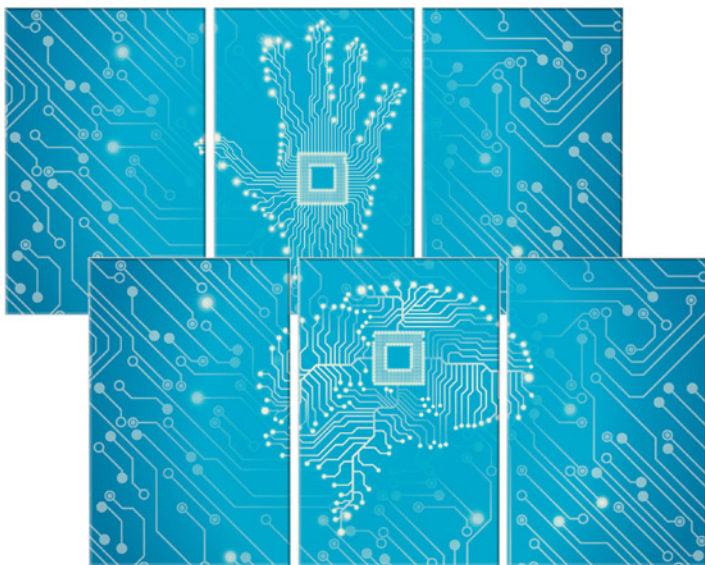
* For intellectual property information on patents, trademarks and copyrights contact Inventionland's legal department

Robot Tech Bar Deluxe Kit Level 3



•Choose any 9 from our wall art collections

•Table and chairs sold separately



•Choose any 12 from our poster collections



Kit includes:

- 2 robot hands
- 9 themed wall art panels
- 3 sections of awning
- 2 dancing robots
- 4 wall mount dry-erase light panels

Free with kit:

- 12 Peek-A-Boo® posters
- 1 Inventionland® Viewbook

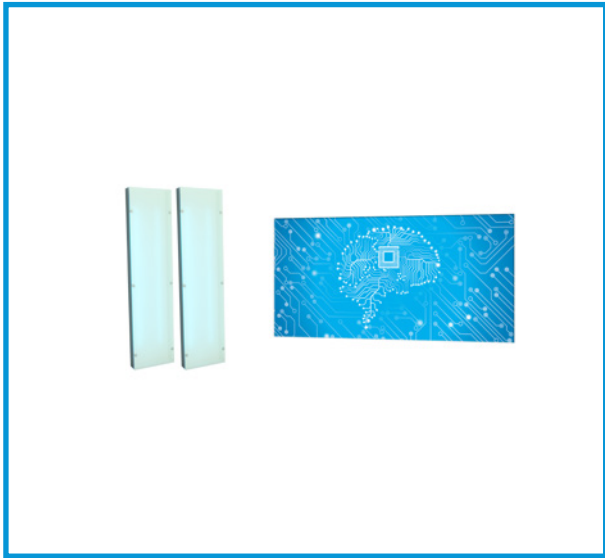
Model

Description

RTBSKL3 starter kit for one Innovation Lab

* For intellectual property information on patents, trademarks and copyrights contact Inventionland's legal department

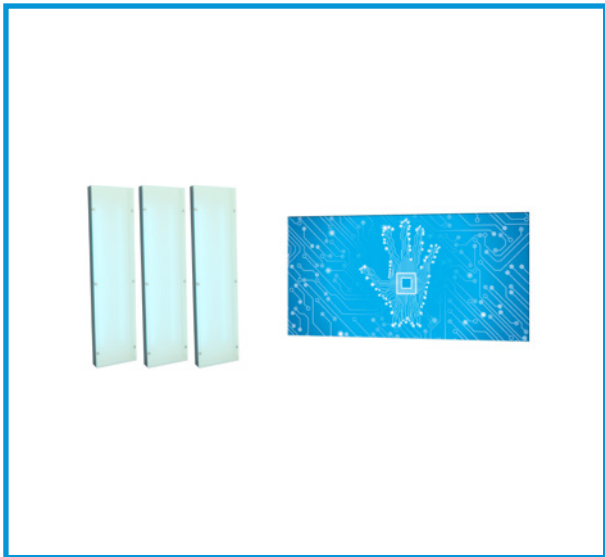
Bright Ideaz™ Mini Kits



Level 1 Kit includes:

- 2 wall mount dry-erase light panels
- 1 themed wall art panel 4'x8'

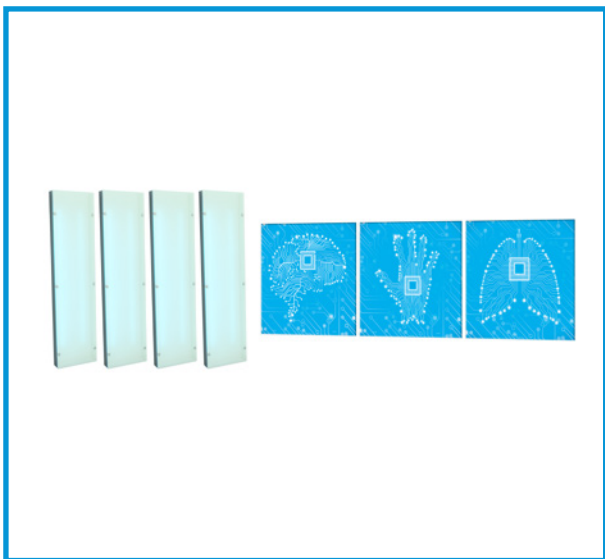
Model	Description
BIMSKL1	one mini starter kit



Level 2 Kit includes:

- 3 wall mount dry-erase light panels
- 1 themed wall art panel 4'x8'

Model	Description
BIMSKL2	one mini starter kit



Level 3 Kit includes:

- 4 wall mount dry-erase light panels
- 3 themed wall art panels 4'x4'

Model	Description
BIMSKL3	one mini starter kit

* For intellectual property information on patents, trademarks and copyrights contact Inventionland's legal department

Bright Ideaz™ Deluxe Kit Level 1



•Table and chairs sold separately



•Choose any 3 from our wall art collections



•Choose any 6 from our poster collections



Kit includes:

- 7 freestanding dry-erase light panels
- 3 themed wall art panels

Free with kit:

- 6 Peek-A-Boo® posters
- 1 Inventionland® Viewbook

Model	Description
BISKL1	starter kit for one Innovation Lab

BISKL1 starter kit for one Innovation Lab

* For intellectual property information on patents, trademarks and copyrights contact Inventionland's legal department

Bright Ideaz™ Deluxe Kit Level 2



•Table and chairs sold separately



•Choose any 6 from our wall art collections



•Choose any 9 from our poster collections



Kit includes:

- 7 freestanding dry-erase light panels
- 6 themed wall art panels
- 4 wall mount dry-erase light panels

Free with kit:

- 9 Peek-A-Boo® posters
- 1 Inventionland® Viewbook

Model	Description
-------	-------------

BISKL2	starter kit for one Innovation Lab
--------	------------------------------------

* For intellectual property information on patents, trademarks and copyrights contact Inventionland's legal department

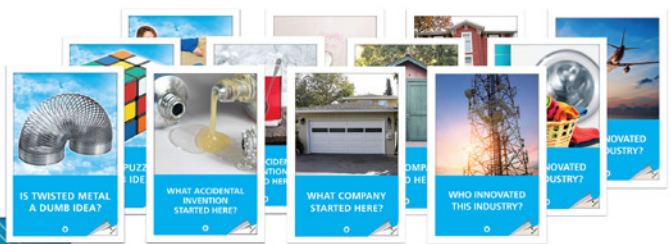
Bright Ideaz™ Deluxe Kit Level 3



•Table and chairs sold separately



•Choose any 9 from our wall art collections



•Choose any 12 from our poster collections



Kit includes:

- 14 freestanding dry-erase light panels
- 9 themed wall art panels

Free with kit:

- 12 Peek-A-Boo® posters
- 1 Inventionland® Viewbook

Model	Description
-------	-------------

BISKL3	starter kit for one Innovation Lab
--------	------------------------------------

* For intellectual property information on patents, trademarks and copyrights contact Inventionland's legal department

Post Hiders,

Corners

and

Clouds

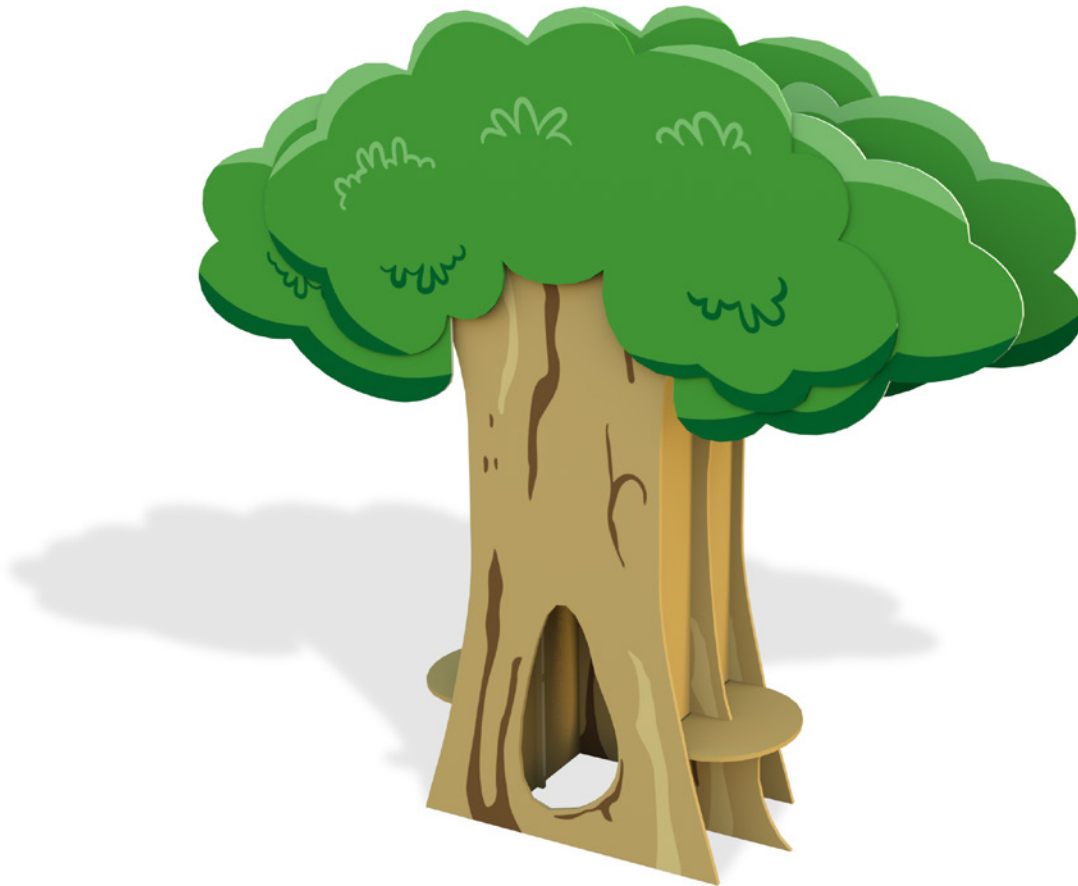
Really add character to your learning space by covering those clunky pillars and posts with some of our themed designs. Dress up those corners too, then make your light fixtures and ceiling come to life with some of our clouds.



Tree canopy can be flipped to accommodate ceiling beams



Inventionland® Tree Pillar Wrap (with seating)



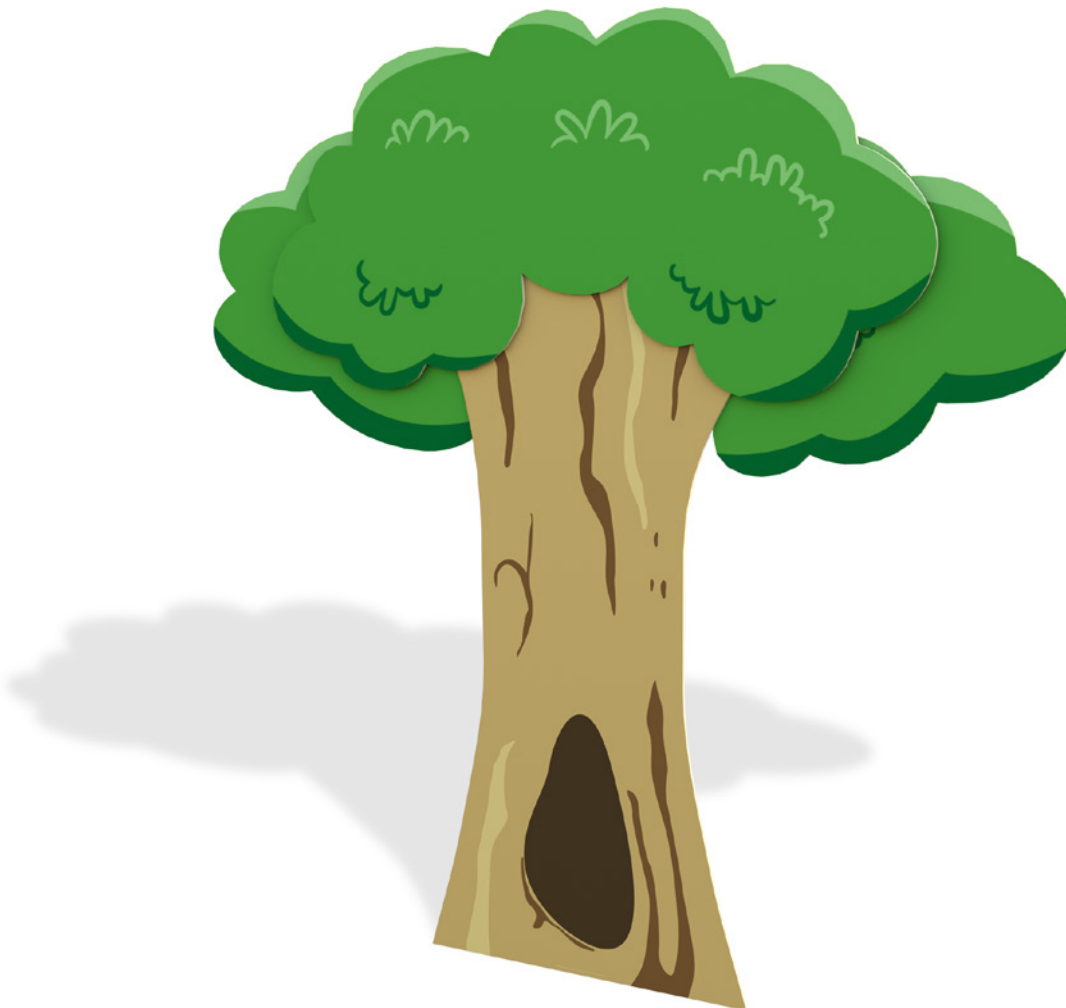
Inventionland Tree Pillar Wraps are designed to be easy to assemble around any pillar, beam or post up to 2 x 2 feet. They come with a complete set of instructions and can easily be installed by your maintenance department. The height of the tree can be adjusted from 8 to 10 feet to accommodate different ceiling heights. The tree canopy can be flipped upside down to accommodate ceiling beams. The tree comes with an opening to allow pre-existing electrical outlets to be used as usual. If there are no outlets, the tree ships with a hole opening cover for a clean look. Each pillar tree comes with two built-in seats so that students can read under the tree or pull a table over to collaborate.

Mounting brackets and safety screws included. The brackets make them easy to install and the safety screws prevent tampering.

Model	Description	D"	W"	H"
ILTPW	Inventionland tree pillar wrap (with seating)	30	144	104 to 120
ILTPWOS	Inventionland tree pillar wrap (without seating)	30	144	104 to 120



Inventionland® Wall Tree (against wall)



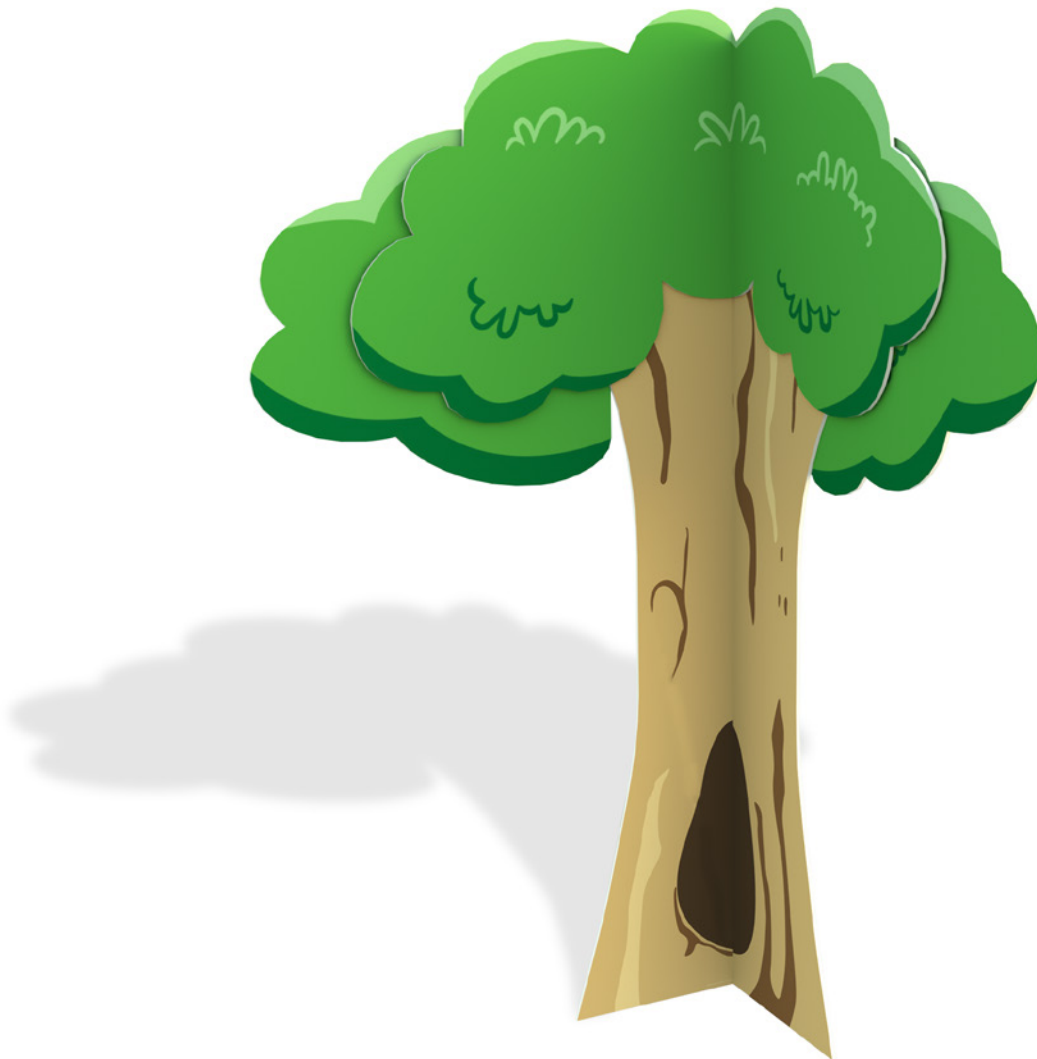
“Plant” a tree onto any wall to create wonderful force effects . Any maintenance department can easily install a tree with basic tools. The tree canopy can be installed in its normal position as shown above or turned upside down to accommodate a beam. The tree is adjustable to fit ceilings from 8 to 10 feet or higher. Comes either with or without trunk hole for receptacles.

Mounting brackets and safety screws included. The brackets make them easy to install and the safety screws prevent tampering.

Model	Description	D”	W”	H”
ILWTF	Inventionland wall tree facade	1.625	144	104 to 120



Inventionland® Corner Tree (inside and out)



These corner trees are perfect on any inside or outside corner and really add character to your space design. Corners can be tough to cover, but these trees are versatile and easy to install. Comes standard with or without trunk hole for receptacles.

Mounting brackets and safety screws included. The brackets make them easy to install and the safety screws prevent tampering.

Model	Description	D"	W"	H"
ILCTF	Inventionland corner tree facade	52 to 64	52 to 64	104 to 120



E302
PBL



Island Palm Tree (against wall)



If you go with the Discovery™ Pirate Ship theme, then you will want to have some of these island palms in your space. They come in two different heights and add a special character to your space.

Mounting brackets and safety screws included. The brackets make them easy to install and the safety screws prevent tampering.

Model	Description	D"	W"	H"
ILPTS	island palm tree (shorter)	1.625	60	104
ILPTT	island palm tree (taller)	1.625	60	116



Who is This Innovator?
Drew Baskin
Drew Baskin is a...
Drew Baskin is a...

Who is This Innovator?
Drew Baskin
Drew Baskin is a...
Drew Baskin is a...

WHAT ACCIDENTAL INVENTION STARTED HERE?
Drew Baskin
Drew Baskin is a...
Drew Baskin is a...

Who is This Innovator?
Drew Baskin
Drew Baskin is a...
Drew Baskin is a...

Who is This Innovator?
Drew Baskin
Drew Baskin is a...
Drew Baskin is a...

WHAT COMPANY STARTED HERE?
Drew Baskin
Drew Baskin is a...
Drew Baskin is a...

WHAT COMPANY STARTED HERE?
Drew Baskin
Drew Baskin is a...
Drew Baskin is a...

Who is This Innovator?
Drew Baskin
Drew Baskin is a...
Drew Baskin is a...

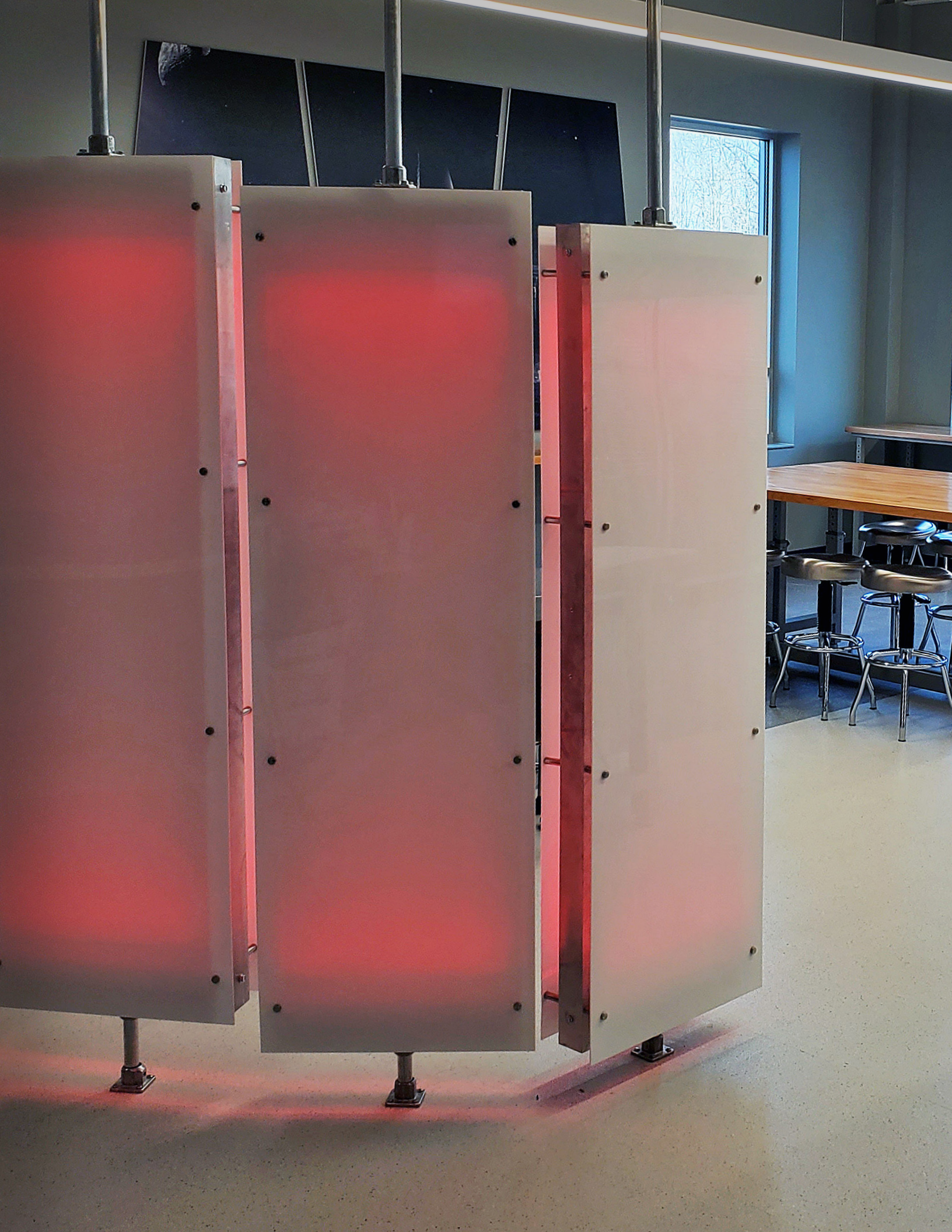
Ceiling Clouds (hanging / 3 sizes)



A cloud-filled sky enables your students to feel the joy and freedom of being outside even when still inside their learning space. They are designed for multiple hanging methods and will attach to roof trusses, on existing ceiling grids, and over existing light fixtures.

Mounting brackets and safety screws included. The brackets make them easy to install and the safety screws prevent tampering.

Model	Description	D"	W"	H"
CCS	ceiling clouds (small)	.125	36	19.25
CCM	ceiling clouds (medium)	.125	45	19.75
CCL	ceiling clouds (large)	.125	54	24.625



Dry-Erase Light Panel (2-sided)



This wireless RGB remote uses the IR controller to control the color changing LED strip lights.



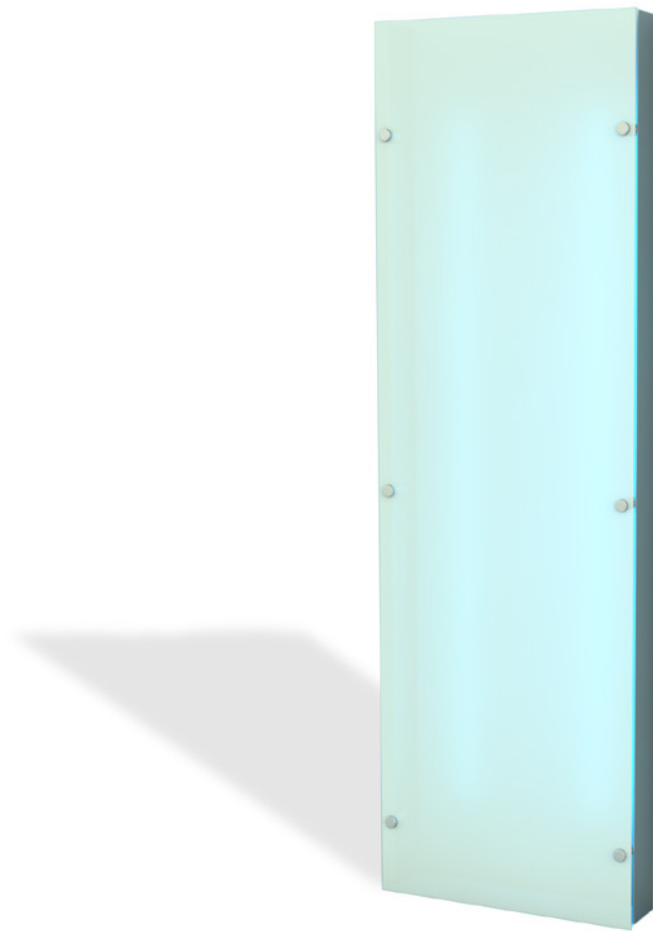
This double-sided, dry-erase light panel is great for STEM/STEAM labs, your art department, classrooms or informal spaces. Every brainstorming area should have at least one. These panels change color and contain multi-colored LED lights that can be controlled remotely or by an Android tablet with an installed app (compatible with Alexa and Google Assistant). It's easy to install and plugs into a standard 110-120V wall outlet.

Mounting brackets and safety screws included. The brackets make them easy to install and the safety screws prevent tampering.

Model	Description	D"	W"	H"
DELP2	dry-erase light panel (2-sided)	7	24	72



Dry-Erase Light Panel (1-sided)



This wireless RGB remote uses the IR controller to control the color changing LED strip lights.



This one-sided, dry-erase light panel is great for STEM/STEAM labs, your art department, classrooms or informal spaces. Every brainstorming area should have at least one. These panels change color and contain multi-colored LED lights that can be controlled remotely or by an Android tablet with an installed app (compatible with Alexa and Google Assistant). It's easy to install and plugs into a standard 110-120V wall outlet.

Mounting brackets and safety screws included. The brackets make them easy to install and the safety screws prevent tampering.

Model	Description	D"	W"	H"
DELP1	dry-erase light panel (1-sided)	5	24	72

Inventing

Inventing

HTML

- <html> beginning of
- <p> open parag
- </p> close
- <body> open bo
- </body> close
- <h1> open he
- </h1> close



“Inventing” Light Panel (2-sided)



This wireless RGB remote uses the IR controller to control the color changing LED strip lights.



The inventing, making and storytelling light panels go hand-in-hand with the 3 main Inventionland course categories. This double-sided, dry-erase light panel is great for STEM/STEAM labs, your art department, classrooms or informal spaces. Every brainstorming area should have at least one. These panels change color and contain multi-colored LED lights that can be controlled remotely or by an Android tablet with an installed app (compatible with Alexa and Google Assistant). It's easy to install and plugs into a standard 110-120V wall outlet.

Mounting brackets and safety screws included. The brackets make them easy to install and the safety screws prevent tampering.

Model	Description	D"	W"	H"
ILP2	"inventing" light panel (2-sided)	7	24	72

Making



“Making” Light Panel (2-sided)



This wireless RGB remote uses the IR controller to control the color changing LED strip lights.



The inventing, making and storytelling light panels go hand-in-hand with the 3 main Inventionland course categories. This double-sided, dry-erase light panel is great for STEM/STEAM labs, your art department, classrooms or informal spaces. Every brainstorming area should have at least one. These panels change color and contain multi-colored LED lights that can be controlled remotely or by an Android tablet with an installed app (compatible with Alexa and Google Assistant). It's easy to install and plugs into a standard 110-120V wall outlet.

Mounting brackets and safety screws included. The brackets make them easy to install and the safety screws prevent tampering.

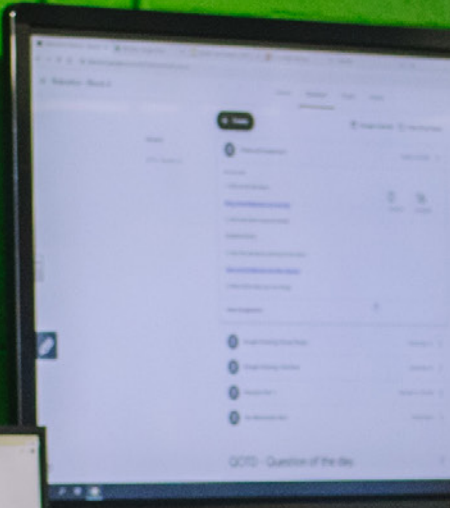
Model	Description	D"	W"	H"
MLP2	"making" light panel (2-sided)	7	24	72

EVOLUTION OF WHEELS
THERE'S ALWAYS A BETTER WAY

OFFICE



Storytelling



“Storytelling” Light Panel (2-sided)



This wireless RGB remote uses the IR controller to control the color changing LED strip lights.



The inventing, making and storytelling light panels go hand-in-hand with the 3 main Inventionland course categories. This double-sided, dry-erase light panel is great for STEM/STEAM labs, your art department, classrooms or informal spaces. Every brainstorming area should have at least one. These panels change color and contain multi-colored LED lights that can be controlled remotely or by an Android tablet with an installed app (compatible with Alexa and Google Assistant). It's easy to install and plugs into a standard 110-120V wall outlet.

Mounting brackets and safety screws included. The brackets make them easy to install and the safety screws prevent tampering.

Model	Description	D"	W"	H"
STLP2	"storytelling" light panel (2-sided)	7	24	72

Our Promise to You!

Our Products and Services Actively Inspire Creativity and Develop Problem-Solving Skills



Innovation

We will continue to listen and collaborate with our district leaders and teachers to help create furnishings that attract learners to spaces.



Hand-in-hand support

We hold hands with you through the process so you feel comfortable.



Durability and value

We do exhaustive research and development to figure out the best materials and manufacturing methods so we can deliver durable products that are priced reasonably.



Exploration

We are on a never-ending quest to learn everything possible about what attracts and distracts learners.



Mindfulness

We build beautiful furnishings that are designed to inspire a healthy mind and planet.



Best warranty

We stand by our innovative furnishings and offer a limited lifetime warranty.

Let's begin:

It's easy to get started today!

Call us at **1.800.371.6413** or...

Come visit us in person. We help you plan your trip and send you your very own golden ticket to tour Inventionland.
(Sign up on our website under "About Us")

Take a virtual tour with us and see the one and only Inventionland, the place that inspired it all.

(Set up through tour button on our website under "About Us")

www.inventionlandeducation.com

**We love to create great experiences and
look forward to working with you!**



@invent2educate



@inventionlandedu

Follow us on social media

Tours and Field Trips



Tour Inventionland and feel the creativity inside America's largest invention factory.

Come and experience our 67,000-square foot immersive environment where hundreds of our original products were invented. Adults and



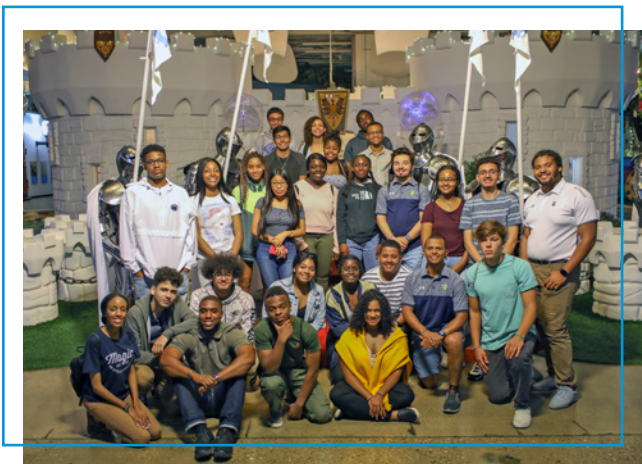
children are invited to join us — in person or virtually — to discover where great ideas become innovative new products.



*Themed tours and field trips to Inventionland are an amazing way to inspire creativity. We offer 4 different types of tours: **Story Tour, Factory Tour, InvenTour™** and a **Career Tour.***



Fun tours for families, school groups and clubs. Available in person and virtually!



*Tour times run from 60 to 90 minutes, but there's no rush—we want you to enjoy your experience with us. With so many possibilities, we can work with you to customize your day. So call us today and schedule your visit! **800-371-6413.***

SPECIFICATIONS EXHIBIT

EXPANDED PVC

TYPICAL PHYSICAL PROPERTIES*	UNITS	ASTM	Expanded PVC
Physical			
Density	g/cm ³	D 792	0.58
Water Absorption	%	D 570	0.15 - 0.30
Hunter Whiteness Index	-	-	85
Surface Energy	Dyne	-	38
Hardness	Shore D	D 224	55
Mechanical			
Tensile Strength	psi	D 638	2,256-3,000
Flexural Strength	psi	D 790	3,755
Tensile Modulus	Psi	D 638	144,000—232,000
Flexural Modulus	psi	D 790	170,000
Screw Hold	psi	D 1761	17.0 - 300
Izod Impact	ft-lb/in	D 256	0.69
Thermal			
Heat Deflection Temp (264 psi)	°F	D 648	181
Coefficient of Linear Expansion	in/in/°F	D 696	2.3 X 10 ⁻⁵
Vicat Softening Point	°F	D 1525	168
Thermal Resistance R (0.5" Thick)	R	C 518	.948
Flammability Ratings			
Flame Spread Index	-	E 84	Class A
Vertical Burn Test	-	UL 94	V-0
Fire Foam Test	-	UL 1975	Passed / Classified
Oil Canning (@140)	°f	D648	Passed
Electrical			
Dielectric Strength	kV/cm	D 194	72
Compliances			
* Information applies to 3MM - 12MM material	-	-	FDA, RoHS, REACH

INVENTIONLAND® LIMITED LIFETIME WARRANTY

The following Inventionland® warranty applies to products shipped after January 1, 2022.

Inventionland® promises to repair or replace any Inventionland® brand product or component that is substantially defective (loss of serviceability) in material or workmanship for one year and lifetime for metal components and hanging panels for the original purchaser, or, at our election, to give credit up to the invoice price of the product only. This is your sole and exclusive remedy for products found by Inventionland® to be defective. This warranty, which runs from the date of shipment, is subject to the limitations, exclusions, and other provisions below.

Inventionland® may repair or replace, at its sole discretion, any portion of the subject product that proves to be defective under the terms of this limited warranty at no further cost to the buyer. Inventionland® shall be liable under this limited warranty only for the cost or, at its option, the repair or replacement of defective products. Inventionland® will not pay labor costs associated with repairs or replacements. All incidental or consequential damages that may arise, including, but not limited to, lost profits, personal property damage, and third-party liabilities, are hereby expressly excluded. Likewise, Inventionland® will not be responsible for any damage to the customer's property caused by the incompatibility of the product with the customer's walls, ceilings, flooring and other customer property.

Exclusions:

This warranty does not apply and no other warranty applies to:

- Normal wear and tear, which are to be expected over the course of ownership.
- Defects caused by abusive or abnormal use of the product.
- Damage caused by the carrier in transit, which will be handled under separate terms.
- Modifications or attachments to the product that are not approved by Inventionland®.
- Products that were not installed, used or maintained in accordance with product instructions and warnings.

Inventionland® products are not intended or warranted for outdoor use. In addition, some natural color variations occurring in plastics, laminates, paints, or other natural materials are inherent to their character and cannot be avoided. Therefore, they are not considered defects. Inventionland® does not warrant the colorfastness or matching of colors, grains, or textures of such materials. Customer's own materials selected by and used at the request of a user are not warranted.

Warranty Period:

- Lifetime warranty on wall cleats.
- Lifetime warranty on light panel aluminum frames.
- One year on all electrical components.
- One year on dry-erase panels.

Please contact Inventionland® at 1-800-371-6413 if you have further questions.

Innovation Labs®

Inspiring the next
generation of innovators.



INVENTIONLAND®
EDUCATION

inventionlandeducation.com · 585 Alpha Dr, Pittsburgh, PA 15238
info@inventionlandeducation.com · **1-800-371-6413**

© MMXXII Inventionland Education