

# THE SNOWMOBILE



---

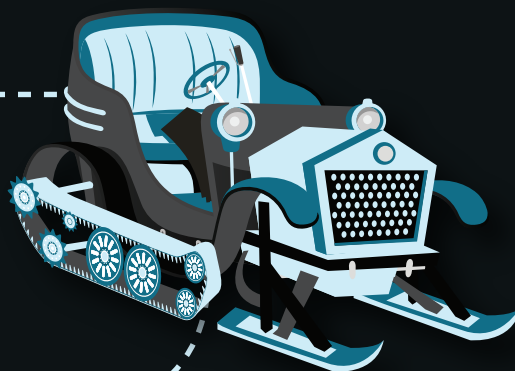
*Throughout this article, we've focused exclusively on Olympic winter sports, but there's one more popular one not to appear: snowmobiling.*

---



The snowmobile began as the motor sleigh in 1915. Ray H. Muscott of Michigan received the initial patent for snow-vehicles using the front skis and rear tracks still commonly used today.

Model Ts were outfitted with new undercarriage tracks and sleighs, copying the design.



They were primarily used for rural mail delivery before becoming a transportation method and recreational activity.