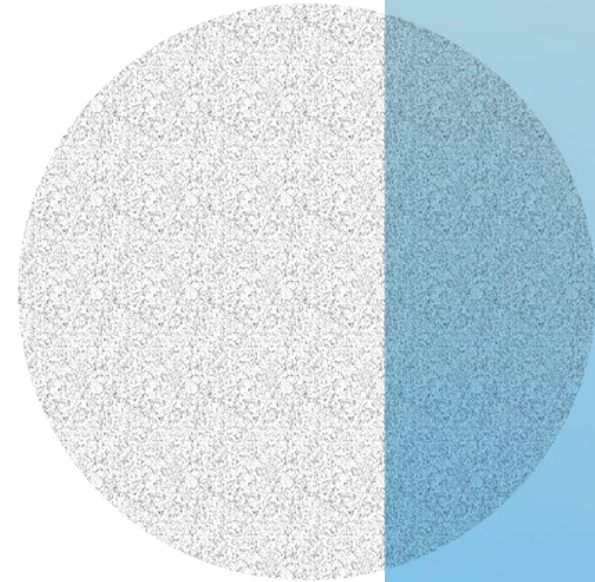


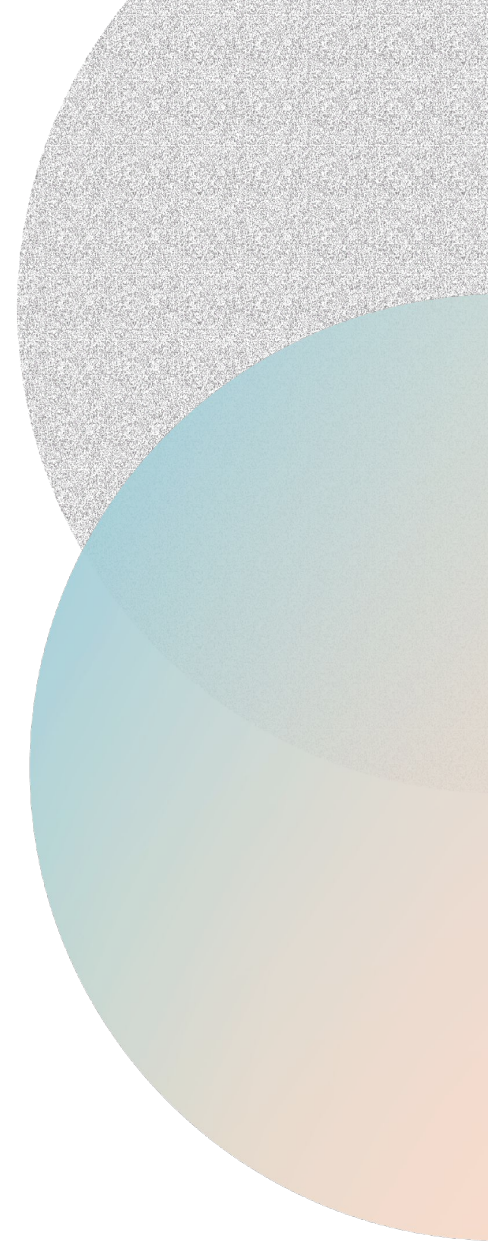
Navigating What's Next

Steelcase Education Presents for Inventionland, May 26, 2020

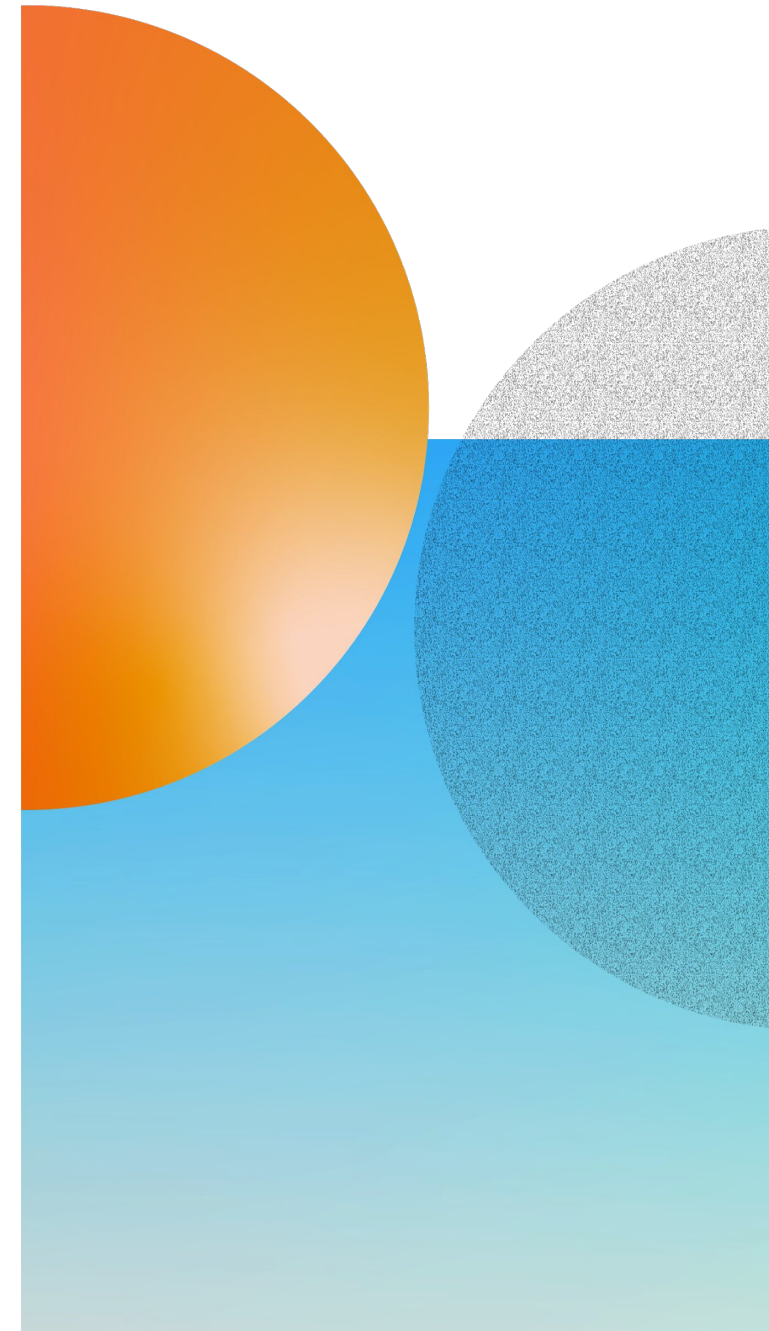
What is your biggest concern as students, educators and staff return to school?



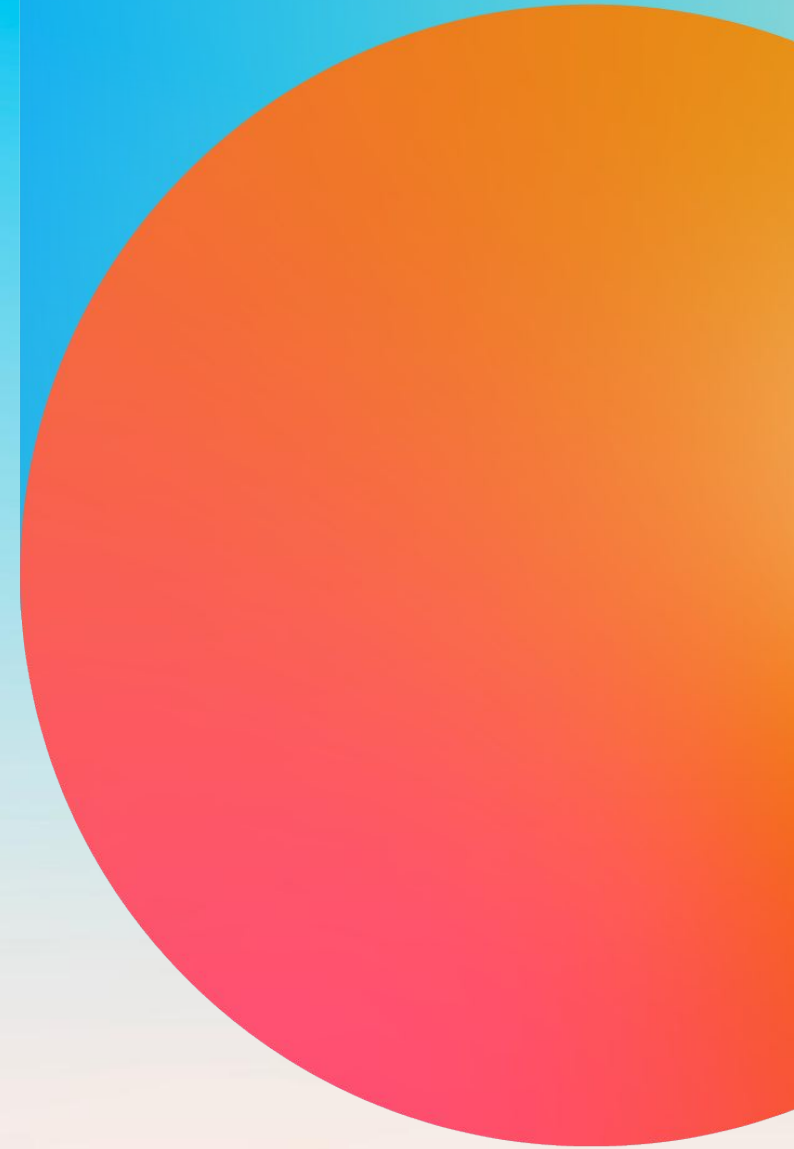
What expectations do you think students, educators and staff will have when they return to school?



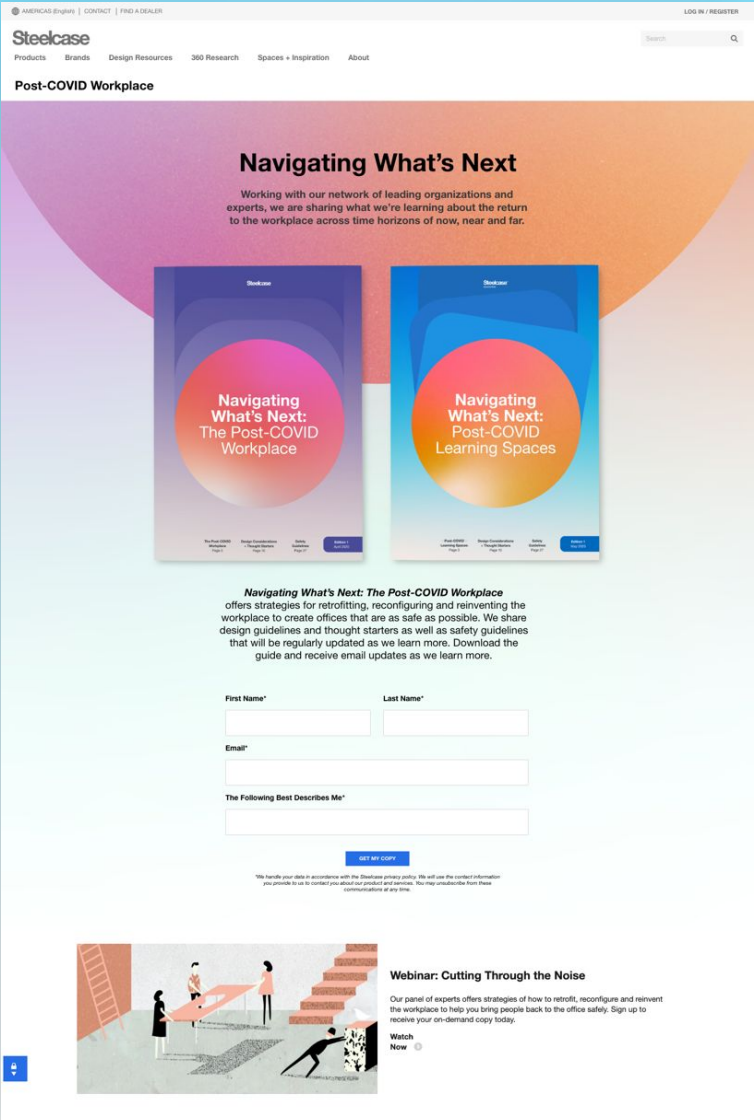
What changes or protocols do you see happening immediately?



Getting People Back to Schools Safely



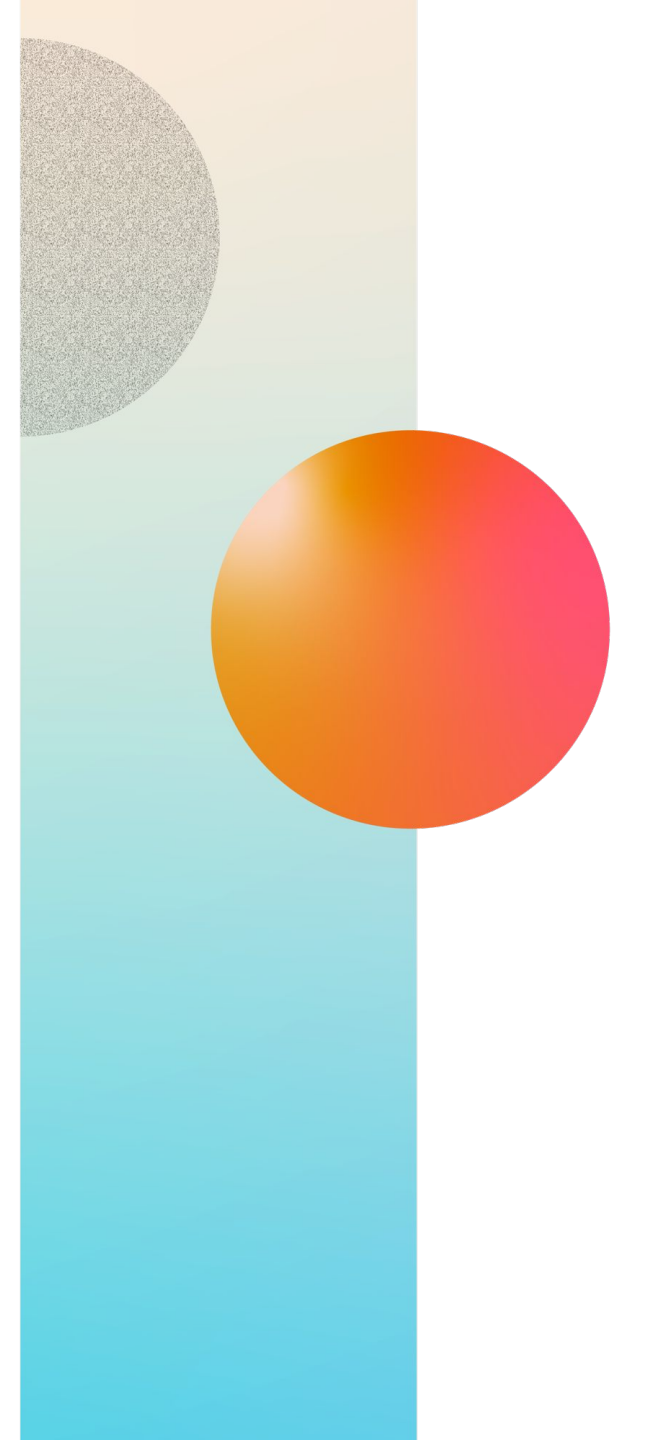
Post-COVID Learning Spaces



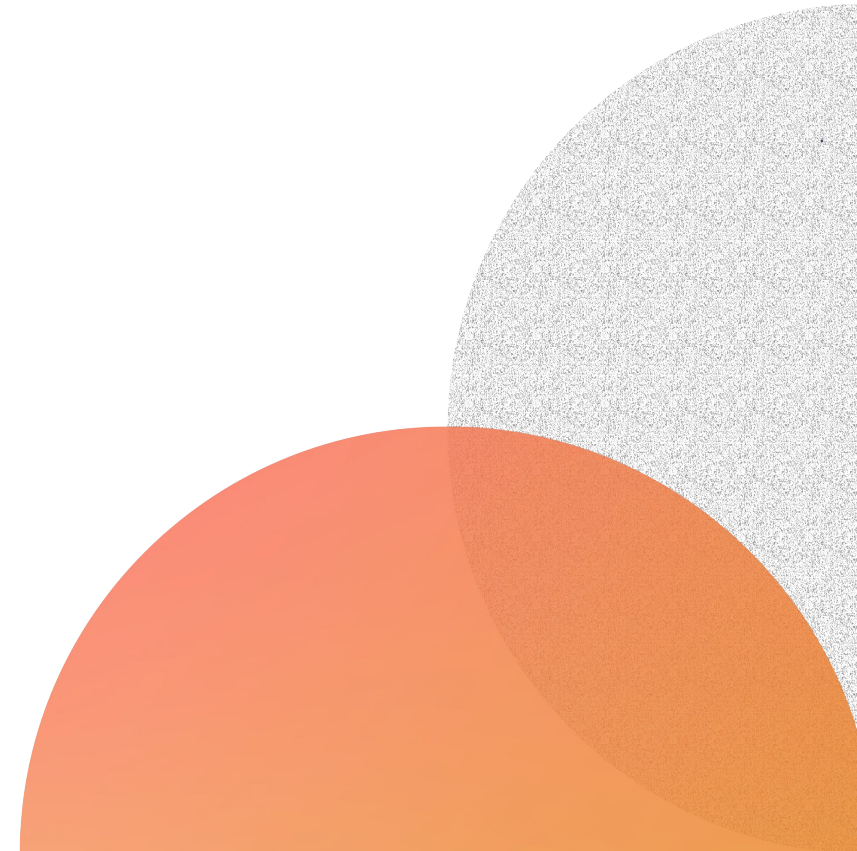
SteelcaseEducation.com

There is deep uncertainty around what the landscape of education will look like in a post-COVID world.

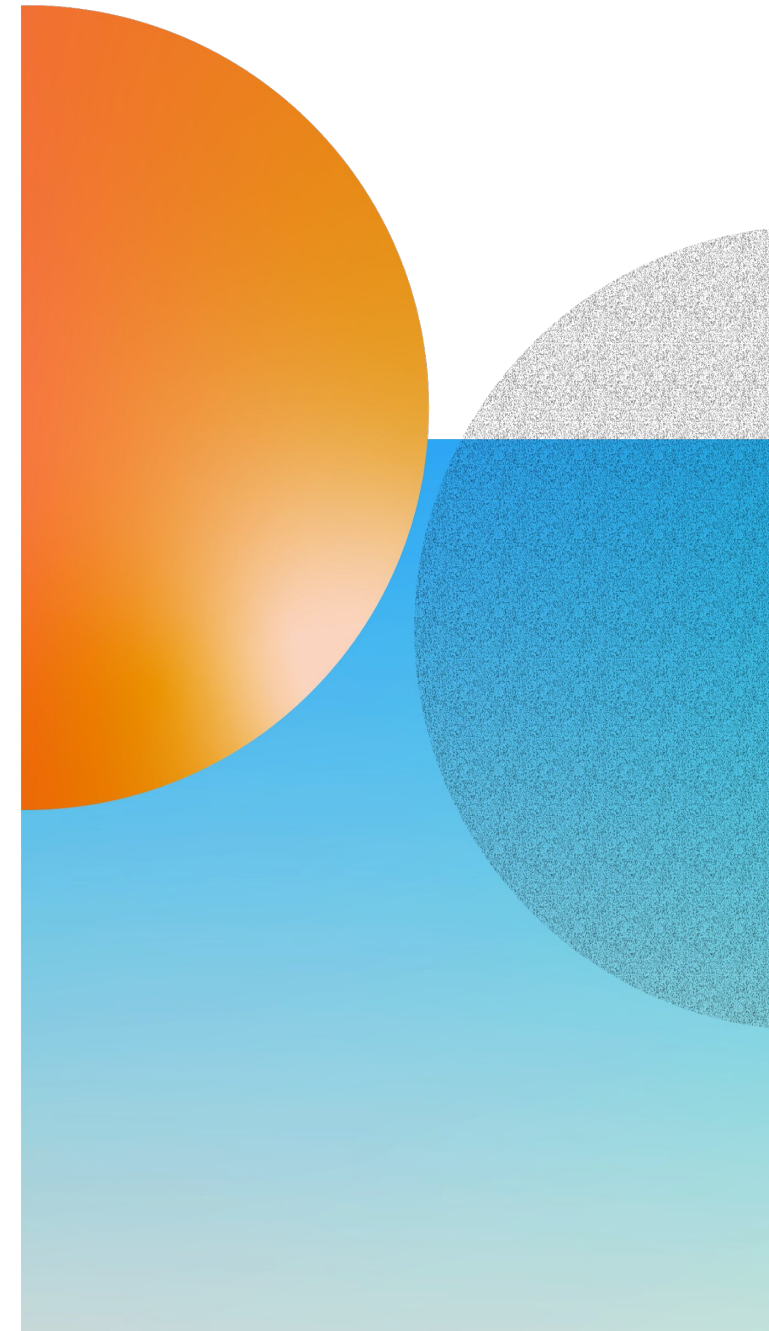
COVID-19 has highlighted the need for new approaches, models and solutions.



Every institution will have to
rethink their capabilities to provide
blended in-person and remote
learning experiences.



The safety and wellbeing of students, educators and administrators must be paramount — people need to be safe and feel safe.



Physical

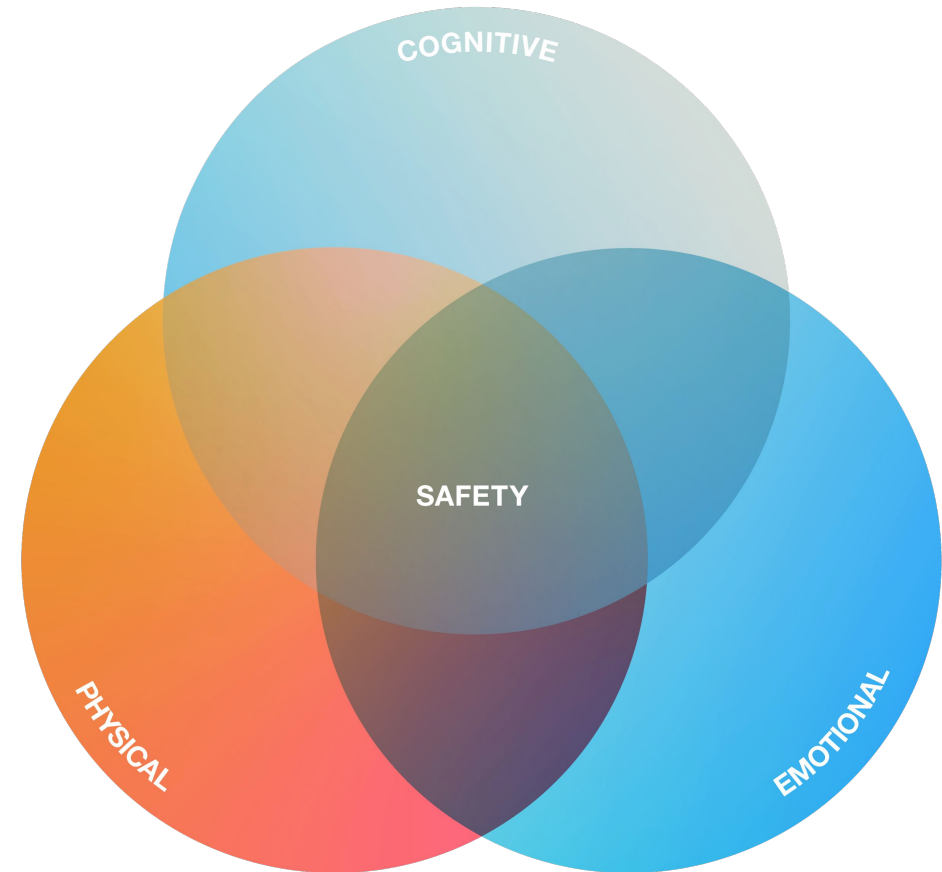
Students and educators can work and learn in places where they are able to stay active, healthy and safe, minimizing exposure to pathogens that cause illness.

Cognitive

People can focus on teaching and learning and not be distracted by fear for their personal safety.

Emotional

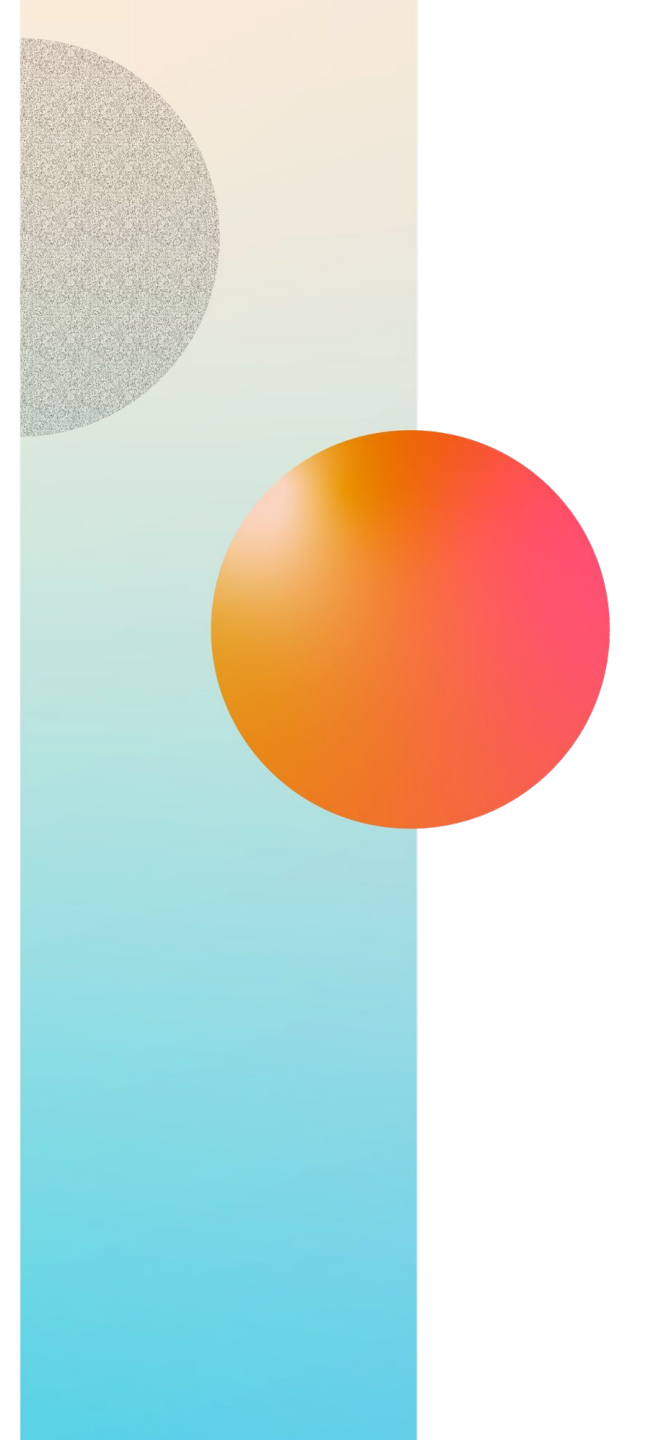
People feel safe, supported and a sense of belonging so learning can thrive



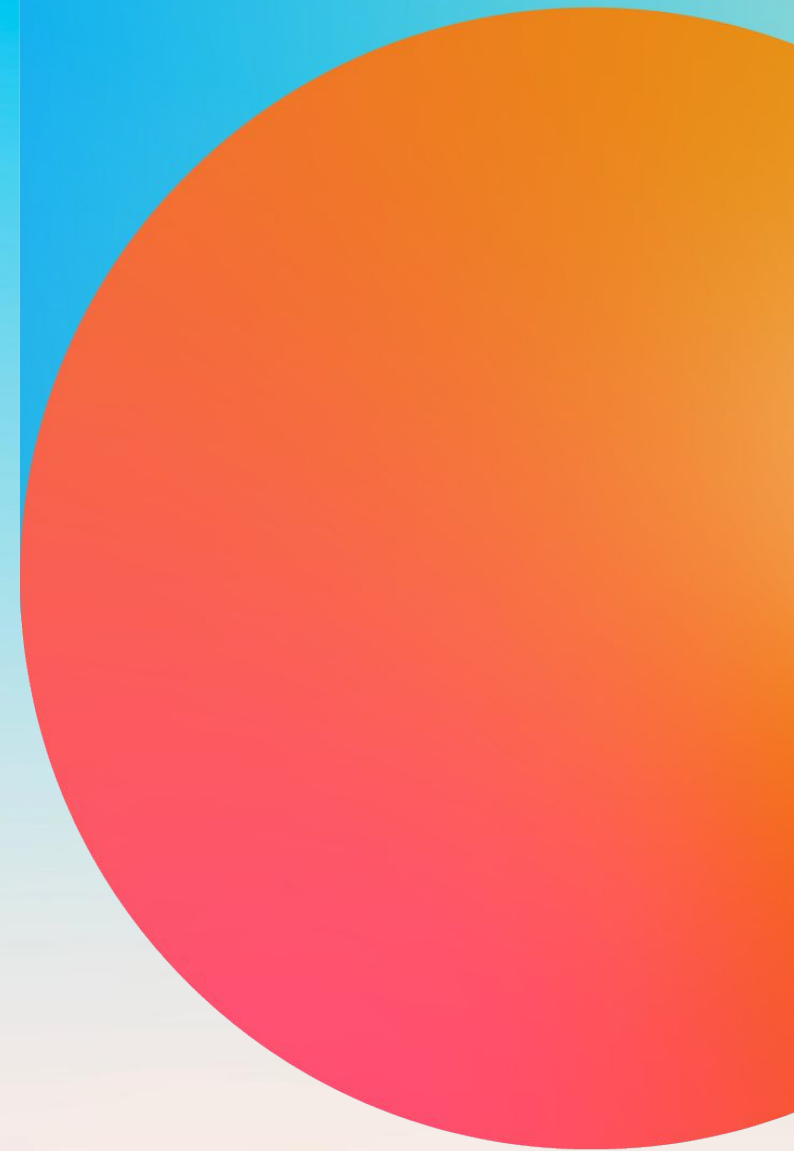
Today's Learning Spaces: Design Challenges

- Reconfigurability
- Common spaces
- High density
- High mobility
- Focus on wellbeing

Pre-COVID learning environments were designed to support active, engaged modes of learning. Many of these attributes can now pose challenges as educational institutions strive to limit physical interactions.



Preparing for the
Now, Near and Far



Now

What we
know now

Retrofit

Near

Science-based
and data-driven

Reconfigure

Far

Science and
Technology

Reinvent

Planning Considerations for the New School Year Ahead

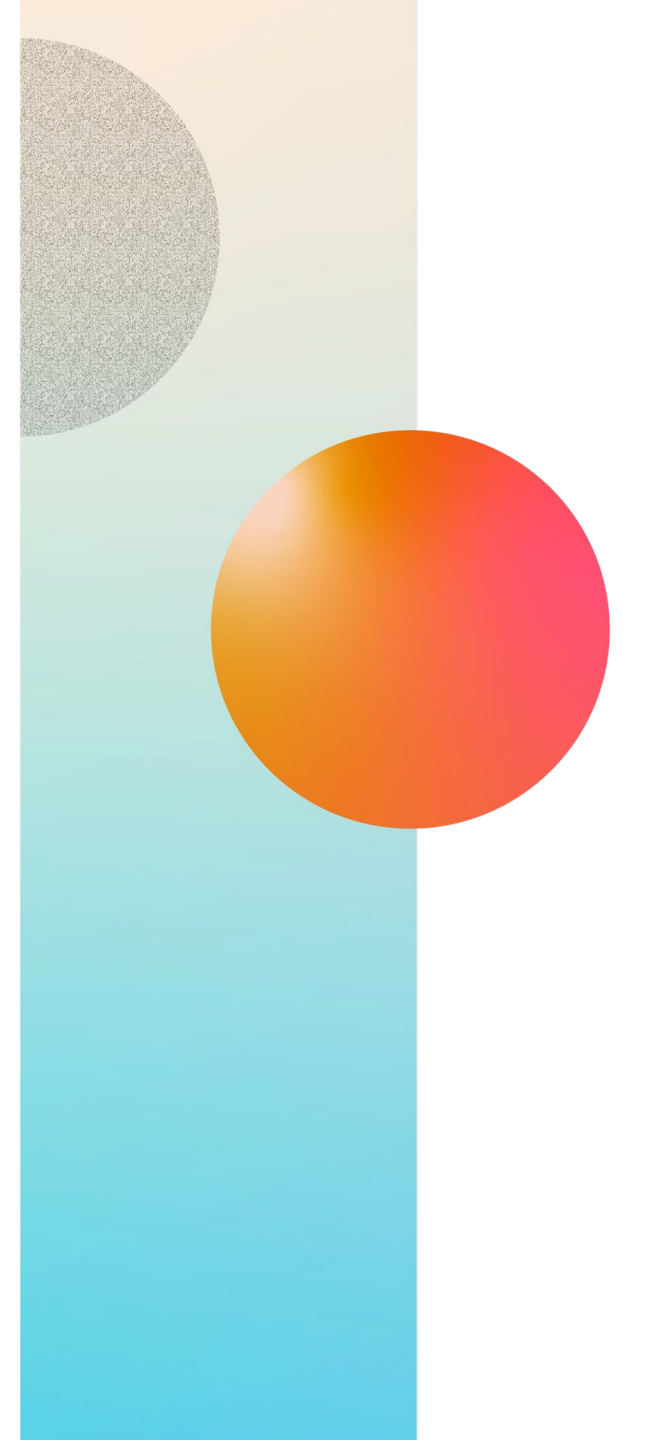
Teaching and Learning Experiences

The following offerings demonstrate how to adapt for post-COVID teaching and learning experiences

Navigating Re-entry Into Our Schools

- Reconfigurability
- Common spaces
- High density
- High mobility
- Focus on wellbeing

Pre-COVID learning environments were designed to support active, engaged modes of learning. Many of these attributes can now pose challenges as educational institutions strive to limit physical interactions.





NOW | REFINE

We facilitate processes through which you uncover, discover and capture your current realities as well as the lessons learned about safety, technology, blended learning and communication. These insights inform current improvements as well as near- term choices.



NEAR | REDEFINE

We provide key expertise on how you can interpret guidance and redefine a return to learning environments with consideration to necessary issues from safety protocols and density reduction to adopting new norms and learner dynamics. We'll help you consider how you'll implement and iterate shifts proactively to manage change.



FAR | TRANSFORM

Beyond adapting to a new normal, we help you envision a compelling future – one that is better for all you've learned through the current crisis. We'll help you transform and reinvent by catalyzing your new thinking, inspiring possibilities and establishing a path to shift to a powerfully positive learning experience while continuously improving it going forward.

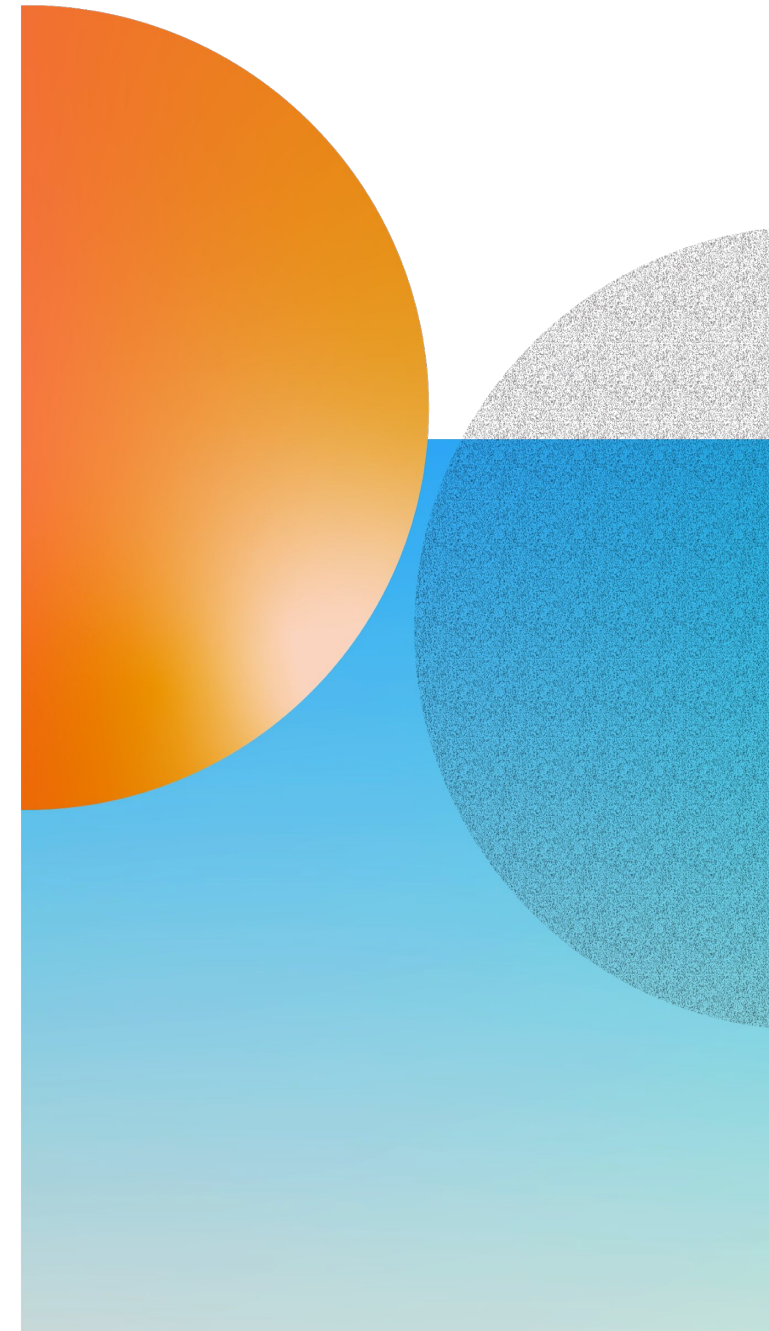
Four Key Considerations

Density: the number of people per sq. ft/m

Geometry: how the furniture is arranged

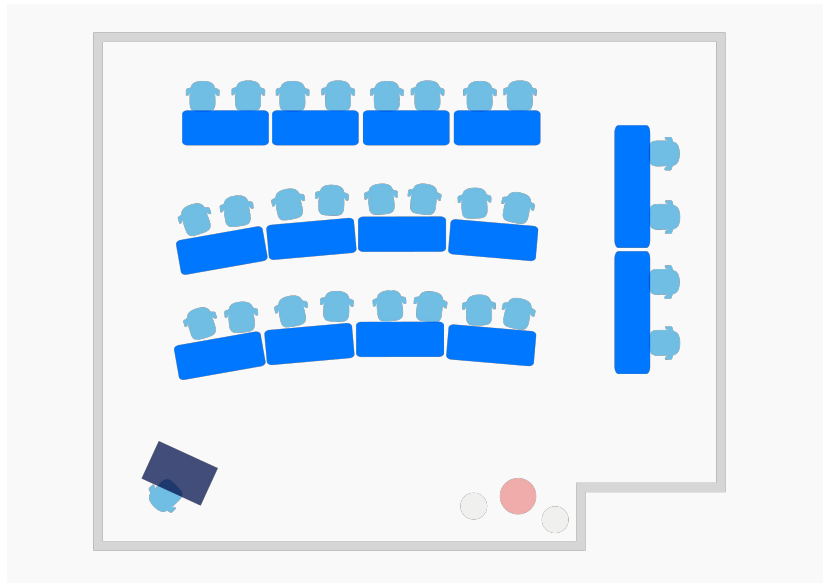
Division: adding screens, panels or barriers

Technology: assessing current tools

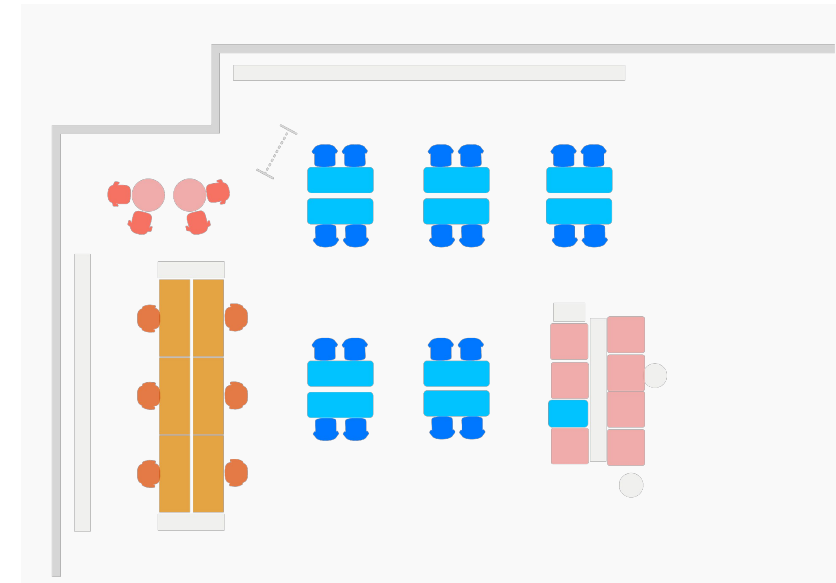


The Design Challenge

Classrooms



In-between and Shared Spaces



Our Commitment

We know that educator, student, staff and organizational needs are going to evolve as people return to schools and campuses. We will continue to work closely with our global network of leading organizations and experts and share our observations and insights with all of you.

Our commitment to you is to share as quickly as we learn: [SteelcaseEducation.com](https://steelcaseeducation.com)

If you require assistance in planning your roadmap for the 2020-2021 school year, feel free to contact me directly at msergnes@steelcase.com

